

WISTERIA

Imagine coming home to a world so peaceful, so perfect, it seems tailor-made especially for you. Imagine a canvas painted with your favorite colors and textures, brilliant blue days, star-filled evenings, and mountain peaks lining a nearby horizon. And imagine unparalleled comfort and style, complemented by your own personal touch.

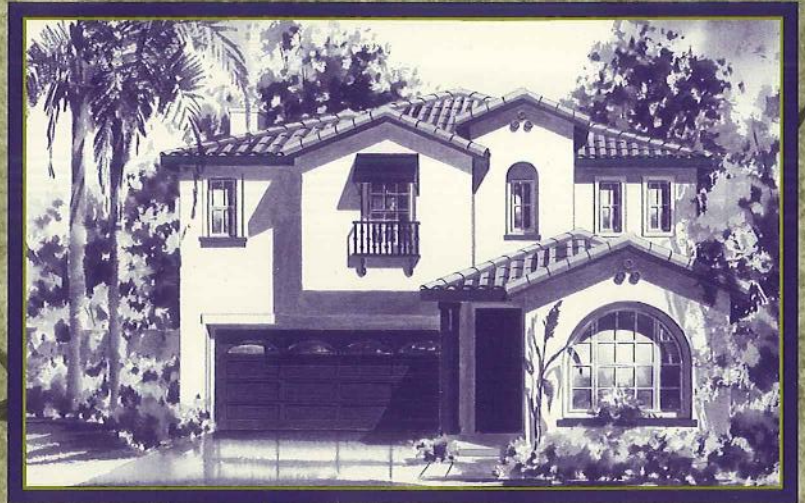
Introducing Wisteria, a unique collection of homes priced from the mid \$200,000s. Wisteria offers elegant family living in 2,150 to 2,412 square feet, and classic, inspired architecture. With two community parks and a pool and spa, all gated to ensure privacy, along with breathtaking views of the Santa Clarita mountains, Wisteria is the community you just might create for yourself.

Realize the home
of your dreams.
Welcome to Wisteria.

Residence One

Model Elevation

1A



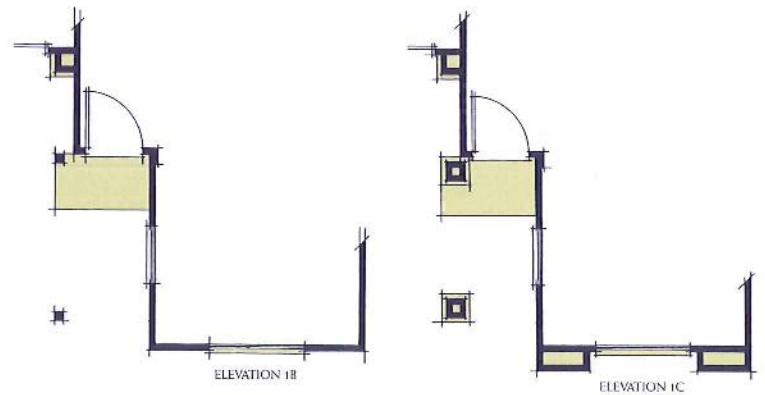
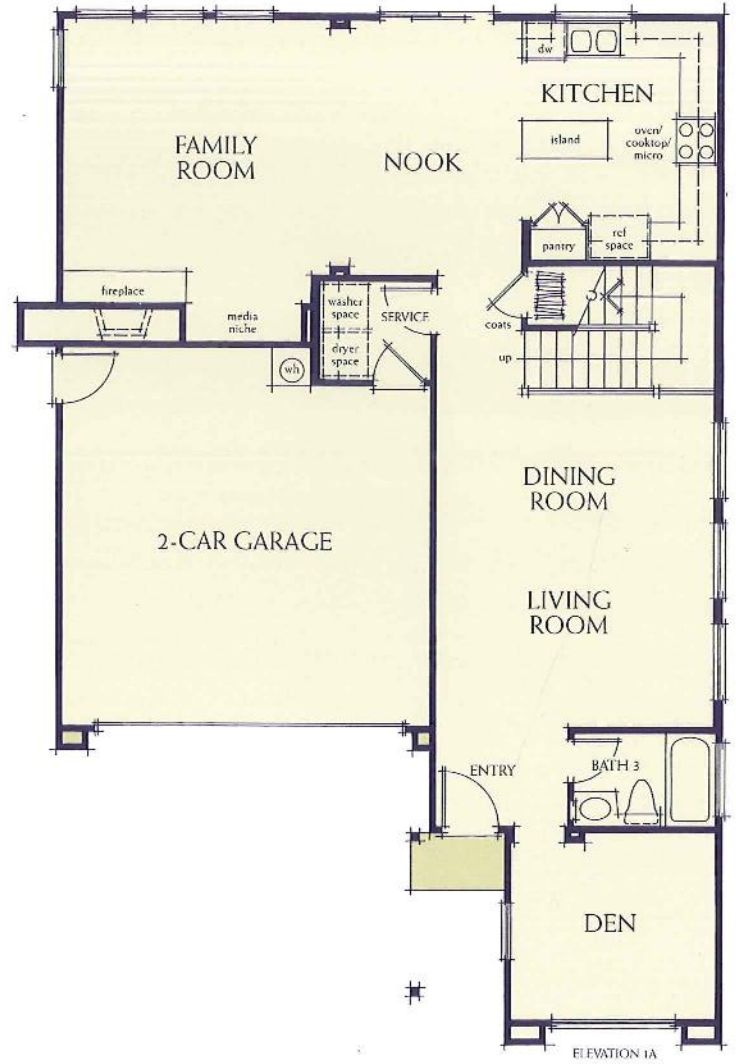
1BR



1C



2nd Floor

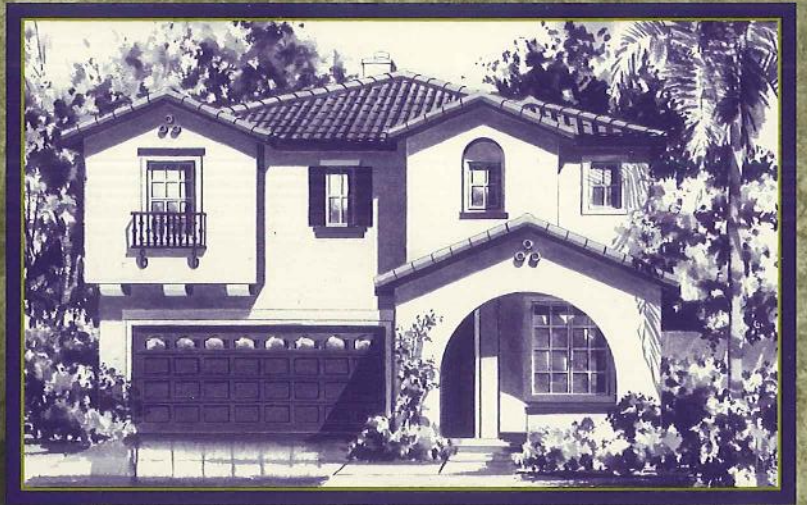


- 2,150 square feet
- 4 bedrooms • 3 baths
- Optional master retreat
- Formal living room • Formal dining room
- Gourmet kitchen with island • Breakfast nook
- Attached two-car garage

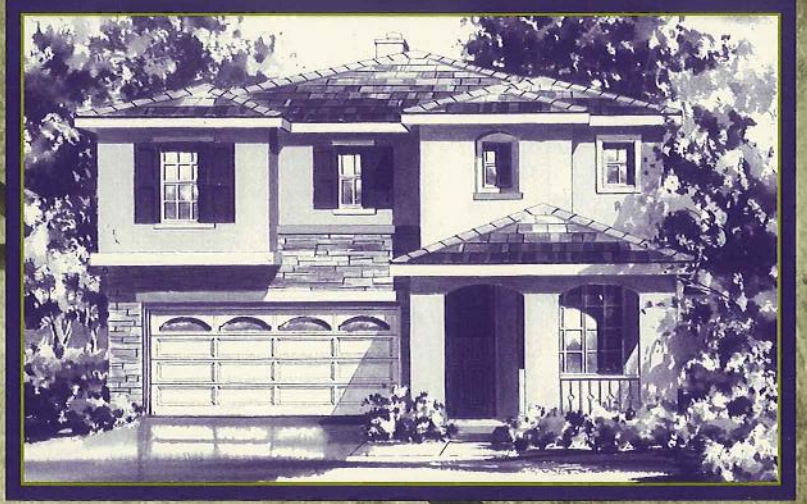
1st Floor

Residence Two

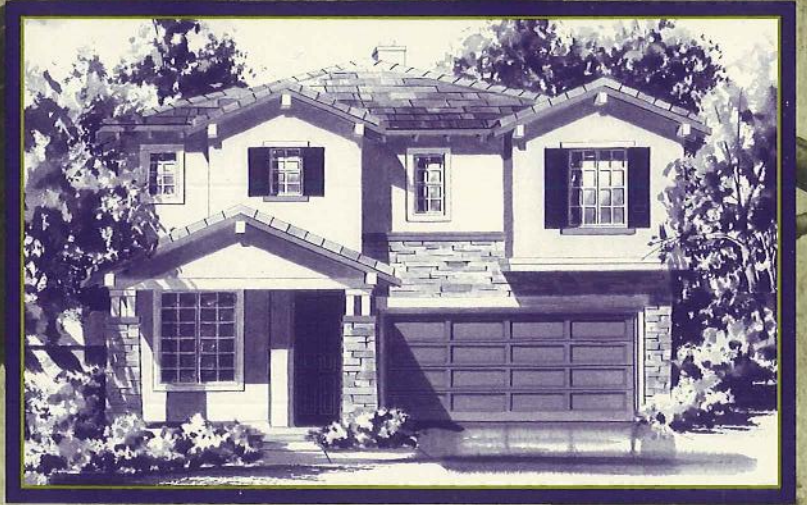
2A



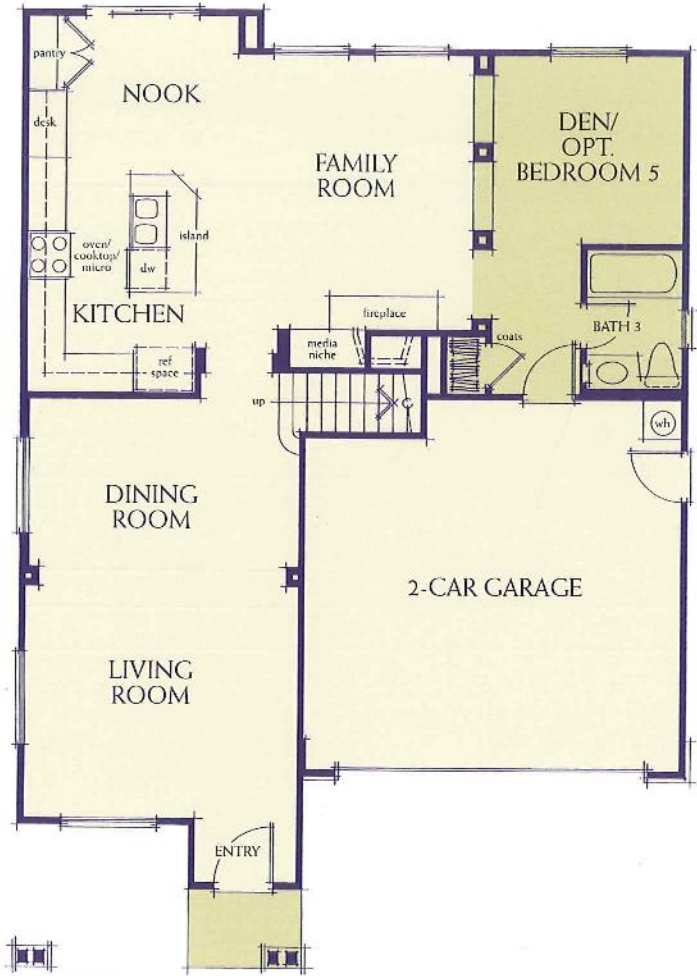
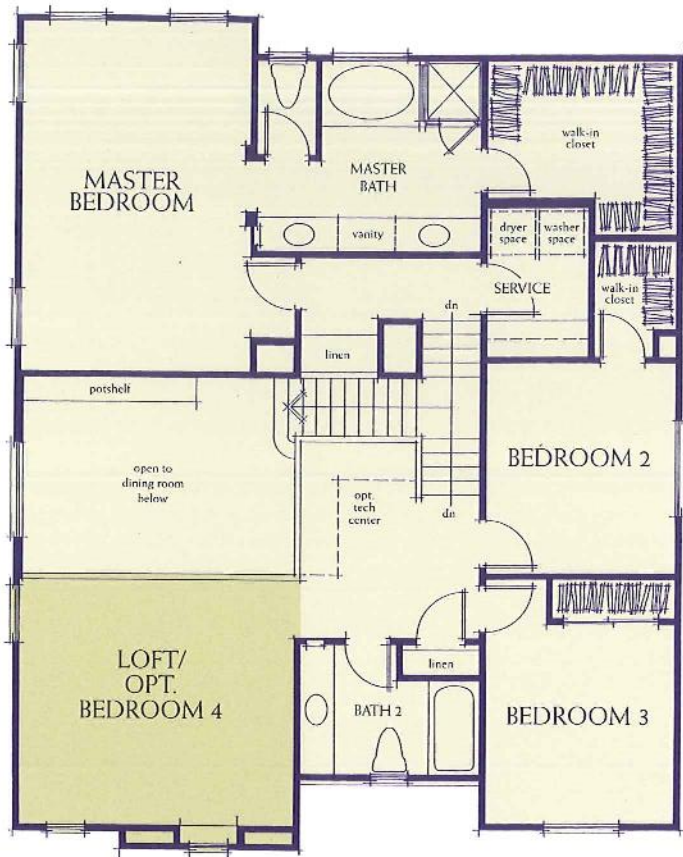
2B



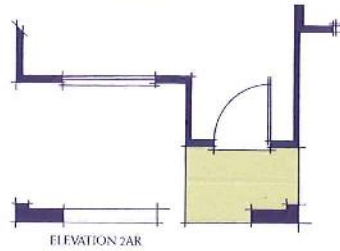
Model Elevation
2CR



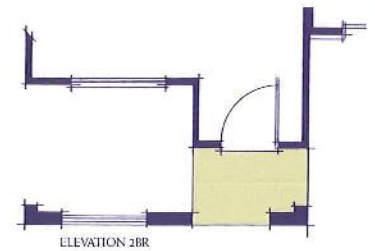
2nd Floor



ELEVATION 2CR



ELEVATION 2AR



ELEVATION 2BR

2,252 square feet
 3 bedrooms • 3 baths
 Optional bedroom 4 • Optional bedroom 5 with shower
 Loft and den • Formal living room • Formal dining room
 Gourmet kitchen with island • Breakfast nook
 Attached two-car garage

1st Floor

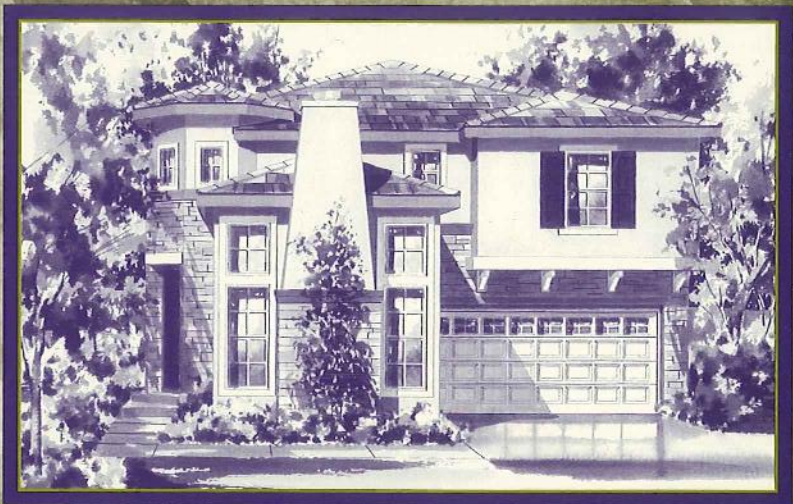
Residence Three

3A



Model Elevation

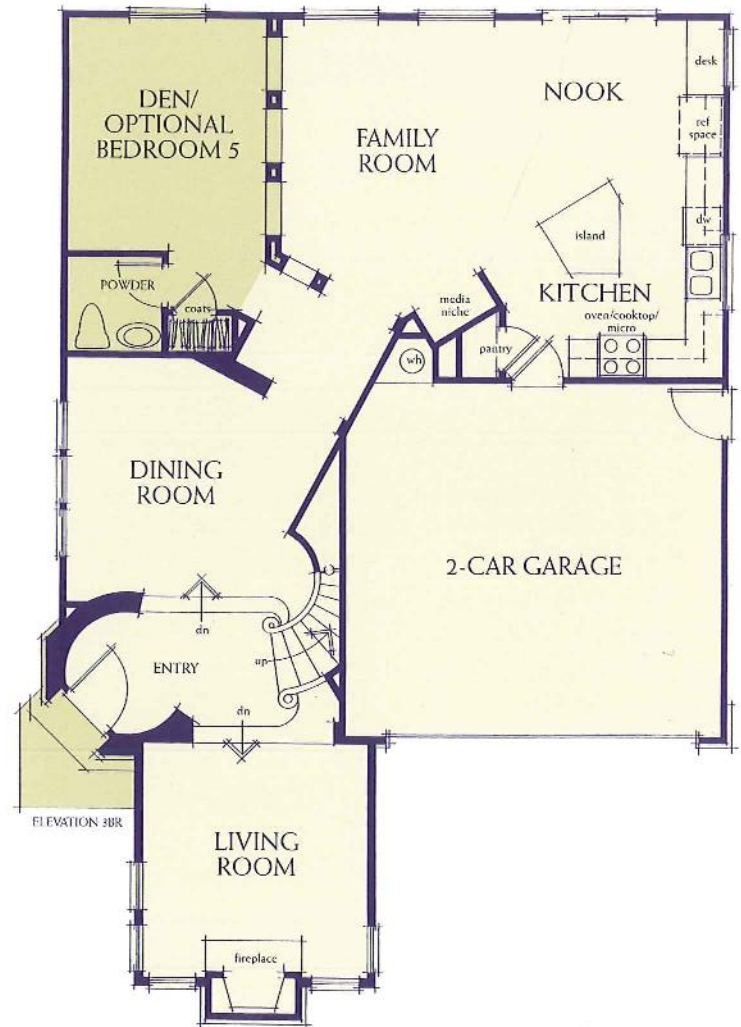
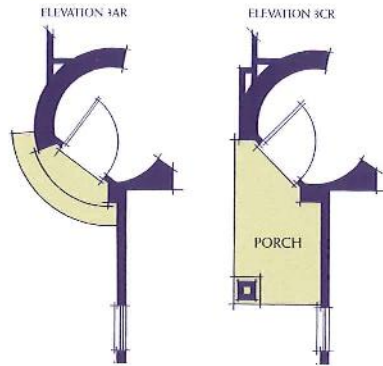
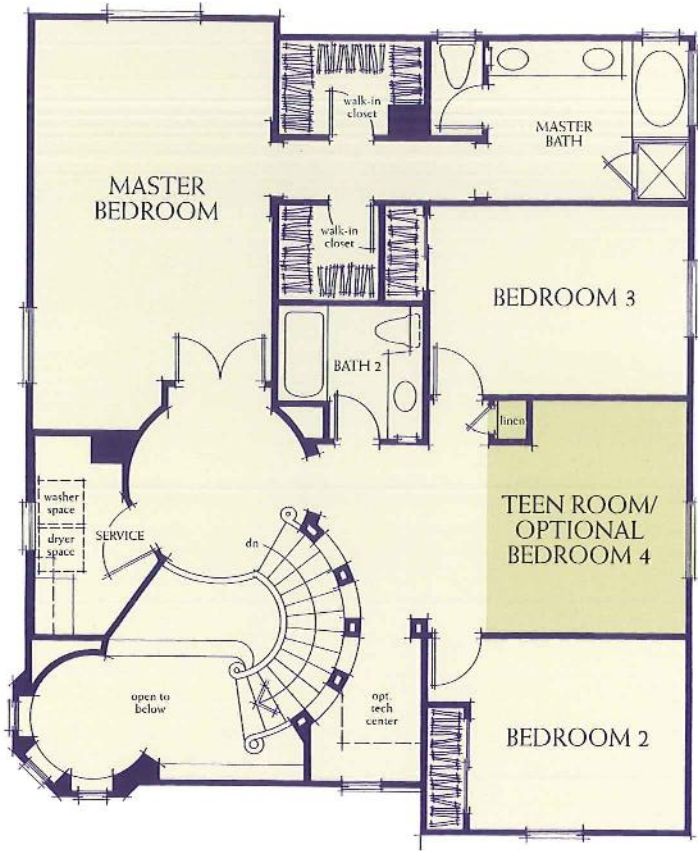
3BR



3C



2nd Floor



2,412 square feet

3 bedrooms • 2½ baths • Den and teen room

Optional bedroom 4 • Optional bedroom 5 with tub

Formal living room • Formal dining room

Gourmet kitchen with island • Breakfast nook

Attached two-car garage

1st Floor

Elegant Features

Distinguished Exteriors

- Two private, community parks with tot lot and half-basketball court
- Private, community pool and spa
- Spanish Traditional, Italian Country, and French Country architectural styles with designer-selected color palettes
- Stone masonry accents with shutters and wrought-iron details (per plan)
- Fire-retardant, concrete tile roofs
- Raised-panel entry doors with polished-brass hardware
- Attached two-car garage with sectional, roll-up garage door
- Automatic garage door opener with two transmitters
- Designer garage door windows (per plan)
- Rear and side-yard wood and/or wrought-iron fencing with a gate (per lot)
- Concrete driveways and walkways
- Weatherproof electrical outlet at front and rear of home
- Plumbed at rear yard for gas barbecue
- Front-yard landscaping with automatic irrigation systems

Gracious Interiors

- Spacious family rooms with media niche
- Family room gas fireplaces with ceramic tile surrounds (per plan)
- Stain-grade handrail
- Raised panel Colonist® interior doors with polished brass hardware
- Architecturally designed, radius corners on outside interior walls
- Decora® light switches
- Architecturally designed, recessed lighting
- Interior laundry
- Pre-wired for Category 5 telephone voice network in kitchen, den, loft and all bedrooms
- Pre-wired for cable television in family room, den, loft and all bedrooms
- Cultured marble countertops in secondary bathrooms and laundries
- Polished-chrome fixtures in guest bathrooms
- Central air conditioning
- Gas, forced-air heating system with programmable night set-back

Gourmet Kitchens

- Hand-set, 6" x 6" ceramic tile countertops
- Convenient center islands
- GE® appliance package including:
 - Five-cycle dishwasher
 - 30" self-cleaning oven
 - 30" porcelain cooktop with sealed burners
 - Microwave hood combination
- Custom oak cabinets featuring self-closing semi-concealed hinges, white interiors and adjustable shelving in the pantries
- Under-cabinet fluorescent lighting
- Deluxe, dual compartment sinks
- White-on-white pull-out sprays
- Refrigerator area plumbed for icemaker

The Master Suites

- Hand-set ceramic tile countertops
- Dual vanity areas with oversized mirrors
- Polished-chrome faucets with levers
- Clear-glass enclosed showers with polished-chrome frames
- Oval soaking tubs
- Private water closets with elongated bowls
- Spacious walk-in closets

Special Features and Energy-Savers

- Dual-glazed aluminum windows
- Post-tension foundation systems
- Gas laundry connections
- Energy-efficient hot water heaters
- Energy-efficient exterior door weather-stripping
- Energy-saving fiberglass insulation in ceiling and walls

Custom Design Options

- A full array of design opportunities and upgraded specifications are available to help you customize your Wisteria home to suit your every need. Please consult your sales representative for additional information.

In an effort to improve our product to meet consumer needs, Western Pacific Housing reserves the right to modify features, specifications, plans, and pricing without notice and/or obligation. All square footage is approximate. Not all features are available in all plans. Entry, ceiling, window, and wall configurations vary per plan and elevation. All renderings are artist's illustrations. See Sales Representatives for details. ©1999 Western Pacific Housing, Inc.

Western Pacific Housing

We Make It Happen

Being the homebuilder you want us to be isn't easy. It takes hard work, dedication, and experience. But none of these things alone makes a builder great.

It is caring.

Caring about you, your future, your total satisfaction as a Western Pacific Housing homeowner. Everything we do, from testing faucets to location scouting, is because we care.

It is knowledge.

Our principals come together with countless years of experience, forming a hub of homebuilding excellence that now stretches the width and breadth of California.

It is strength.

We believe that if you stop pushing yourself to be better, you stop growing. We have earned a reputation throughout California for quality and unbeatable value for everyone from first-time buyers to luxury homeseekers — but we'll never rest on those accomplishments alone.

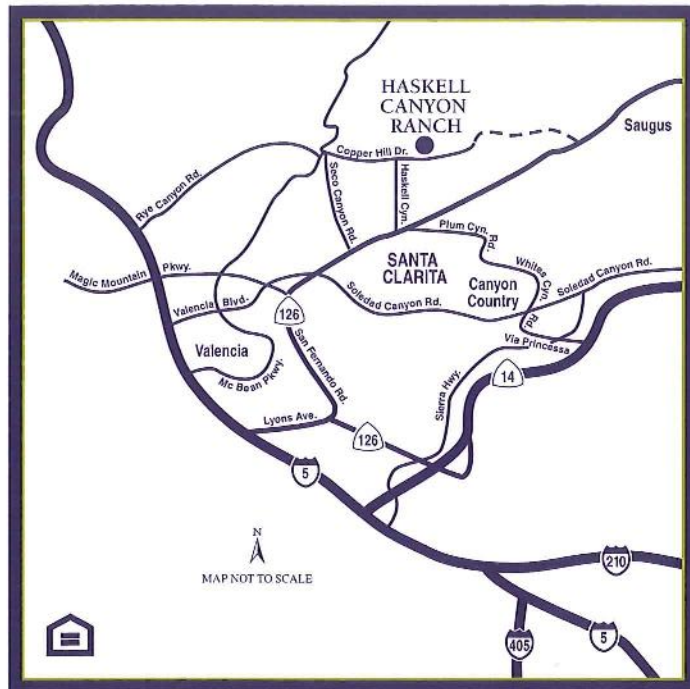
It is teamwork.

At Western Pacific, we don't just work for you, we work with you. You tell us what you want, and we really hear you. Our commitment to you is the backbone of our mission, and, we believe, the No. 1 indicator of our continued growth and success. Because your continued happiness is the truest measure of our success.

Western Pacific Housing. We make it happen.

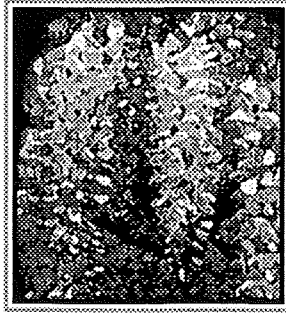


(310) 665-3700
westernpacifichousing.com



WISTERIA at Haskell Canyon Ranch
28415 Silverking Trail, Santa Clarita, CA 91350
661.263.9289
westernpacifichousing.com





WISTERIA

A Western Pacific Housing Community

Residence One

2,150 square feet • Four bedrooms • Optional master retreat • Three baths
Formal living room • Formal dining room • Gourmet kitchen with island
Breakfast nook • Attached two-car garage

\$ 265,990-

Residence Two

2,252 square feet • Three bedrooms • Loft • Den • Optional bedroom 4
Optional bedroom 5 with shower • Three baths • Formal living room • Formal dining room
Gourmet kitchen with island • Breakfast nook • Attached two-car garage

\$ 272,990-

Residence Three

2,412 square feet • Three bedrooms • Den • Teen room • Optional bedroom 4
Optional bedroom 5 with shower • Two and one-half baths • Formal living room
Formal dining room • Gourmet kitchen with island • Breakfast nook
Attached two-car garage

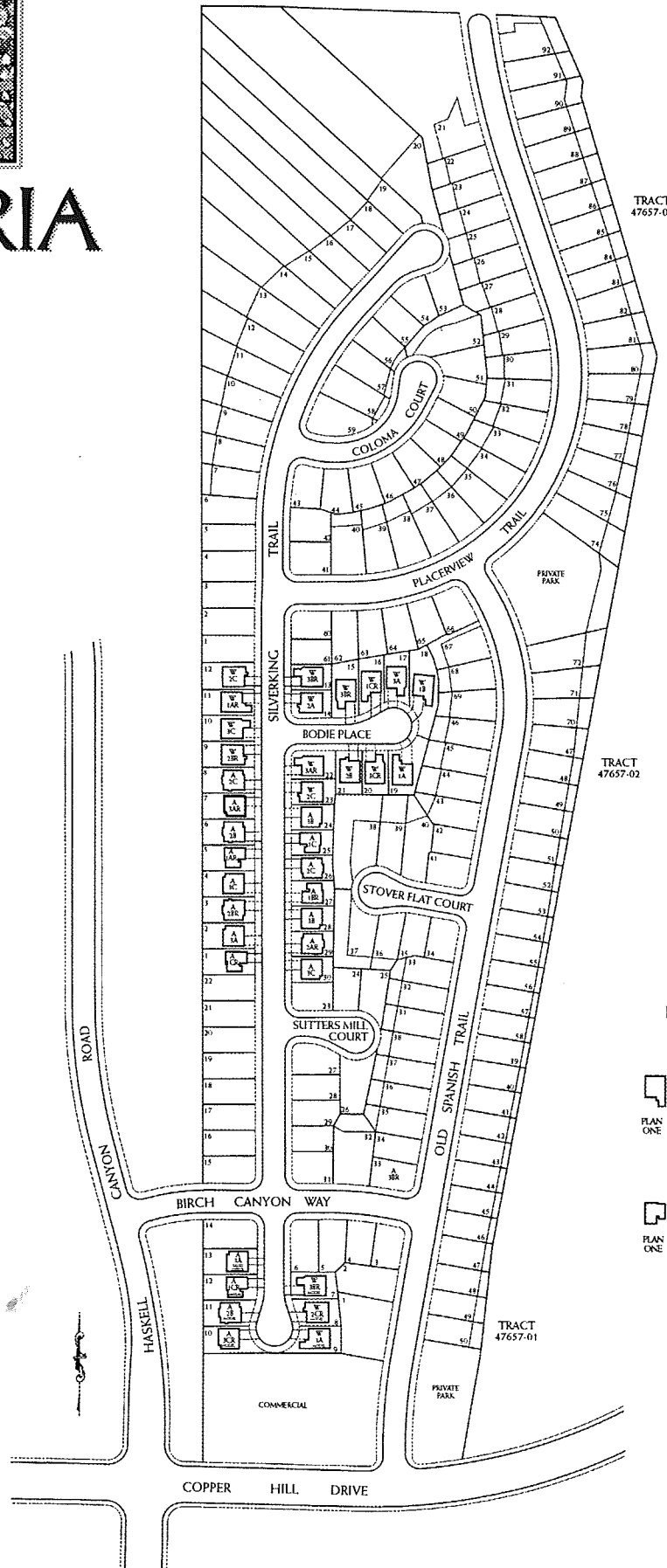
\$ 279,990-

28415 Silverking Trail, Santa Clarita, CA 91350 • (661) 263-9289 • Fax: (661) 263-7319
westernpacifichousing.com





WISTERIA



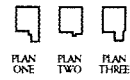
TRACT
47657-04

TRACT
47657-02

TRACT
47657-01

LEGEND

WISTERIA



ACACIA

