

TIMBERLINE



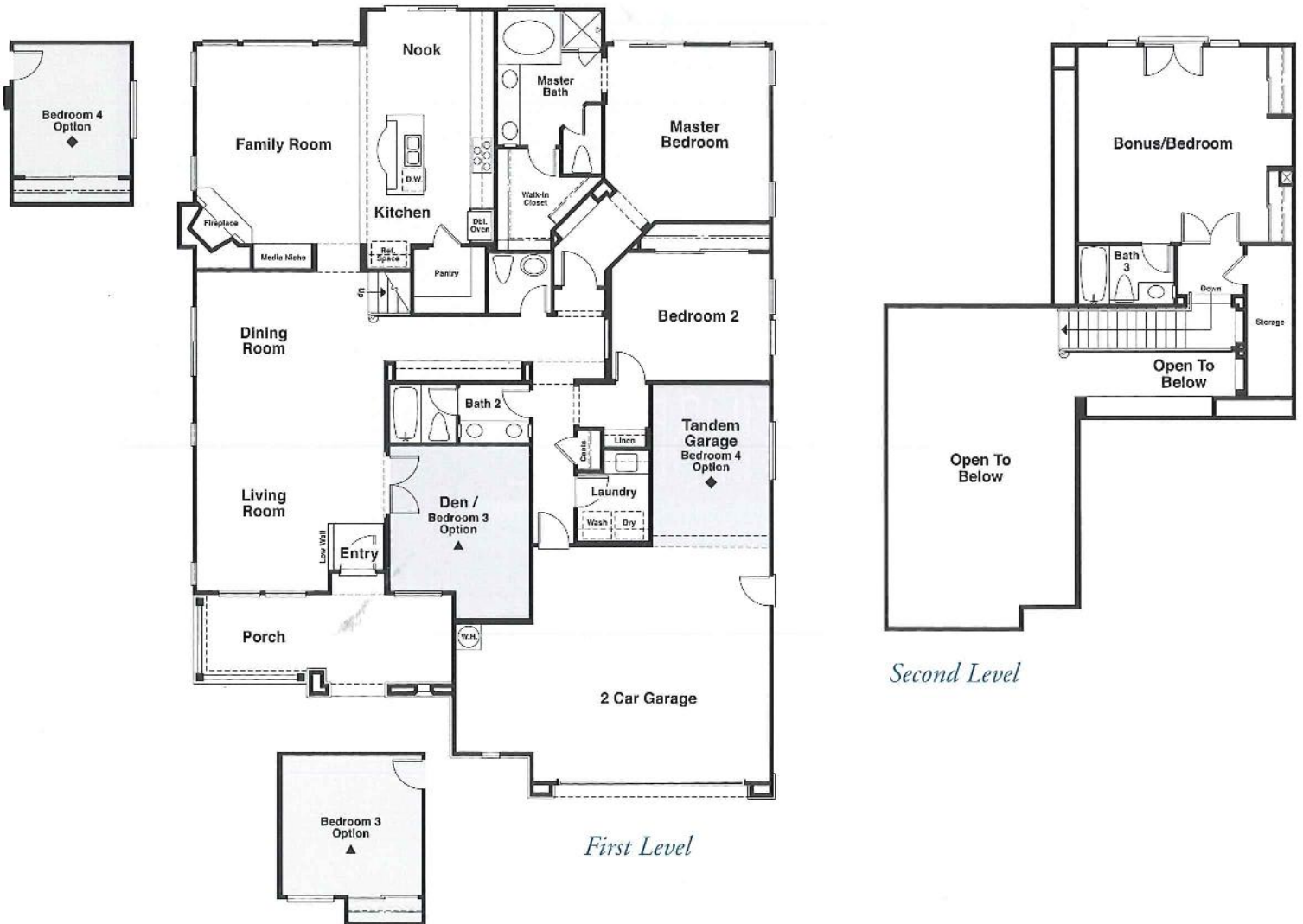
AT PACIFIC CREST

Residence One

- Approximately 2,671 Square Feet
- Two Story
- Three Bedrooms plus Bonus/Bedroom
- Three Baths plus Powder Room
- Family Room
- Formal Dining Room
- Large Kitchen with Nook
- Porch
- Two Car plus Tandem Garage



One A



Floor plans and renderings are preliminary. Window locations and sizes may vary per elevation.

Residence Two

- Approximately 3,019 Square Feet
- Two Story
- Five Bedrooms
- Three Baths
- Formal Dining Room
- Large Family Room
- Kitchen with Nook
- Study/Retreat Area
- Two Car plus Tandem Garage



Two C



Floor plans and renderings are preliminary. Window locations and sizes may vary per elevation.

Residence Three

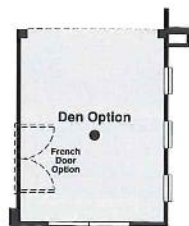
- Approximately 3,162 Square Feet
- Two Story
- Five Bedrooms
- Three Baths
- Formal Living Room
- Large Kitchen with Nook
- Retreat Area
- Porch
- Two Car plus Tandem Garage



Three C



First Level



Second Level

Pacific Bay Homes



There are two things in life that are for keeps. Your family and your home. The better your home is built, the more your family can depend on it. And you can be assured of quality when your home is built by Pacific Bay Homes, LLC. The company is responsible for some of the finest residential communities in the country, from California to New York. Pacific Bay Homes now has four rapidly growing divisions in California and ranks among the top homebuilders in the state.



Our goal? Build each home to be as special as the priceless memories born there. The building blocks? Quality design, engineering, materials and craftsmanship all working together to complement each other.

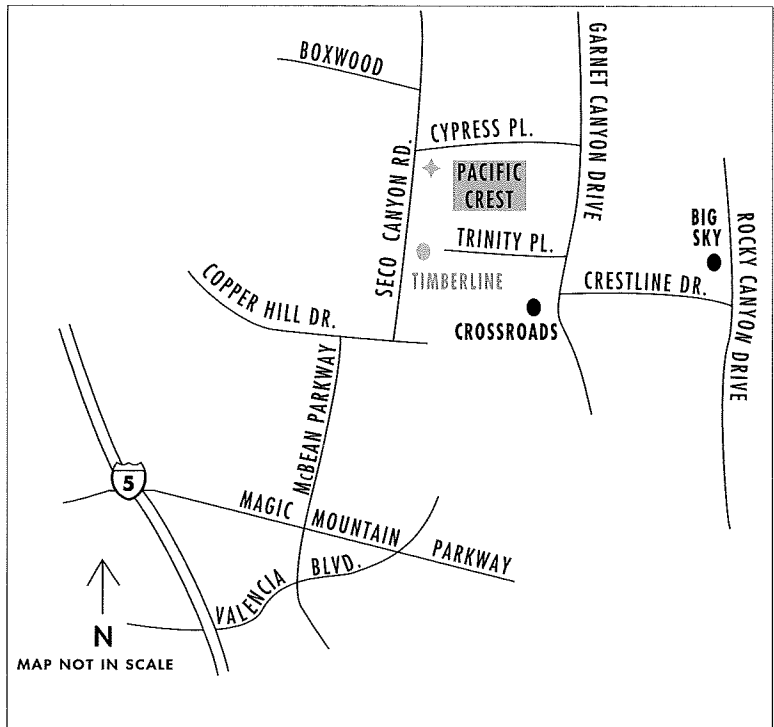
A home built by Pacific Bay Homes begins with a design created by one of a select group of leading architectural firms. They work hand in hand with our construction engineers to create and guide the quality construction of your home. Pacific Bay Homes only uses building materials that meet or exceed industry standards in constructing your home. Each part of your home is built nail-by-nail, board-by-board, pipe-by-pipe by experienced contractors to meet our strict standards.

Our dedication to customer satisfaction is likewise unparalleled, as evidenced by the fact that Pacific Bay Homes was named Best Home Builder in California by National Survey Systems. In this survey of over 12,000 new home buyers, Pacific Bay Homes earned the coveted Home Buyers Choice award, ranking Pacific Bay Homes number one in quality of construction, customer service and overall buyer satisfaction among 32 major California builders.



In all, Pacific Bay Homes designs and builds each house to meet the standards of the most demanding authority of all: the family that calls it home.





TIMBERLINE

22270 Cypress Place

Saugus, CA 91350

661-296-7966 8832

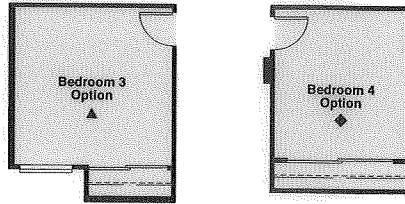
www.pacbay.com

TIMBERLINE

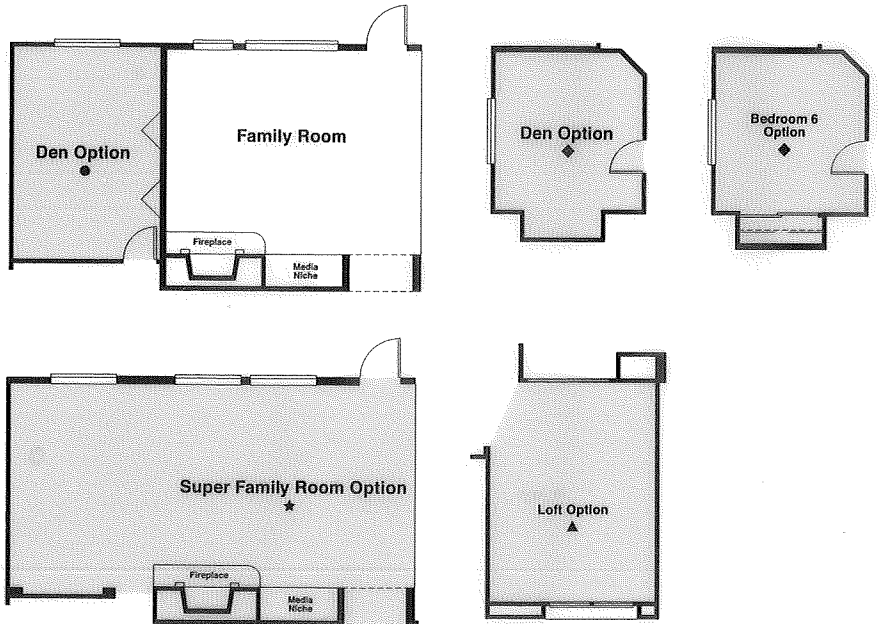
Available Options:

Line up symbol (●,◆,▲,★) with corresponding symbol on original floor plan for option review.

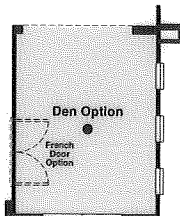
Residence One

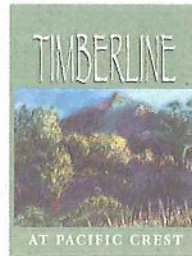


Residence Two



Residence Three





Residence One

Approximately 2,671 Square Feet

Two Story

Three Bedrooms plus Bonus/Bedroom

Three Baths plus Powder Room

Priced from \$324,990 to \$354,990

Residence Two

Approximately 3,019 Square Feet

Two Story

Five Bedrooms

Three Baths

Priced from \$337,990 to \$389,990

Residence Three

Approximately 3,162 Square Feet

Two Story

Five Bedrooms

Three Baths

Priced from \$344,990 to \$396,990

Amenities



Distinctive Architectural Features

- Exciting exterior designs featuring Hardiplank, textured siding, stucco with brick or ledge stone accents
- Integral color concrete tile roofs which are fire resistant, low maintenance and architecturally pleasing
- Lighted address numbers
- Exterior gas service at rear of home for future barbecue
- Convenient indoor laundry room with cultured marble countertops, service sink and cabinets
- Radiused interior drywall corners
- Fiberglass Therma-Tru designer-raised panel front entry doors with Titan solid brass "Chelsea" lockset and deadbolt
- Raised six-panel interior passage doors with Kwikset "Copa" knobs
- Hand-crafted maple stair system with end treads
- Powder-coated white, ventilated closet shelving
- Pre-wired systems:
 - Telephone and cable television included in all bedrooms, as well as standard locations
 - Home Security
 - Ceiling fan outlets in family room and master bedroom
 - Home is wired (Category 5) for advanced computer networking and multi-function phone systems
- Complete side-and rear-yard masonry walls and/or tubular steel fencing per lot plan
- Three car garages available (configurations and availability options vary per plan), with insulated steel sectional roll-up garage doors with opener and two transmitters

Gourmet Kitchen

- Built-in Whirlpool quality appliances (white), including:
 - Five-burner sealed-gas cooktop range

- Thirty-inch double, self-cleaning "AccuBake" system and self-cleaning upper oven with "EZ-Touch" controls
- Deluxe five-cycle dishwasher
- Combination microwave oven/hood (except plan 2, built-in)
- Hand-set 6" x 6" ceramic tile countertops with full splash at cooktop
- Built-in desk (plan 3)
- Hand-crafted alder cabinetry with concealed hinges
- Refrigerator area plumbed for ice maker/water service
- Walk-in pantry (plan 1)
- Butler's pantry (plan 3)
- Under cabinet task lighting
- Price Pfister faucet fixture with pull-out spray head
- Recessed ceiling downlighting



Comfortable Living Areas

- Inviting forty-two inch wood burning fireplace with stone or brick face and hearth (per plan) and painted wood mantel
- Media niches
- Dramatic cathedral, vaulted or coffered ceilings (per plan)
- Elegant hand-set ceramic tile entries, vinyl flooring in kitchen, laundry and secondary bath areas
- Smoke detectors with warning alarm
- Recessed ceiling lights with bulbs
- "Decora" silent electrical switches

Private Master Suites

- Hand-crafted alder cabinetry with concealed hinges
- Oval tub with separate shower and clear enclosure with ceramic tile surrounds
- Private compartmentalized water closet
- Ceramic tile Pullman tops with dual sinks
- Spacious walk-in closets



- Elegant Price Pfister chrome wide-spread faucets
- Full-length mirrored wardrobe doors
- Dual-glazed windows
- Programmable digital thermostat
- Energy-efficient fifty-gallon water heater
- Plumbed for gas dryer service
- Single-lever water shut off at washer
- Mirrored wardrobe doors in secondary bedrooms
- Energy-efficient heating and air conditioning
- Fiberglass batt insulation exterior walls and attic/roof areas
- Acrylic tubs in secondary bathrooms
- Stained linen cabinets

Builder Option Selection Summary

Pacific Bay Homes also offers a variety of option selections that allow you to further personalize your new home (availability subject to production status). Some of which are summarized as follows:

- Alternate finishes and colors for the appliance package
- Kitchen countertop materials and full-height splash, granite and selected tile colors available
- Cabinet selections in maple and white
- Convection upper oven
- Additional electrical outlets
- Master bath countertop and surrounds designer selected tile and trim colors
- Den, flex room and super family room structural alternates (per plan)
- Sectional garage door with windows

Please see your sales counselor for complete information regarding the option program.

