



AT PACIFIC CREST

PRELIMINARY

Natural. Beautiful. Magnificent.

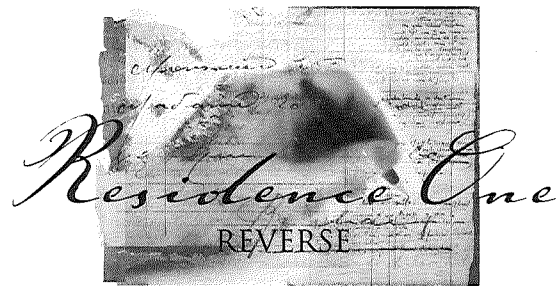


Located in the northernmost area of the Santa Clarita Valley, Saugus is known for its beautiful canyons, natural beauty and now is home to the magnificent new Greystone community of Tapestry at Pacific Crest.

Careful attention has been paid to every detail in each Tapestry home to ensure you will love living here. Starting with the beautiful architecture and lovely front yard landscaping to the elegant interiors. Stylish art niches allow treasured art and keepsakes to be elegantly displayed. The wood-burning fireplace provides a cozy atmosphere for quiet evenings at home. An inviting master suite serves as your own personal sanctuary with a large walk-in closet and luxurious jetted oval soaking tub. Plus each home is wired with the latest technology for the twenty-first century. Every element of each home is designed for your comfort and happiness.

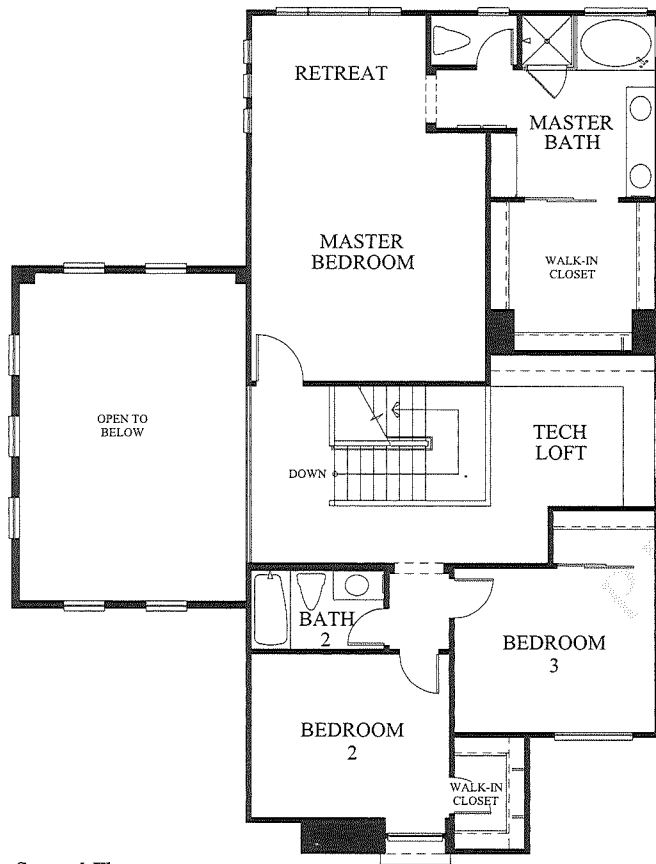
Tapestry at Pacific Crest. Created especially for you and your family.

PRELIMINARY

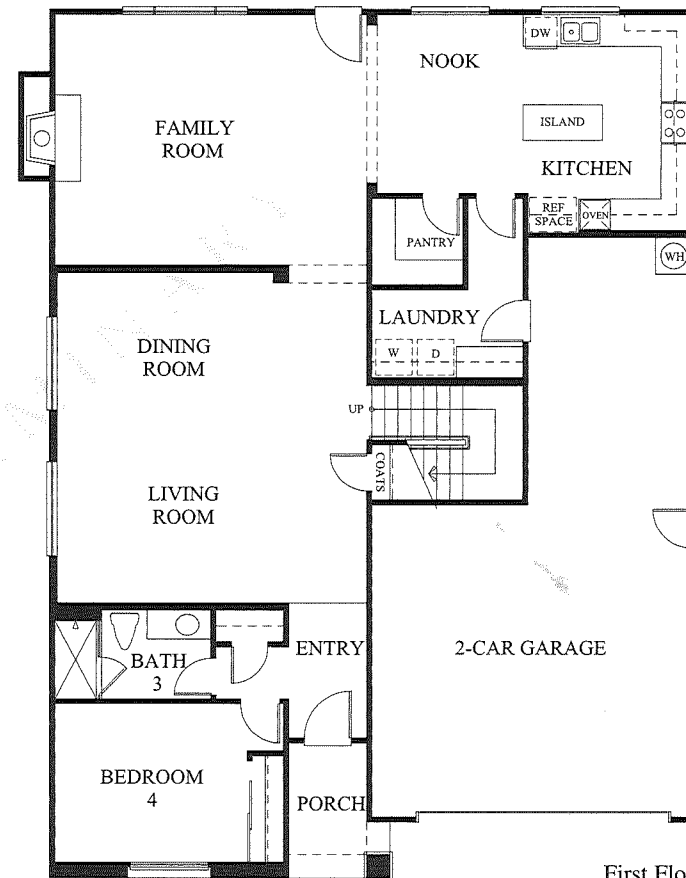


4 BEDROOMS 3 BATHROOMS 2,825 SQUARE FEET

Every member of the family will have their own space in this generous floor plan with an upstairs tech loft and first floor bedroom. The family room brings everyone together for quality time while basking in the warm glow of the wood burning fireplace.



Second Floor



First Floor



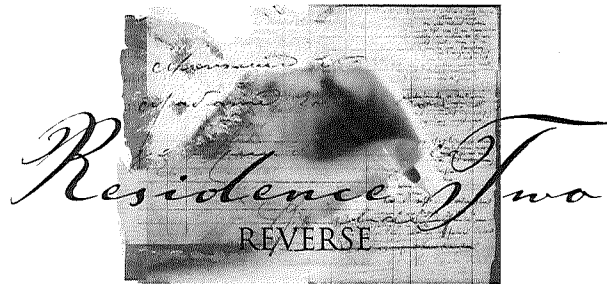
1AR



1BR

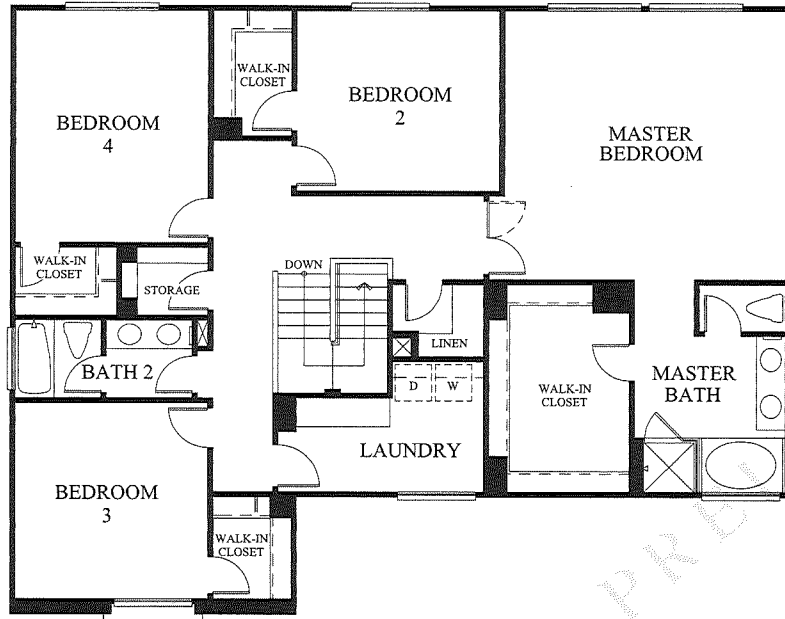


1CR

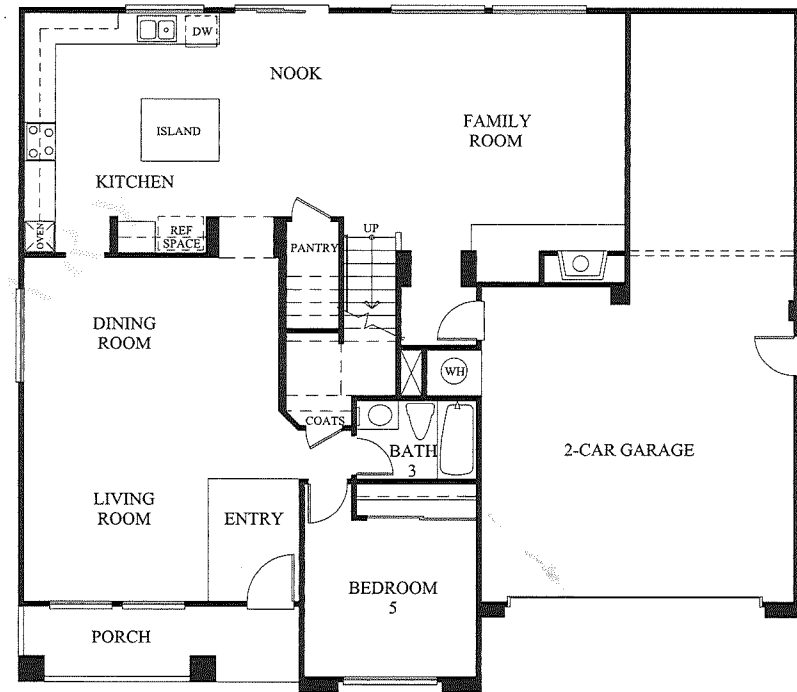


5 BEDROOMS 3 BATHROOMS 3,000 SQUARE FEET

The bright and airy kitchen with nook is the perfect place to welcome a new day. While the luxurious master suite is the ideal retreat as a day comes to an end. Reward yourself with a relaxing bath in the jetted oval soaking tub. Simply perfect!



Second Floor



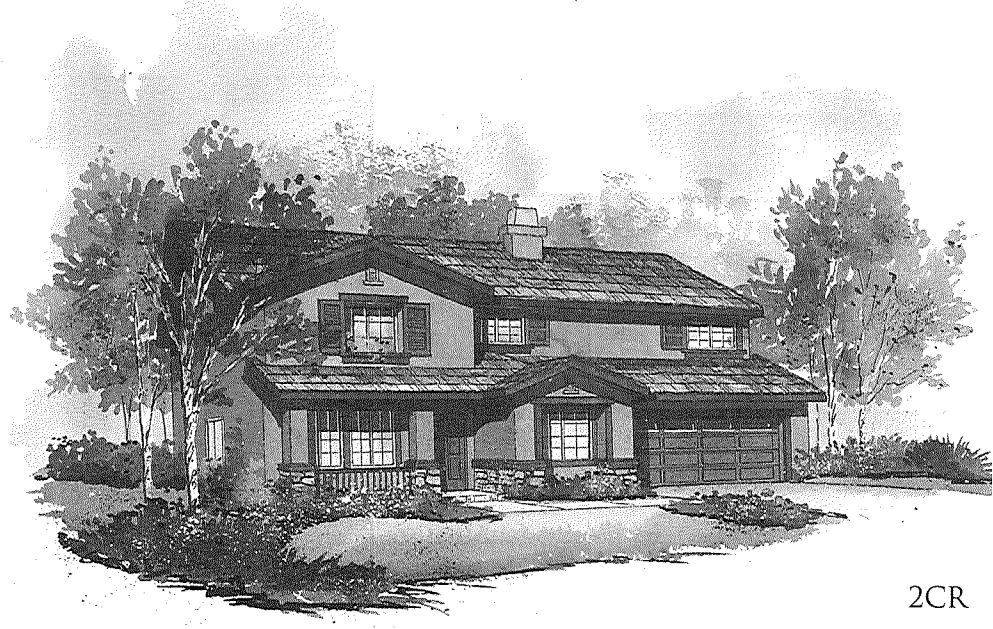
First Floor



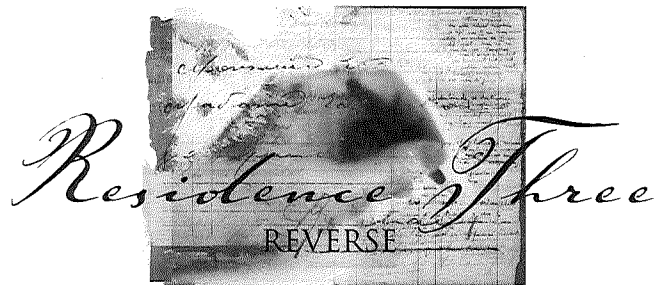
2AR



2BR



2CR

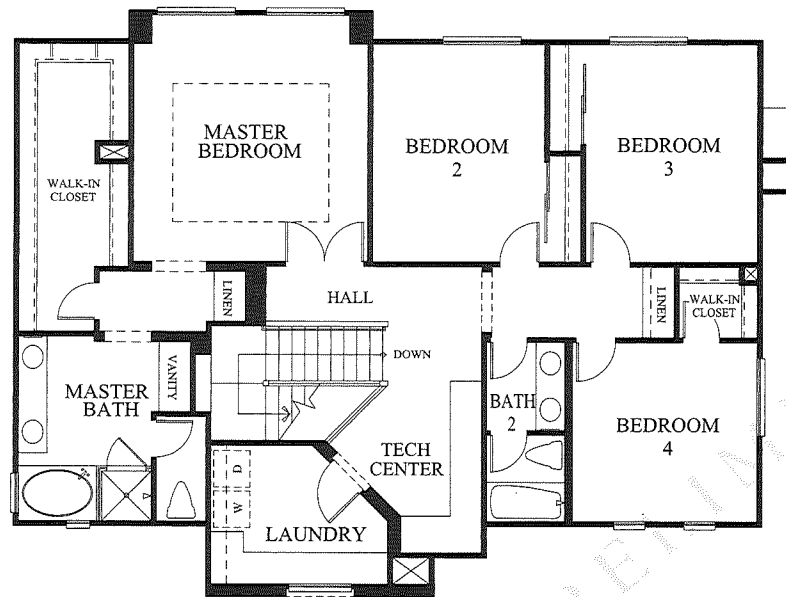


Residence Three

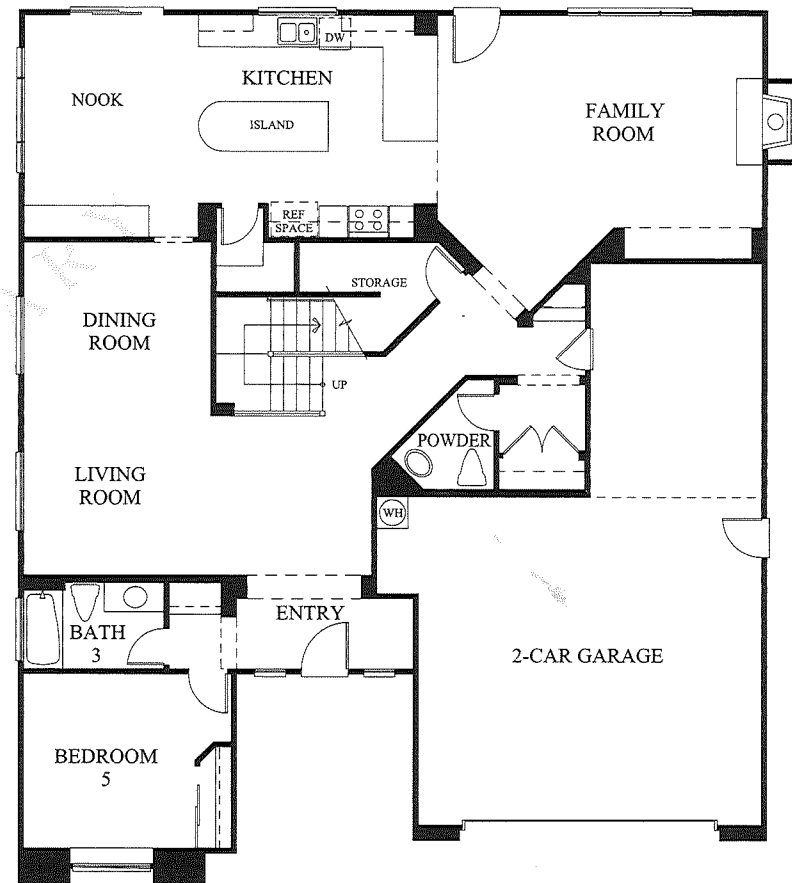
REVERSE

5 BEDROOMS 3 1/2 BATHROOMS 3,233 SQUARE FEET

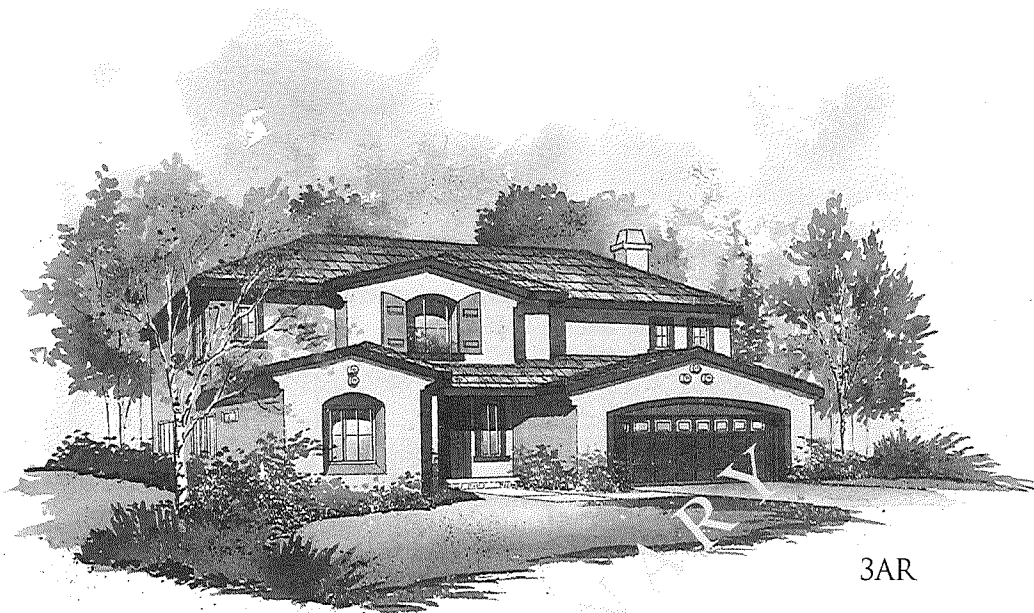
This home is a true delight for those who like to entertain. Guests have plenty of room to mingle in the large family room while a gourmet meal can be easily prepared in the well-equipped kitchen. For overnight guests the downstairs bedroom with bath provides comfort and privacy.



Second Floor



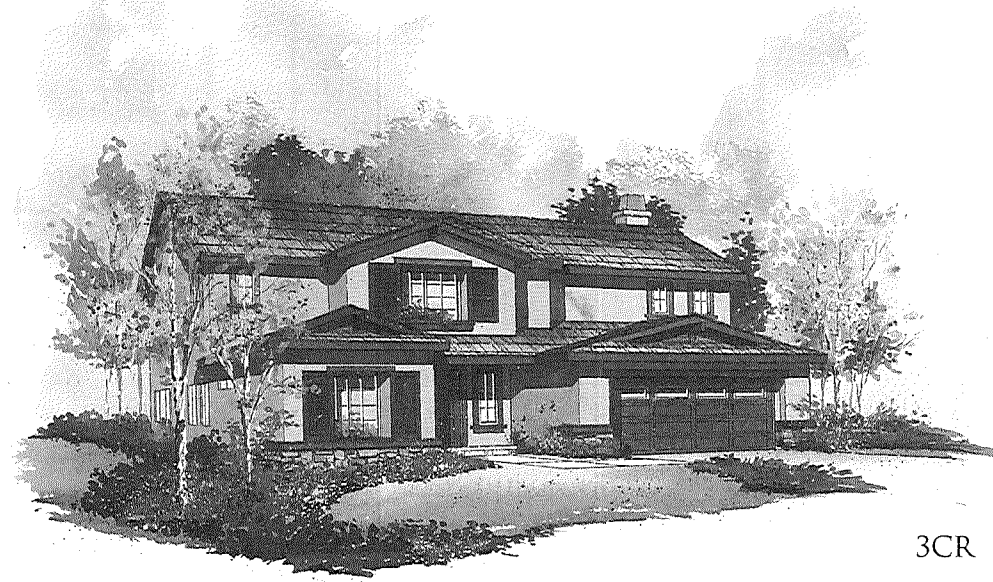
First Floor



3AR



3BR



3CR

Standard Features

Deluxe Features

- Architecturally coordinated exterior colors
- Fire-resistant concrete tile roofs
- State-of-the-art structural components
- Sectional roll up garage door with openers
- Decorator selected exterior lighting
- Chrome-finish entry hardware and chrome interior hardware
- Gas stub in rear yard for future barbecue
- Front yard landscaping
- Salt finish driveway
- Sherwin Williams® two tone paint
- Complete side and rear yard fencing for privacy
- Gutters and downspouts in select locations
- Exterior outlet with inside switch for holiday lighting

Stylish Interiors

- Ceramic tile entry flooring
- Traditional raised panel interior doors
- Solid oak stair handrail with white wood baluster
- Wood burning fireplace with glass panel doors
- Recessed accent lighting
- Architecturally pleasing door casings and wall baseboards
- Elegant wall-to-wall carpeting with a wide array of color selections
- Vinyl flooring in kitchen, laundry and baths
- Light texture on walls and ceilings
- Art niches and custom radius wall corners
- Media area in family room

Spacious Kitchens

- Gourmet center island
- Corian countertop with full splash at cooktop
- Beech cabinetry with vinyl interiors and adjustable shelves in upper cabinets
- Refrigerator area plumbed with recessed valve for icemaker
- Convenient under cabinet task lighting
- Conveniently located storage pantry
- Moen™ single-lever pull-out kitchen faucet
- Compartmental American Standard Americast sink with heavy-duty waste control
- Quality GE™ white appliances including:
 - 30" four-burner gas cooktop
 - Built-in self-cleaning double electric oven
 - Microwave/hood combo
 - Energy saving multi-cycle dishwasher
 - Refrigerator

Elegant Master Bedroom Suite and Bath

- Beech cabinetry with ceramic tile countertop
- Dual vitreous china vanity sinks
- Moen™ chrome fixtures
- Decorator selected vanity lighting
- Luxurious jetted oval tub and separate shower with ceramic tile surround
- Compartmental water closet with elongated toilet
- Double-sided mirrored closet doors
- Generous walk-in closet

Special Features

- RG6 for digital cable and satellite in all bedrooms and family room
- High-speed category 5e telephone wiring in all bedrooms, kitchen and media area
- Surround sound wiring at family room media area
- Silent touch Decora electrical switches
- Ceiling fan outlets with separate switch in all bedrooms and family room
- Smoke detectors throughout for fire safety
- Squeak resistant upper floors

Energy Efficient Features

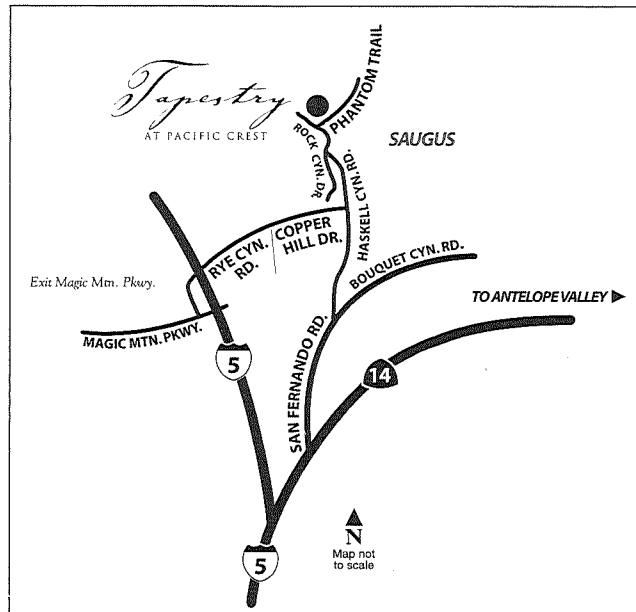
- Dual forced air heating and air conditioning system with night setback thermostat for energy savings
- Energy efficient 50 gallon water heater
- Full weather-stripping on most exterior doors
- Water saving toilets for energy conservation
- Low voltage exterior address light
- Vinyl Low E dual glazed windows and sliding doors

PRELIMINARY

In an effort to continuously improve our product, Greystone Homes reserves the right to change floor plans, elevations, specifications, materials and prices without prior notice. All plans, landscaping, floor plans, renderings and maps are an artist's conception, and are not intended to be an exact duplication of either building or landscaping. Variations in the floor plans and elevations do exist and square footages are approximate and will vary. Window locations and sizes as well as specific detailing may vary with different locations and elevations. Color and size variations may occur. The prices of our homes, included features, and available locations are subject to change without notice. Please see the actual home purchase agreement for additional information, disclosures, and disclaimers relating to the home and its features. © 2002 Greystone Homes, Inc.

The decorator items in the models, including and not limited to furnishings, window coverings, accent paint colors, wallpaper, molding and paneling, special mirrors, special carpeting and floor coverings, and lighting fixtures, patio covers, landscaping and hardscaping and certain fences are for suggestion and display only and are not included in the purchase price. Please see New Home Consultant for details.

All communities with homeowner's associations have been established to enhance the long-term value and integrity of the community. The association provides a vehicle for maintaining community common areas. The association is financially supported by all homeowners of said community. Membership is automatic. If a Landscape Maintenance District should occur within said community, homeowners automatically participate to support local schools, water and landscape districts. 1/03



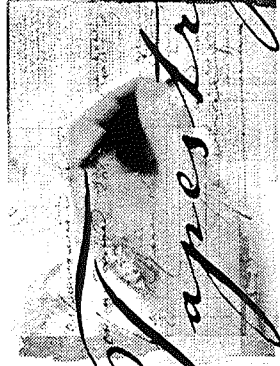
AT PACIFIC CREST

28823 N. PHANTOM TRAIL, SAUGUS, CALIFORNIA 91390

(661) 513-1542 (661) 513-1547 FAX

WWW.GREYSTONEHOMES.COM





Tapestry

AT PACIFIC CREST

Residence One

4 BEDROOMS 3 BATHROOMS 3-CAR TANDEM GARAGE 2,825 SQUARE FEET

\$434,990

FROM \$ _____

Residence Two

5 BEDROOMS 3 BATHROOMS 3-CAR TANDEM GARAGE 3,000 SQUARE FEET

\$448,990

FROM \$ _____

Residence Three

5 BEDROOMS 3 1/2 BATHROOMS 3-CAR TANDEM GARAGE 3,233 SQUARE FEET

\$474,990

FROM \$ _____

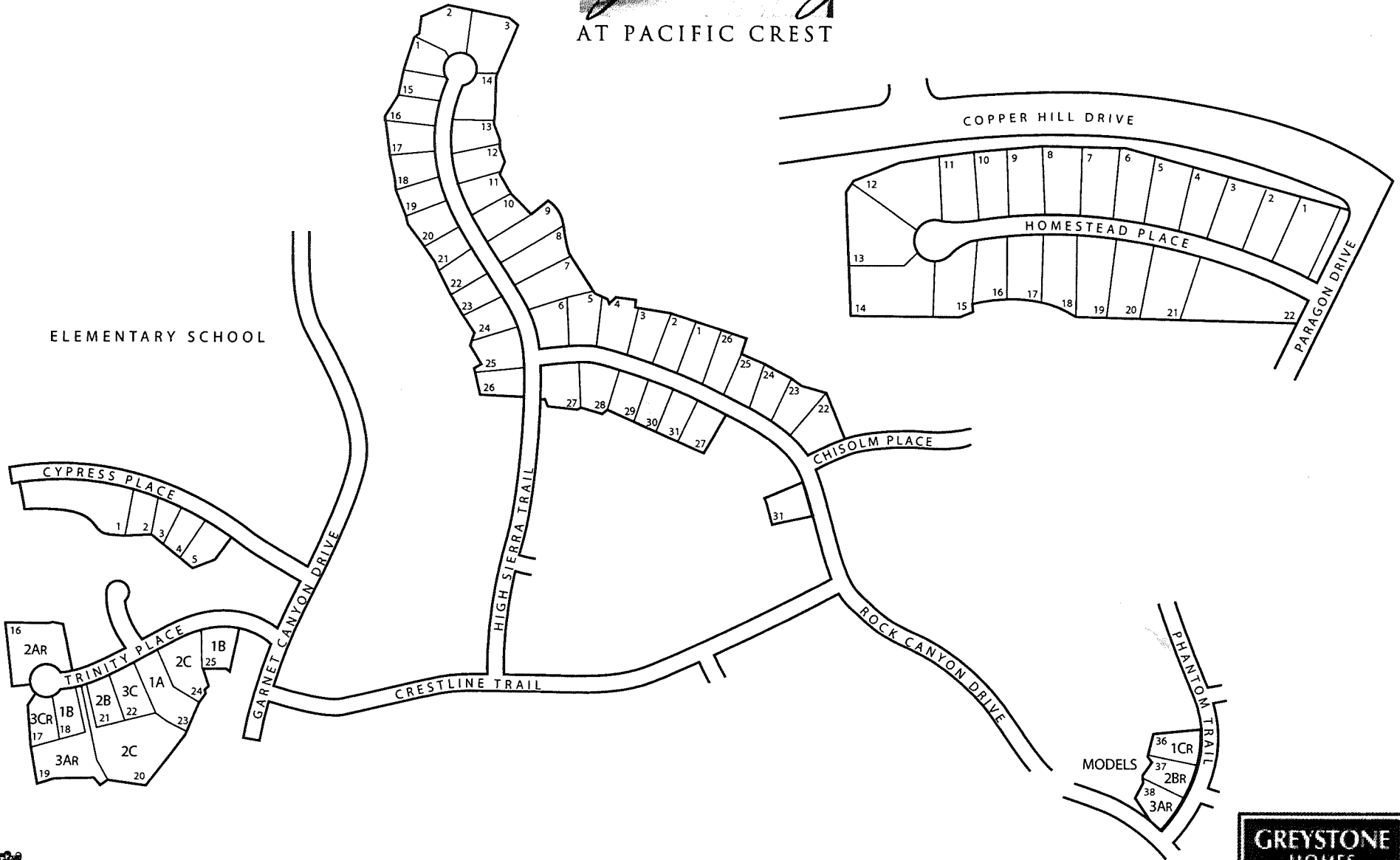
Ask About Everything's included.SM

In an effort to continuously improve our product, Greystone Homes reserves the right to change floor plans, specifications, materials and prices without prior notice. Variations in floor plans, windows and elevations do exist; square footage is approximate and will vary. Prices subject to change and availability. 1102



Tapestry

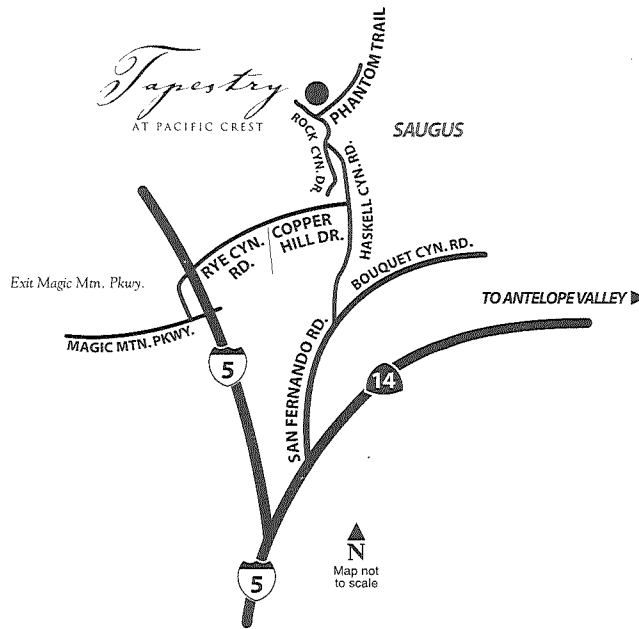
AT PACIFIC CREST



*Everything's
Included*



AT PACIFIC CREST



28823 N. PHANTOM TRAIL SAUGUS CALIFORNIA 91390

(661) 513-1542 (661) 513-1547 FAX

WWW.GREYSTONEHOMES.COM



A LENNAR COMPANY

GREYSTONE
HOMES

In an effort to continuously improve our product, Greystone Homes reserves the right to change floor plans, elevations, specifications, materials and prices without prior notice. All plans, landscaping, floor plans, renderings and maps are an artist's conception, and are not intended to be an exact duplication of either building or landscaping. Variations in the floor plans and elevations do exist and square footages are approximate and will vary. Window locations and sizes as well as specific detailing may vary with different locations and elevations. Color and size variations may occur. The prices of our homes, included features, and available locations are subject to change without notice. Please see the actual home purchase agreement for additional information, disclosures, and disclaimers relating to the home and its features. © 2002 Greystone Homes, Inc. The decorator items in the models, including and not limited to furnishings, window coverings, accent paint colors, wallpaper, molding and paneling, special mirrors, special carpeting and floor coverings, and lighting fixtures, patio covers, landscaping and hardscaping and certain fences are for suggestion and display only and are not included in the purchase price. Please see New Home Consultant for details. All communities with homeowner's associations have been established to enhance the long-term value and integrity of the community. The association provides a vehicle for maintaining community common areas. The association is financially supported by all homeowners of said community. Membership is automatic. If a Landscape Maintenance District should occur within said community, homeowners automatically participate to support local schools, water and landscape districts. 1/03

Everything's Included

First Impressions

	<i>Tapestry</i>	Home Choice #2	Home Choice #3
■ Architecturally coordinated exterior colors with fire-resistant concrete tile roofs	✓		
■ Sectional roll-up garage doors with openers	✓		
■ Raised panel eight foot front entry doors	✓		
■ Complete side and rear yard fencing for privacy	✓		
■ Salt finish driveway	✓		
■ Gutters and downspouts in select locations	✓		
■ Front yard landscaping	✓		

Well Appointed Interiors

■ Pre-wired with RG6 for digital cable and satellite in all bedrooms and family room	✓		
■ Surround sound wiring at family room media area	✓		
■ Pre-wired with high speed category 5e telephone wiring	✓		
■ Silent touch Decora electrical switches	✓		
■ Dual forced air heating and air conditioning system with night set-back thermostat for energy savings	✓		

Convenient Gourmet Kitchen

■ Corian countertop with full splash at cooktop	✓		
■ Beech cabinetry with vinyl interiors and adjustable shelves in upper cabinets	✓		
■ Quality GE™ white appliance package including:	✓		
30" four-burner gas cooktop	✓		
Built-in self cleaning double-electric oven	✓		
Microwave/hood combo	✓		
Energy saving multi-cycle dishwasher	✓		
Refrigerator	✓		
■ Compartmental American Standard "Americast" sink with heavy duty waste control	✓		
■ Moen™ single-lever pull-out kitchen faucet	✓		
■ Refrigerator area plumbed with recessed valve for ice maker	✓		
■ Convenient under cabinet task lighting	✓		
■ Gourmet center island	✓		
■ Conveniently located storage pantry	✓		

Inviting Interiors

■ Ceramic tile entry flooring	✓		
■ Elegant wall-to-wall carpeting with a wide array of color selections	✓		
■ Art niches and custom radius wall corners	✓		
■ Traditional raised panel interior doors with decorative chrome hardware	✓		
■ Media area in family room	✓		
■ Light texture on walls and ceilings	✓		
■ Wood burning fireplace with glass panel doors	✓		
■ Oak stair handrail with white wood balusters	✓		
■ Ceiling fan outlets with separate switch in all bedrooms and family room	✓		
■ Sherwin Williams® two-tone paint	✓		
■ Architecturally pleasing door casings and wall baseboards	✓		

Luxurious Master Bedroom Suite and Bath

■ Beech cabinetry with ceramic tile countertop	✓		
■ Dual vitreous china vanity sinks with buyer preferred Moen™ chrome fixtures	✓		
■ Compartmental water closet with elongated water-saving toilet	✓		
■ Generous walk-in closet	✓		
■ Luxurious jetted oval tub and separate shower with ceramic tile surround	✓		
■ Decorator selected vanity lighting	✓		
■ Double-sided mirrored closet doors	✓		

Bonus Features

■ Squeak resistant upper floors	✓		
■ Smoke detectors throughout	✓		
■ Vinyl Low E dual glazed windows and sliding doors	✓		
■ Energy efficient 50 gallon water heater	✓		
■ Water saving toilets	✓		
■ Gas hook-up in laundry area	✓		
■ Full weather-stripping on most exterior doors	✓		
■ Low voltage exterior address light	✓		
■ Gas stub in rear yard for future barbecue	✓		
■ Exterior outlet with inside switch for holiday lighting	✓		