



SUMMER MOON

(805) 263-2298

PLAN ONE ADIRONDACK

Approximately 2,523 to 2,667 Square Feet

Two Story

Four Bedrooms

Three Baths

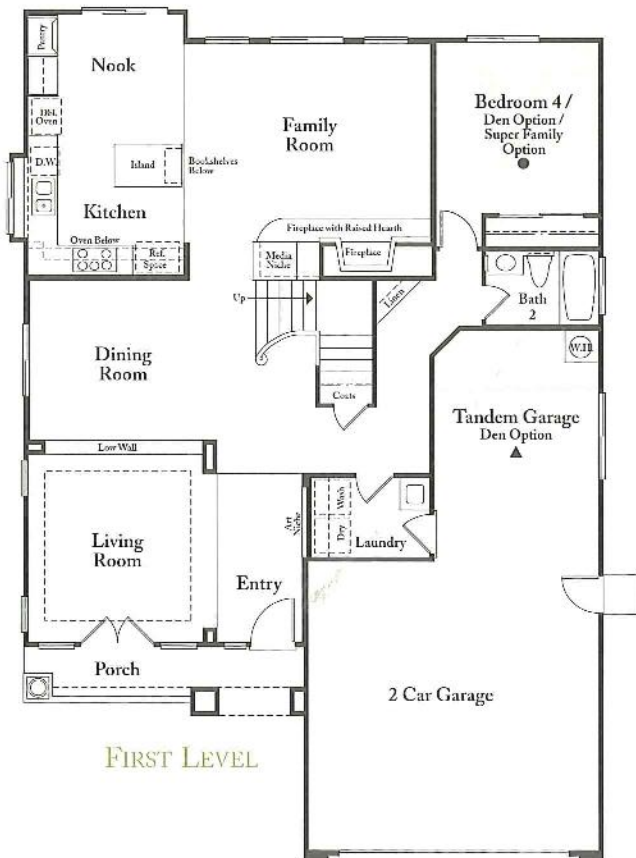
Family Room

Formal Dining Room

Large Kitchen with Nook

Study Area

Two Car plus Tandem Garage



Window locations and sizes may vary per elevation

PLAN TWO BENTWOOD

Approximately 2,556 to 2,738 Square Feet

Two Story

Three Bedrooms plus Den

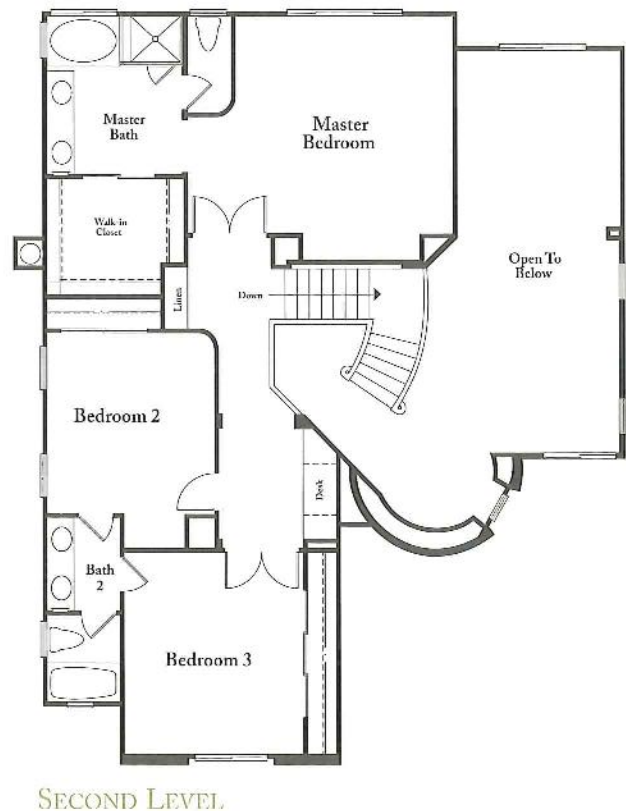
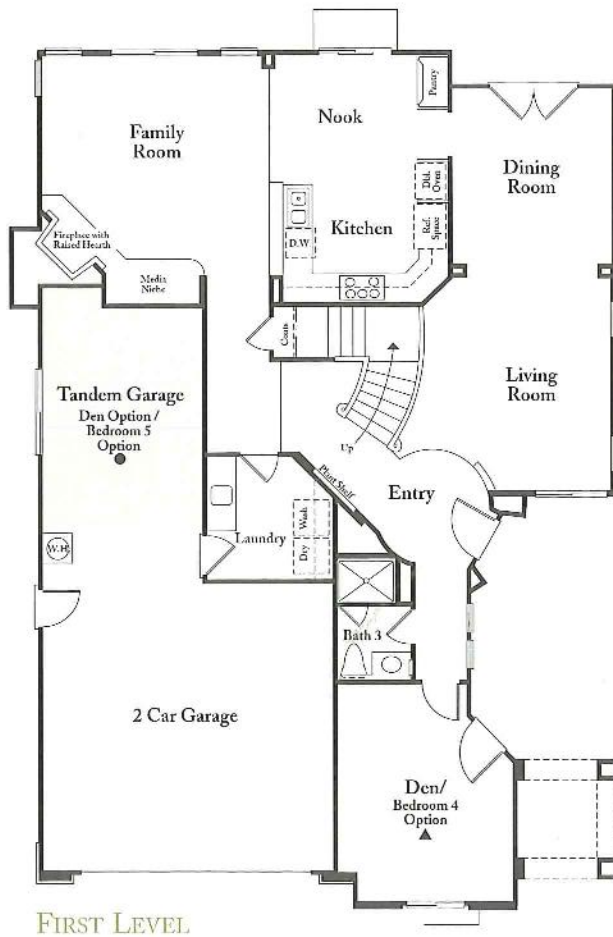
Two and Three Quarter Baths

Formal Living Room

Dining Room

*Large Kitchen with Nook
and Family Room*

Two Car plus Tandem Garage



Window locations and sizes may vary per elevation

PLAN THREE WILLOW WICK

Approximately 2,739 to 2,941 Square Feet

Two Story

Five Bedrooms

Two and Three Quarter Baths

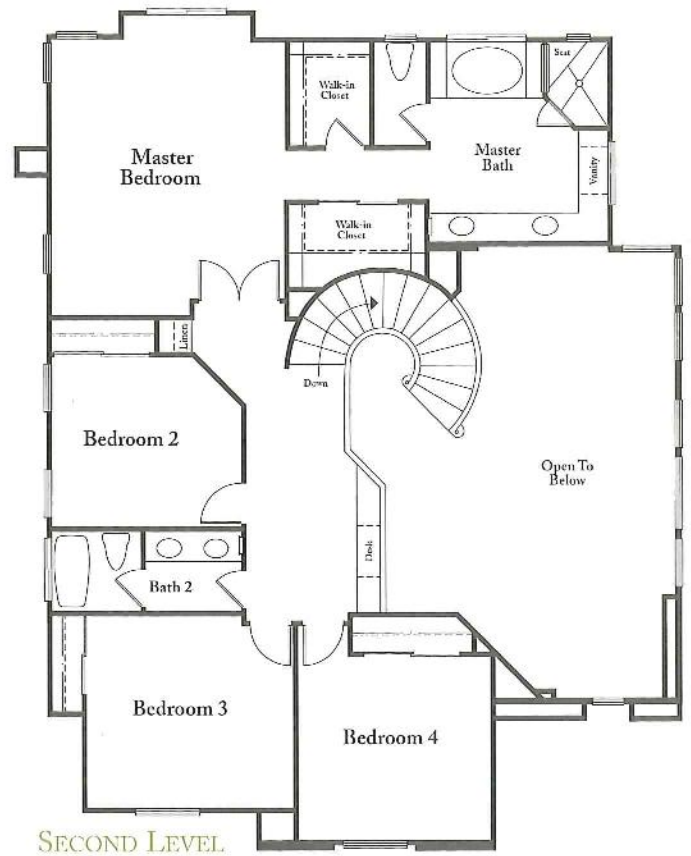
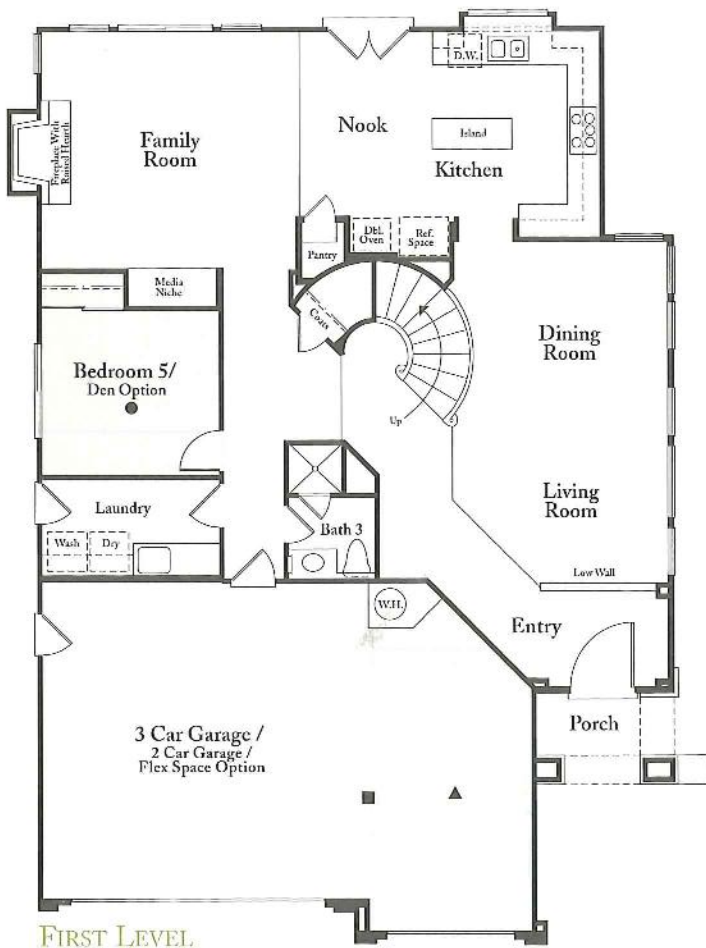
Study/Retreat Area

Formal Dining Room

Circular Staircase

Interior Laundry

Three Car Garage



Window locations and sizes may vary per elevation

PACIFIC BAY HOMES

There are two things in life that are for keeps. Your family and your home. The better your home is built, the more your family can depend on it. And you can be assured of quality when your home is built by Pacific Bay Homes, L.L.C. The company is responsible for some of the finest residential communities in the country, from California to New York. Pacific Bay Homes now has four rapidly growing divisions in California and ranks among the top homebuilders in the state.

Our goal? Build each home to be as special as the priceless memories born there. The building blocks? Quality design, engineering, materials and craftsmanship all working together to complement each other.

A home built by Pacific Bay Homes begins with a design created by one of a select group of leading architectural firms. They work hand in hand with our construction engineers to create and guide the quality construction of your home. Pacific Bay Homes only uses building materials that meet or exceed industry standards in constructing your home. Each part of your home is built nail-by-nail, board-by-board, pipe-by-pipe by experienced contractors to meet our strict standards.

Our dedication to customer satisfaction is likewise unparalleled, as evidenced by the fact that Pacific Bay Homes

was named Best Home Builder in California by National Survey Systems.

In this survey of over 12,000 new home buyers, Pacific Bay Homes earned the coveted Home Buyers

Choice award, ranking Pacific Bay Homes number one in quality of construction, customer service and overall buyer satisfaction among 32 major California builders.

In all, Pacific Bay Homes designs and builds each house to meet the standards of the most demanding authority of all: the family that calls it home.



AMENITIES

DISTINCTIVE ARCHITECTURAL FEATURES:

- Exciting exterior designs featuring Hardiplank, textured siding, stucco with brick or stone accents (Per Plan)
- Integral color concrete tile roofs, fire resistant, low maintenance and architecturally pleasing
- Lighted address numbers
- Exterior gas service at rear of home for future barbecue
- Convenient indoor laundry rooms with cultured marble countertop, sink and cabinets
- Bullnose interior drywall corners
- Fiberglass Thermo-Tru raised panel front entry doors with Titan solid brass "Chelsea" lockset and deadbolt
- Raised four panel passage doors with Kwikset "Copa" knobs
- Hand-crafted oak stair system with end treads
- Powder coated, white, ventilated closet shelving
- Pre-wired systems:
 - Telephone and cable television included in all bedrooms, as well as standard locations
 - Home security
 - Ceiling fan outlets in family room and master bedroom
 - Separate category 5 wiring in all bedrooms and select locations
- Complete side and rear yard masonry walls and/or tubular steel fencing per lot plan
- Three car garages available (configurations optional Per Plan), with insulated steel, sectional roll-up garage doors with opener and 2 transmitters



- Five burner sealed gas cooktop
- Thirty-inch double oven with "AccuBake" system and self-cleaning upper with "EZ-Touch" controls
- Deluxe five cycle dishwasher
- 1.4 cubic foot microwave oven/hood combo
- Hand-set 6" x 6" ceramic tile countertops with full height splash at cooktop
- Hand-crafted oak cabinetry with concealed hinges
- Refrigerator plumbed for ice-maker water service
- Walk-in pantry (Plan 3)
- Soft, under cabinet, task lighting
- Price Pfister fixture with pull-out faucet
- Recessed ceiling downlighting

COMFORTABLE LIVING AREAS:

- Built-in desk(s) at secondary bedroom and/or hallway (Per Plan)
- Forty two-inch wood burning fireplace with oak mantel and stone or brick face and hearth (Per Plan)
- Media niches
- Elegant hand-set ceramic tile entry
- Dramatic cathedral, vaulted or coffered ceilings (Per Plan)
- Vinyl flooring in kitchen, laundry and secondary bath areas
- Smoke detectors with warning alarm
- Recessed ceiling lighting with bulbs
- "Decora" silent electrical switches

PRIVATE MASTER AND BATH:

- Hand-crafted oak cabinetry with semi-concealed hinges
- Oval tub with separate shower and clear enclosure with ceramic tile surrounds and shampoo niche



- Private compartmentalized water closet
- Ceramic tile pullman tops with dual sinks
- Spacious walk-in closets
- Elegant Price Pfister chrome widespread faucets
- Full-length mirrored wardrobe doors



SPECIAL FEATURES AND ENERGY SAVERS:

- Dual glazed windows
- Honeywell, programmable digital thermostat
- Energy efficient 50-gallon water heater
- Plumbed for gas dryer service
- Single lever shutoff at washer
- Mirrored wardrobe doors in secondary bedrooms
- Energy efficient heating and air conditioning systems
- Porcelain on steel tubs in secondary baths
- Stain grade linen cabinets (except at Plan 1 hall)

BUILDER OPTION SELECTION SUMMARY:

- Black appliance package available
- Kitchen countertop materials and full-height splash: granite and selected tile color
- Cabinet finishes with corresponding stair and mantel finish
- Convection upper oven
- Additional electrical outlets
- Master bath countertop and surrounds: designer selected tile colors
- Tub/shower enclosures in secondary baths
- Den, flex space and super family room alternates (Per Plan)
- Garage door with glass windows

GOURMET KITCHENS:

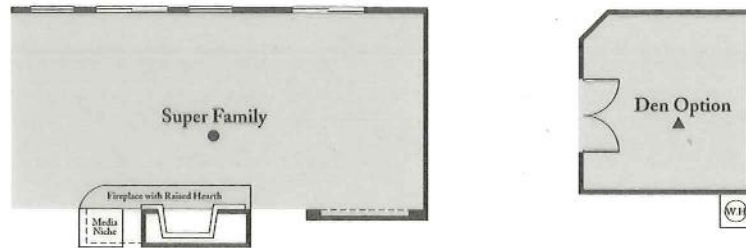
- Built-in Whirlpool quality appliances in white including:

SUMMER MOON

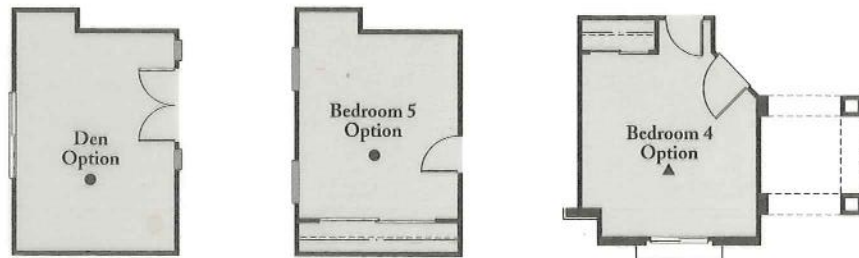
Available Options:

Line up symbol (●,◆,▲) with corresponding symbol on original floorplan for option review.

PLAN ONE ADIRONDACK



PLAN TWO BENTWOOD



PLAN THREE WILLOW WICK

