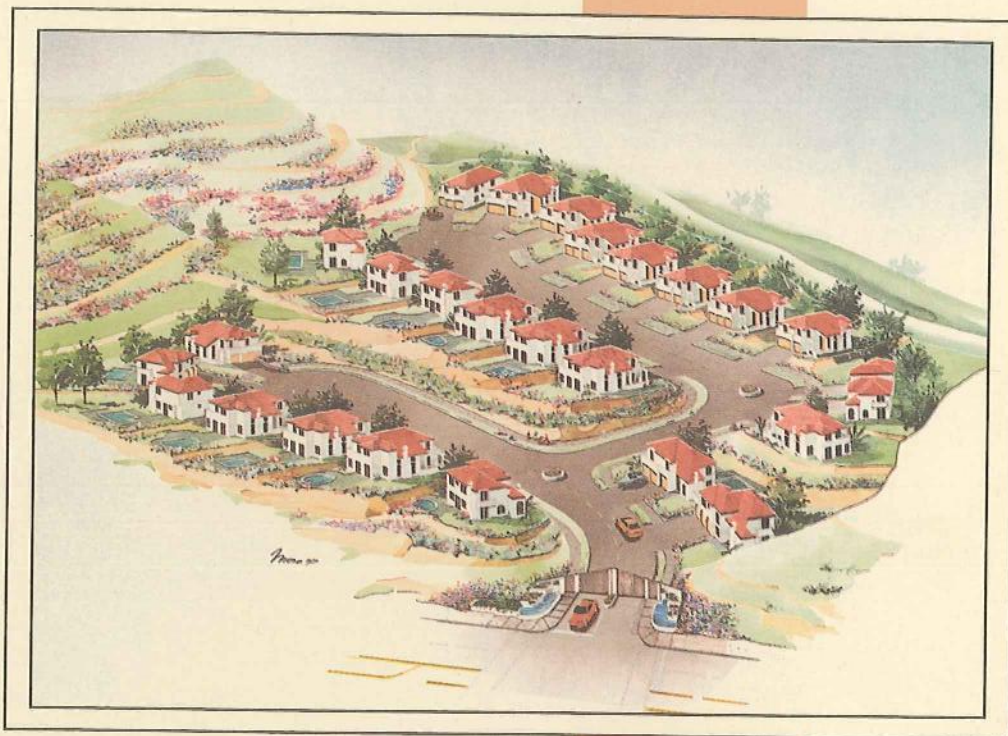


Playa Village

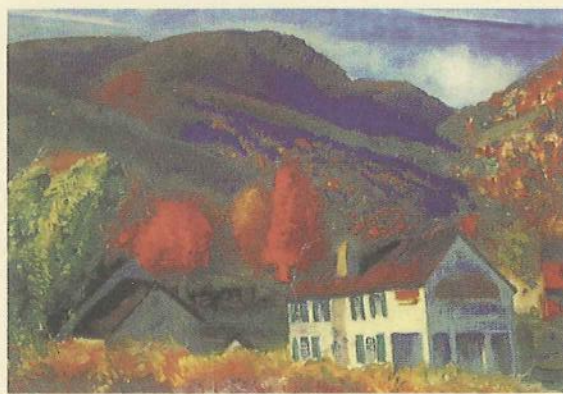


*Mediterranean
Living At It's Finest*

It is about cool breezes in the warm sun. It is about the golden tones of sunset across California hills. It is about time. Playa Village has arrived. Because you have arrived.

At Playa Village, we're preparing an oasis for your family where beauty, comfort, and safety are only the beginning. Life at Playa Village makes a statement to the world about who you are and where you're going. It says that your family isn't interested in making compromises. That's why you won't find any compromises at Playa Village. It says that your appreciation of

life's finer things is considerable. That's why Playa Village meets your every demand of a luxury home and indulges your every fancy. The features of a Playa Village home are too numerous to list. Let's just look at some of the basics.



Location, Location, Location

Nestled in the Santa Clarita Valley, Playa Village offers a wealth of advantages to discriminating home buyers. Like excellent public schools. Like easy freeway access without the traffic jams. Like easy Metrolink access for commuting to downtown L.A. Like a great climate without the city smog. Recreational facilities only minutes away. Thrills and excitement when you want them or the simple pleasure of a walk in the serenity of nearby Angeles National Forest. With one of the lowest crime rates in America, and recently named one of America's 50 finest places to live, The Santa Clarita Valley offers the best that Southern California has to offer.

Distinction and Quality

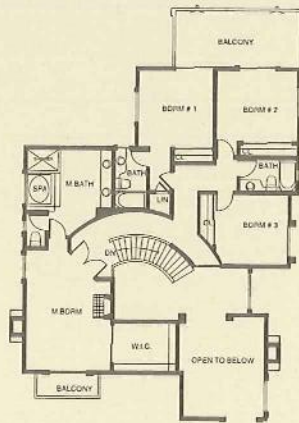
Playa Village homes are conceived, designed, and crafted for people who appreciate the finest quality. Hand selected materials constructed by expert craftsmen from the classic designs of our architects are what you'd expect at a location this prestigious. And that's exactly what you get. Complete with every contemporary convenience today's busy lifestyles demand and your heart desires. With sprawling floorplans in either our Vista or our Playa designs, you'll have the space you need in the luxury and style you deserve. You may never want to leave home.

Safe and Secure

Your worries are over. Playa Village is a private gated community of only 26 choice homes. Because security in your own home is something you should be able to take for granted, we've designed Playa Village to be the ultimate in safe living without surrendering your privacy. After all, the best security is the kind you don't have to think about.



FIRST FLOOR PLAN



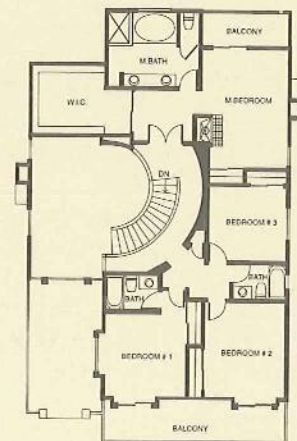
SECOND FLOOR PLAN

VISTA

PLAYA

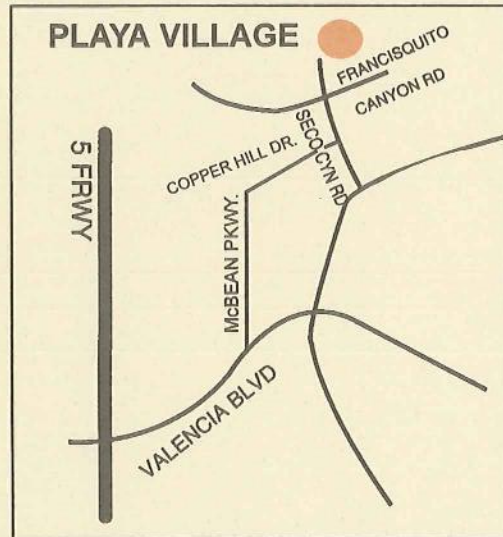


FIRST FLOOR PLAN



SECOND FLOOR PLAN

*Timeless in its elegance, state-of-the-art in its convenience,
and absolute in its security, Playa Village is an idea whose time has come.
Crafted from the finest materials by expert craftsmen,
Playa Village is beautiful in the tradition of the Tuscan countryside.
Nestled in the Santa Clarita Valley, Playa Village is a private gated community of
only 26 exclusive estate homes.
(We work hard if you prefer to think of them as private villas.)*



For Sales Information, Please Call

Playa Village

(661) 263-1344

Off-Site Sales Office

(323) 692-1925

PLAYA VILLAGE

A PRIVATE GATED COMMUNITY

STANDARD AMMENITIES

ENTRY	12" X 12" CERAMIC TILE 6' X 8' DOUBLE DOOR WIRING FOR LIGHTING FIXTURE
LIVING ROOM	STEP DOWN FIREPLACE WITH MANTEL HIGH CEILINGS
DINING ROOM	VAULTED CEILINGS WIRING FOR LIGHTING FIXTURE
FAMILY ROOM	FIREPLACE WITH MANTEL
KITCHEN	12" X 12" CERAMIC TILE FLOOR 6" X 6" CERAMIC TILE COUNTERTOPS WITH 6" SPLASH LARGE ISLAND COUNTER WITH 6" X 6" CERAMIC TILE SPACIOUS PANTRY WITH GLASS DOOR BREAKFAST NOOK WHIRLPOOL 30" SELF-CLEANING WALL OVEN WHIRLPOOL 30" SEALED GAS COOKTOP WHIRLPOOL 850W OVER THE RANGE MICROWAVE OVEN HOOD COMBO WHIRLPOOL 6 CYCLE QUIET DISHWASHER MAPLE CABINETS WITH ROCKWELL DOORS AND SOLID DRAWER FRONTS FOUR RECESSED CAN LIGHTS
POWDER/ FIRST FLOOR BATH	4" X 4" CERAMIC TILE COUNTERS 4" X 4" CERAMIC TILE WAINSCOT WALL MIRRORED WALL OVER SINK MAPLE CABINETS WITH ROCKWELL DOORS AND SOLID DRAWER FRONTS MOEN TWO-TONE PLUMBING FIXTURES TOP ENCLOSURE FOR TUB/SHOWER ONE RECESSED CAN LIGHT
LAUNDRY	12" X 12" CERAMIC TILE FLOORING LAUNDRY SINK WASHER AND DRYER HOOK-UPS ONE RECESSED CAN LIGHT
BEDROOM 5	CLOSET WITH BUILT-IN SHELVES AND POLE
MASTER BEDROOM	LARGE WALK-IN CLOSET WITH BUILT-IN SHELVES AND POLES SLIDING GLASS DOOR OPENS TO JULIET BALCONY DOUBLE DOOR ENTRY

MASTER BATHROOM	<p>6" X 6" CERAMIC TILE COUNTERS WHIRLPOOL JACUZZI SPA-TUBS GLASS SHOWER DOOR MAPLE CABINETS WITH ROCKWELL DOORS AND SOLID DRAWER FRONTS DUAL SINKS VANITY AREA DUAL MEDICINE CABINETS MIRRORED WALL TWO RECESSED CAN LIGHTS</p>
BEDROOM 2	<p>SLIDING MIRRORED WARDROBE DOORS BUILT-IN SHELVES AND POLE</p>
BEDROOM 3	<p>SLIDING MIRRORED WARDROBE DOORS BUILT-IN SHELVES AND POLE</p>
BEDROOM 4	<p>SLIDING MIRRORED WARDROBE DOORS BUILT-IN SHELVES AND POLE</p>
BATHROOM SECOND FLOOR	<p>DUAL SINKS 4" X 4" CERAMIC TILE TOP ENCLOSURE DUAL MEDICINE CABINETS MOEN TWO-TONE PLUMBING FIXTURES MAPLE CABINETS WITH ROCKWELL DOORS AND SOLID DRAWER FRONTS</p>
LIBRARY	
HOME INTERIOR	<p>CATEGORY 5 WIRING THROUGHOUT INTERCOM DOOR ENTRY CABLE TV WIRING THROUGHOUT PHONE AND CABLE OUTLETS THROUGHOUT COMPLETE SECURITY SYSTEM TWO SEPARATE A/C UNITS COPPER PIPE THROUGHOUT VINYL WINDOWS THROUGHOUT DRYWALL NICHES AND ARCHES TWO PIECE 1.6 GALLON AS TOILET 50 GALLON HIGH EFFICIENCY WATER HEATER CARPET ALLOWANCE OF \$12 PER YARD THROUGHOUT DOWNSTAIRS CORRIDOR THREE RECESSED CAN LIGHTS UPSTAIRS CORRIDOR THREE RECESSED CAN LIGHTS DRYWALL TEXTURE "ORANGE PEEL" SWISS COFFEE PAINT THROUGHOUT</p>
HOME EXTERIOR	<p>STANDARD CONCRETE DRIVEWAY ONE LIGHTING FIXTURE FRONT YARD ONE LIGHTING FIXTURE REAR YARD THREE SECTIONAL WOOD GARAGE DOORS ONE STEEL SECTIONAL PASS THROUGH DOOR BALCONIES WITH CUSTOM TEX-CRETE STAMP FLOOR WOOD FENCE WOOD GATE</p>

**UPGRADES/OPTIONS AVAILABLE PLEASE SEE SALES TEAM FOR MORE INFORMATION

PLAYA VILLAGE, INC. reserves the right to modify features, specifications, and/or prices without notice or obligation. We fully expect to revise our features as our product develops. All square footages are approximate. As a resident of Playa Village, you will automatically become a member of the Homeowners Association, which maintains common facilities and promotes architectural standards. Please consult our sales team for complete details.

PLAYA VILLAGE

A PRIVATE GATED COMMUNITY

PLAYA

TWO STORY•FIVE BEDROOMS•THREE BATHS•
GOURMET KITCHEN•FORMAL DINING ROOM•
DRAMATIC CEILINGS•TWO FIREPLACES•
THREE CAR GARAGE
APPROXIMATELY 3,000 SQ.FT.
STARTING FROM: \$482,000

ARROYO

TWO STORY•FIVE BEDROOMS•THREE BATHS•
GOURMET KITCHEN•FORMAL DINING ROOM•
DRAMATIC HIGH CEILINGS•TWO FIREPLACES•
THREE CAR GARAGE
APPROXIMATELY 3,000 SQ.FT.
STARTING FROM: \$490,000

CASCADA

TWO STORY•FIVE BEDROOMS•THREE BATHS•
GOURMET KITCHEN•FORMAL DINING ROOM•
DRAMATIC HIGH CEILINGS•TWO FIREPLACES•
THREE CAR GARAGE
APPROXIMATELY 3,000 SQ.FT.
STARTING FROM: \$495,000

VISTA

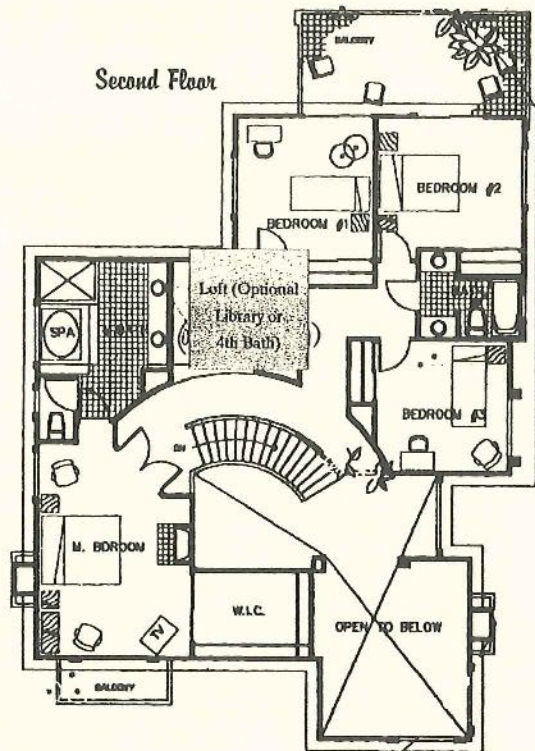
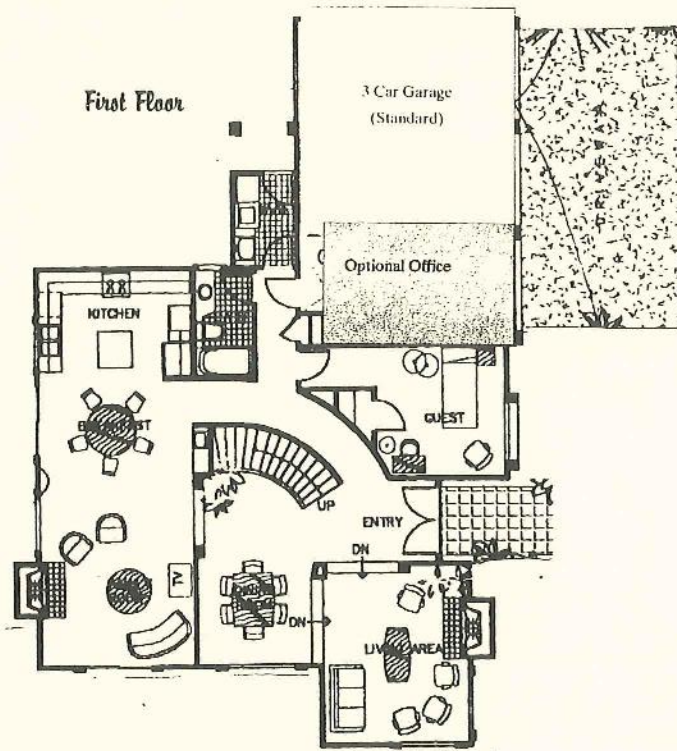
TWO STORY•FIVE BEDROOMS•THREE BATHS•
GOURMET KITCHEN•FORMAL DINING ROOM•
DRAMATIC HIGH CEILINGS•TWO FIREPLACES•
THREE CAR GARAGE WITH PASS THROUGH•
APPROXIMATELY 3,000 SQ.FT.
STARTING FROM: \$515,000

CASCADA ESPECIAL

TWO STORY•FIVE BEDROOMS•THREE BATHS
SPACIOUS GOURMET KITCHEN•FORMAL DINING ROOM•
DRAMATIC HIGH CEILINGS•TWO FIREPLACES•
THREE CAR GARAGE
APPROXIMATELY 3,200 SQ.FT.
STARTING FROM: \$565,000

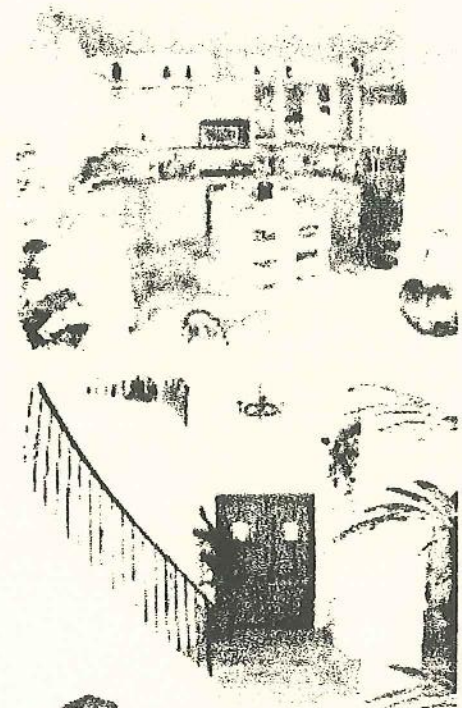
The Vista

Priced from \$515,000



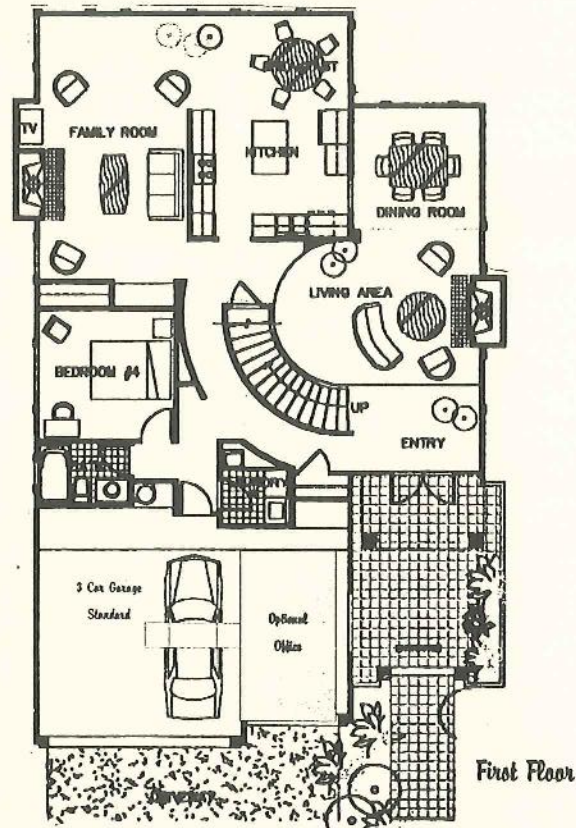
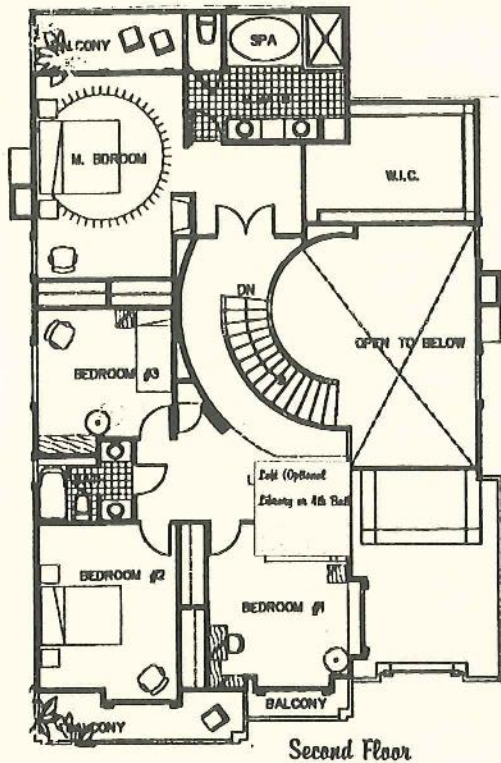
Features:

- *2 Stories
- *Gourmet Kitchen
- *Dramatic Entry
- *3 Car Garage w/Pass-through
- *2 Fireplaces (3 optional)
- *Indoor Laundry Room
- *Family Room
- *5 Bedrooms/3 Baths
- *Formal Dining Room
- *Vaulted Ceiling
- *2 Balconies
- *Loft (Optional: Library or 4th Bath)
- *Approx. 3,000 sq.ft.



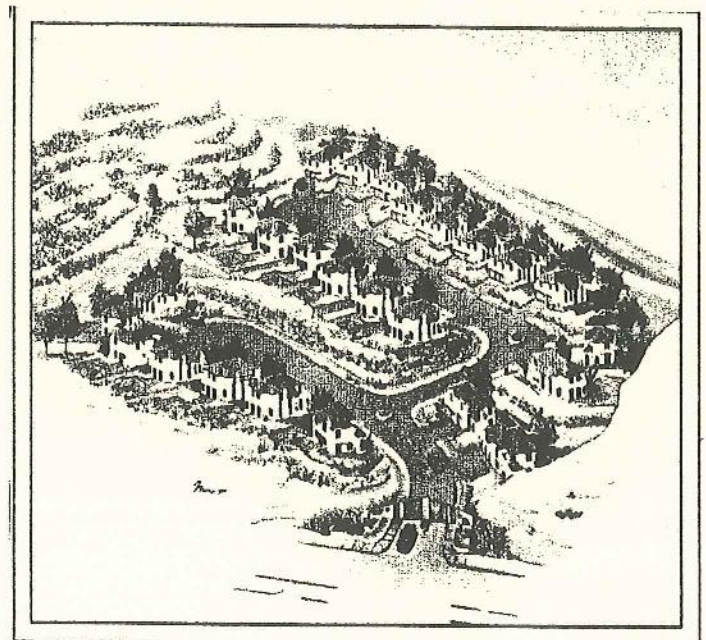
The Arroyo

Priced from \$490,000



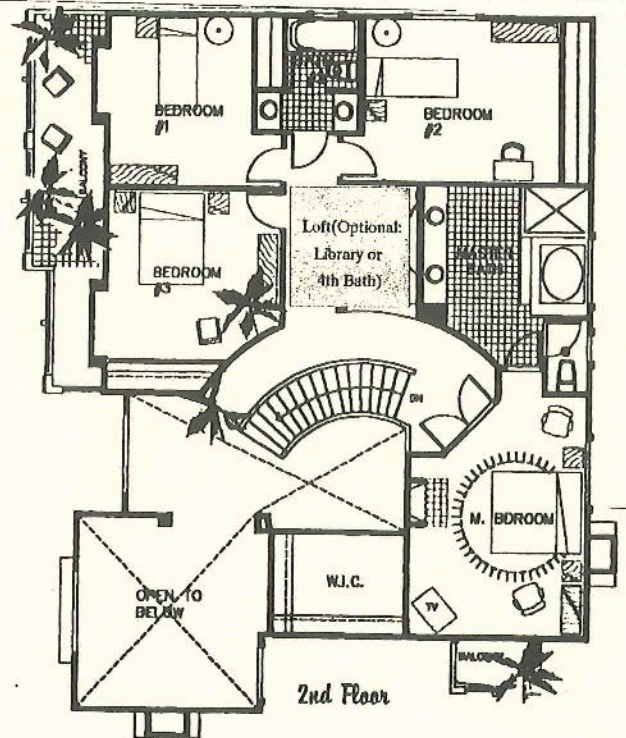
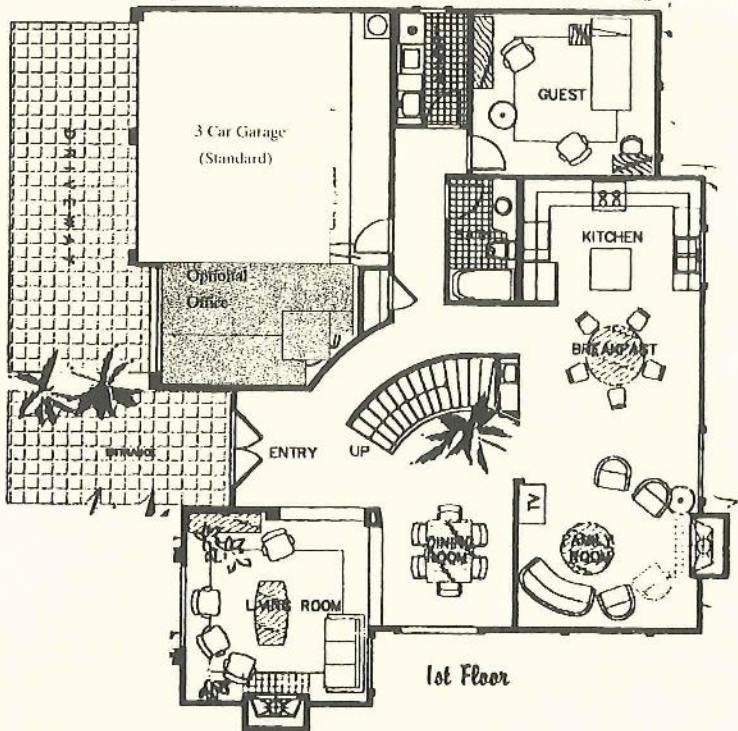
Features:

- * 2 Stories
- * 5 Bedrooms 3 Baths
- * Gourmet Kitchen
- * Formal Dining Room
- * Dramatic Entry
- * Vaulted Ceiling
- * 2 Fireplaces (3 optional)
- * 3 Car Garage
- * 3 Balconies
- * Loft (optional)
- * Large Family Room
- Library or 4th Bath
- * Indoor Laundry Room
- * Approx. 3,000 sq.ft.



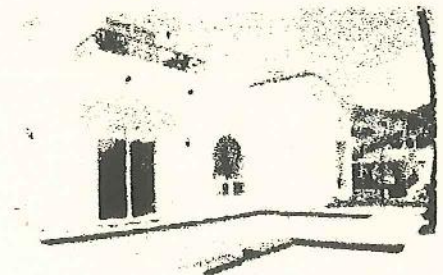
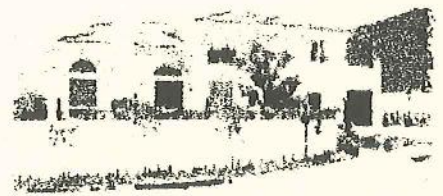
The Cascada

Priced from \$495,000



Features:

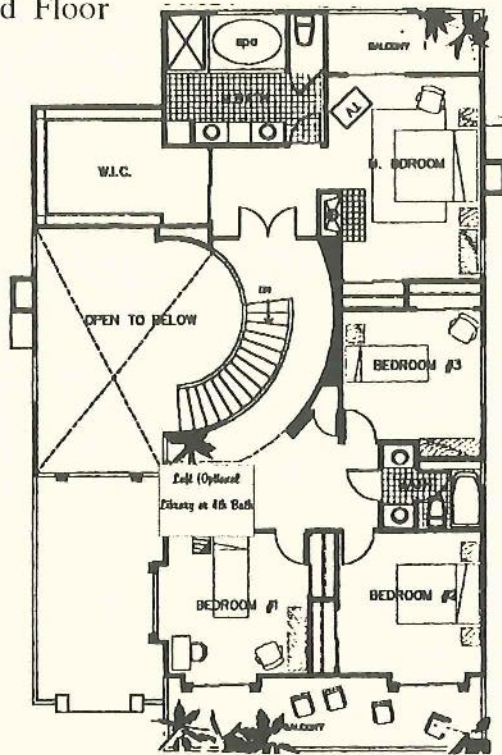
- *2 Stories
- *Gourmet Kitchen
- *Dramatic Entry
- *2 Fireplaces (3 Optional)
- *2 Balconies
- *Loft (optional:
Library or 4th Bath)
- *5 Bedrooms/ 3 Baths
- *Formal Dining Room
- *Vaulted Ceiling
- *3 Car Garage
- *Indoor Laundry Room
- *Family Room
- *Approx. 3000 sq.ft.



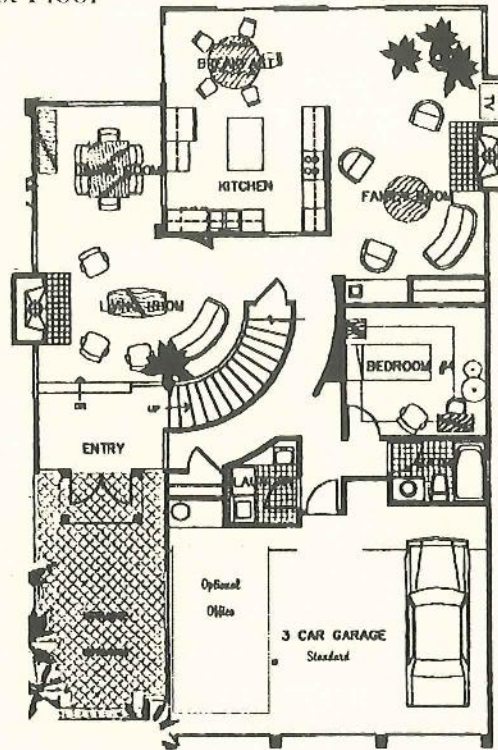
The Playa

Priced from \$482,000

Second Floor



First Floor



Features:

- *2 Stories
- *Gourmet Kitchen
- *Dramatic Entry
- *2 Fireplaces (3 Optional)
- *2 Balconies
- *Large Family Room
- *Indoor Laundry Room
- *5 Bedrooms/3 Baths
- *formal Dining Room
- *Vaulted Ceiling
- *3 Car Garage
- *Loft (optional:
Library or 4th Bath)
- *Approx. 3,000 sq.ft.

