

A black and white photograph of several oak leaves scattered on a dark, textured surface. The leaves are covered with numerous small, glistening water droplets of varying sizes, creating a fresh and natural aesthetic. The lighting highlights the veins of the leaves and the texture of the water droplets.

Oak Lane
Beazer Homes



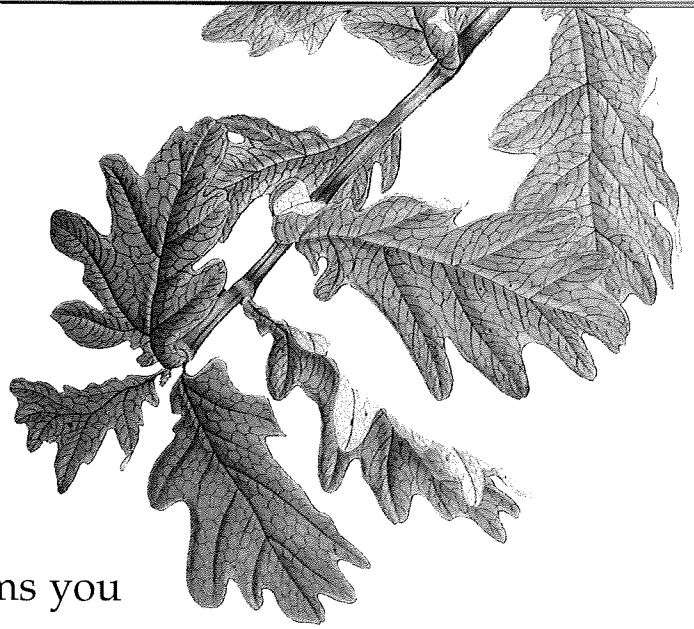
Living Easy.

Ever wonder why it seems you always have to compromise when it comes to a new home? You have to give up on having a spacious home to get an affordable price, sacrifice the location of your choice for the amenities you want.

Well, not anymore.

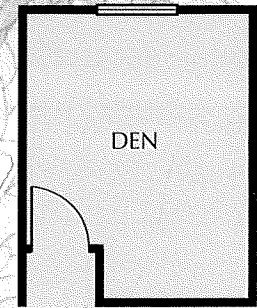
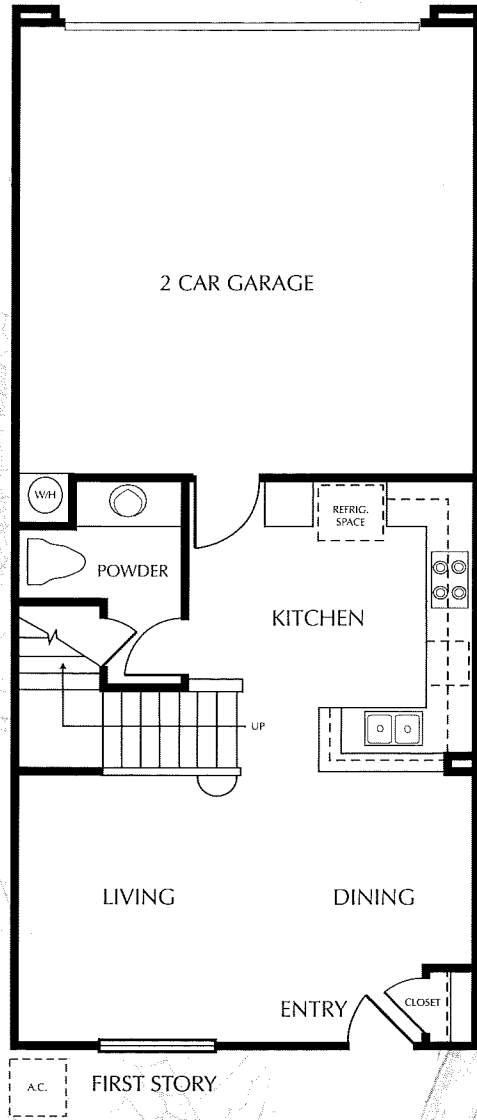
At Oak Lane, you can have it all — location, space, and amenities — for a price that will amaze you. Located in a serene Santa Clarita environment, Oak Lane offers spacious floorplans with up to four bedrooms, a community pool and spa, and park, along with convenience to work centers, fine dining, shopping, entertainment and great schools, via freeways and the Metrolink Station.

Oak Lane. This is the life.

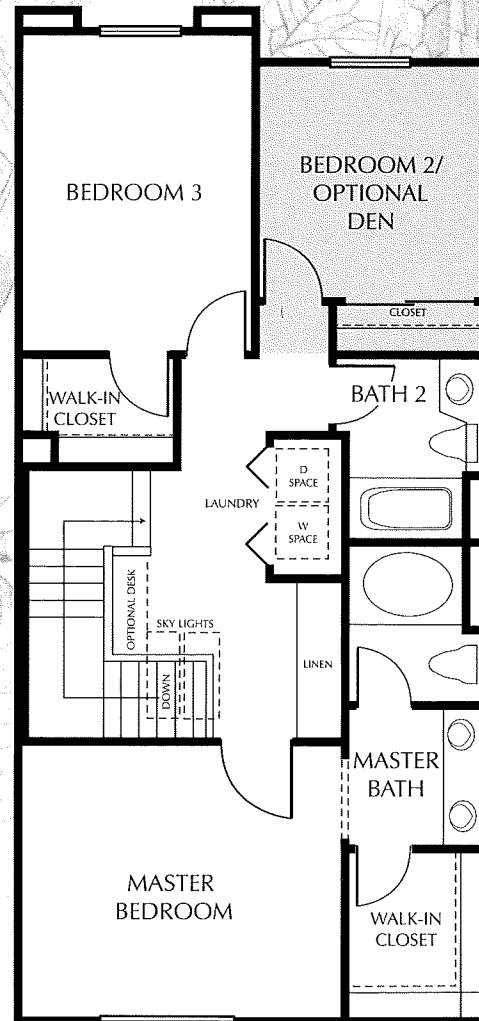


Plan One — Yorkshire

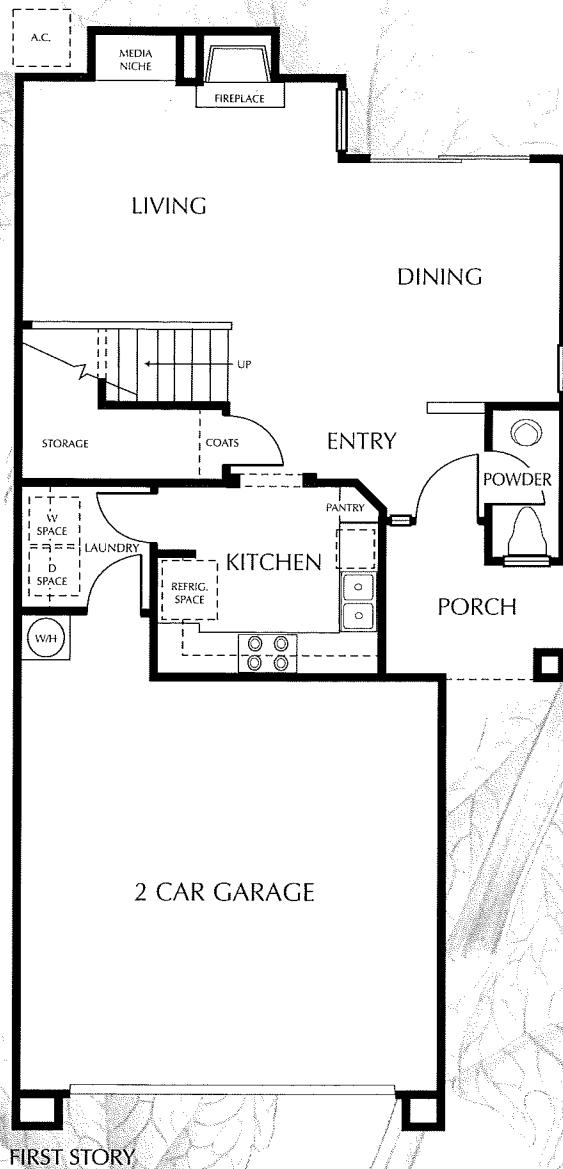
- 2 Stories • 3 Bedrooms • 2½ Baths
- Optional Den In Lieu Of Bedroom 2
 - Living Room • Dining Room
- Indoor Laundry Space • 2-Car Garage



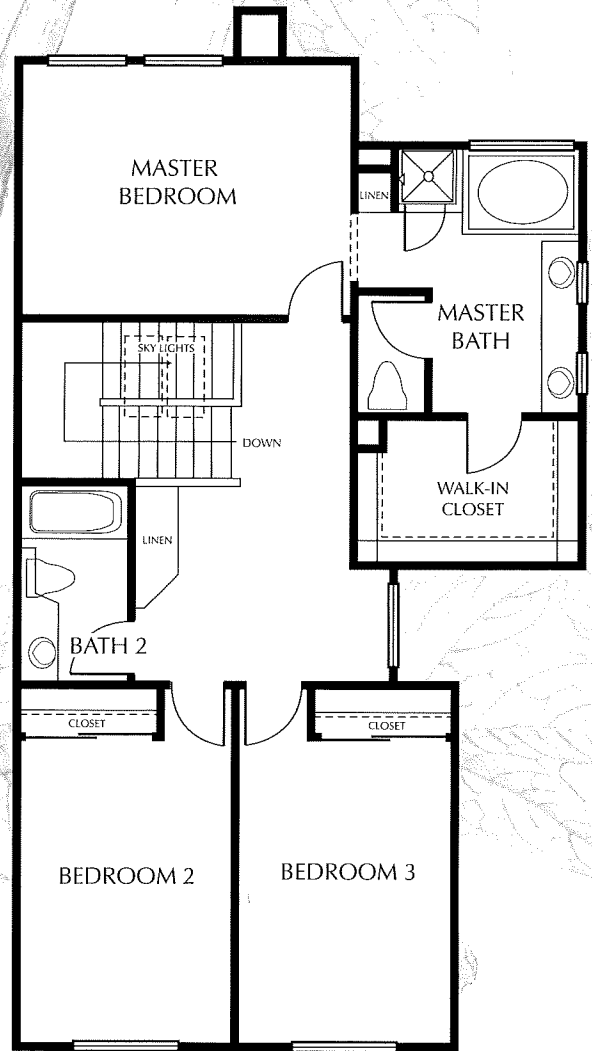
SECOND STORY
OPTIONAL DEN
AT BEDROOM 2



SECOND STORY



FIRST STORY



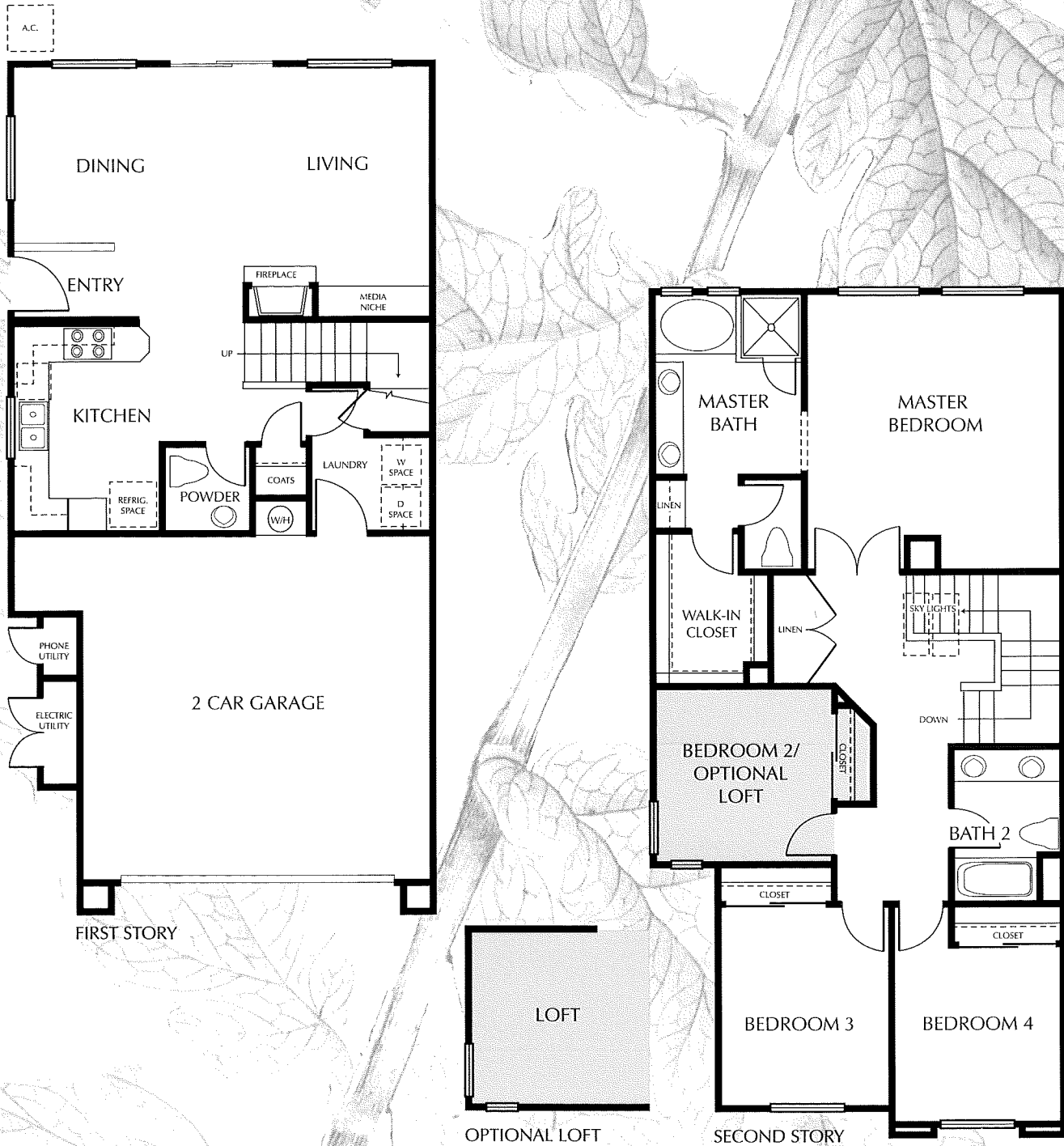
SECOND STORY

Plan Two — Mayberry

- 2 Stories • 3 Bedrooms • 2½ Baths
- Living Room With Fireplace
And Media Niche
- Dining Room • Indoor Laundry Room
- 2-Car Garage

Plan Three — Newcastle

- 2 Stories • 4 Bedrooms • 2½ Baths
- Living Room With Fireplace And Media Niche • Optional Loft In Lieu Of Bedroom 2 • Dining Room
- Indoor Laundry Room • 2-Car Garage



Builder Story.

The purchase of a new home is one of the biggest and most important decisions you and your family will ever make. You have a right to know all about the builder.

Beazer Homes USA, Inc. (NYSE-BZH) is one of the nation's very largest home builders, with regional offices and operations in 30 markets in the Southeast, Mid-Atlantic, Southwest, and South Central United States. Management in each region is composed of individuals with strong experience in local building and market trends.

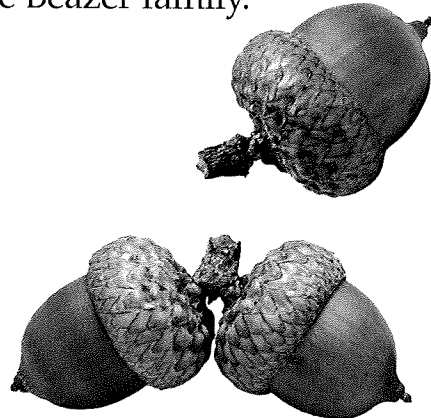
Each year, Beazer Homes and its subsidiaries build and sell homes to people who share a common goal: they expect to receive a new home representing an outstanding value.

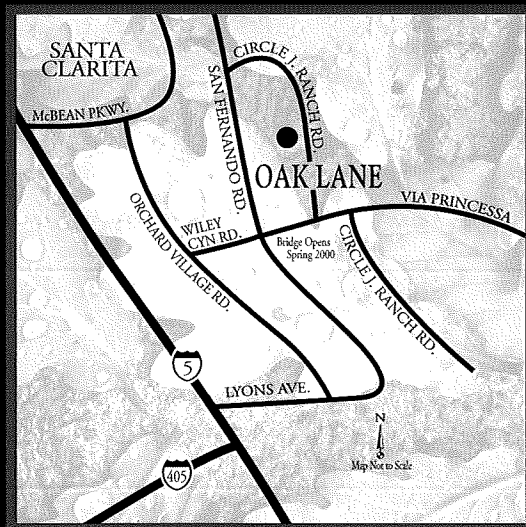
Beazer Homes has been carefully built on a tradition of excellence, providing the finest in planning, architectural design, and craftsmanship in every home we build.

We're extremely proud of every Beazer home, and are committed to maintaining our reputation as a caring, customer-oriented company. We hope you will choose to become an important part of the Beazer family.

Welcome home.

• H O M E S •
BEAZER





22705 Sundance Creek • Santa Clarita, CA 91350
(661) 288-1500 • www.beazer.com

• HOMES •
BEAZER



Features

The Lifestyle

- Maintenance-free, resort living
- Professionally landscaped and maintained common area
- Swimming pool, spa, and cabana in recreation center
- Park area
- Private patios

Peace of Mind

- Gated community
- No Mello-Roos tax assessments
- Metal, sectional, roll-up garage door with opener
- Night lighting on streets, walkways, and common areas
- Two-car, attached garage with direct access to your home
- Smoke detectors

Traditional Quality and Value

- Central air conditioning with automatic setback thermostat
- Dual-glazed, white frame windows throughout
- Dual-glazed sliding glass doors with lock
- Gas dryer hook-up in laundry area
- Double common area wall construction for sound control
- Thermostatically controlled, forced-air heating with pilotless ignition
- Energy-efficient water heater
- Cabinets in laundry room (Plans 2 and 3)

Beauty Inside Every Home

- Fireplace (Plans 2 and 3)
- Handsome, raised-panel interior doors
- Plush carpeting in living and dining rooms, bedrooms, closets, and halls
- Selection of easy-care vinyl flooring in kitchen and baths
- Designer-selected lighting fixtures
- Bright skylights
- Ceramic tile flooring in entry
- Telephone and cable pre-wired in family center and master bedroom
- Mirrored wardrobe doors

Gourmet Kitchens

- General Electric® appliance package including white-on-white gas range, five-cycle, two-level dish washer, and microwave oven
- Hand-set, ceramic tile countertops
- Recessed ceiling lights and under-cabinet fluorescent lighting
- Hand-crafted cabinets with laminate interiors, and adjustable shelves
- Pre-plumbed for ice maker at refrigerator space
- Waste disposal

Luxurious Master Suites

- Oval bathtub with separate shower (Plans 2 and 3)
- Spacious walk-in closet
- Cultured marble vanity
- Full-width mirror over pullman countertop
- Compartmentalized toilet



PLANS AND SPECIFICATIONS
SUBJECT TO CHANGE