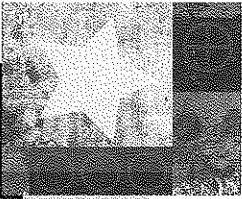
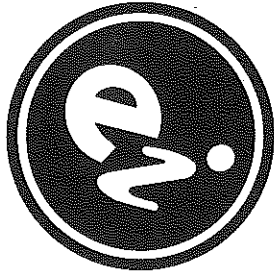


*Everything's
Included*



Northstar
AT STEVENSON RANCH

Everything's Included

First Impressions

Northstar

Home Choice #2

Home Choice #3

■ Architecturally coordinated exterior colors with fire-resistant concrete tile roofs	✓		
■ Sectional roll-up garage doors with openers for double garage door	✓		
■ Raised panel eight foot front entry doors	✓		
■ Complete side and rear yard fencing for privacy	✓		
■ Salt finish driveway	✓		
■ Gutters and downspouts in select locations	✓		
■ Front yard landscaping	✓		

Well Appointed Interiors

■ Pre-wired with RG6 for digital cable and satellite in all bedrooms and family room	✓		
■ Surround sound wiring at family room media area	✓		
■ Pre-wired with high speed category 5e telephone wiring	✓		
■ Silent touch Decora electrical switches	✓		
■ Dual forced air heating and air conditioning system with night set-back thermostat for energy savings	✓		
■ Radius corners at all walls and windows	✓		

Convenient Gourmet Kitchen

■ Slab granite countertop with full splash at cooktop	✓		
■ Beech cabinetry with vinyl interiors and adjustable shelves in upper cabinets	✓		
■ Quality GE™ white appliance package including: 36" gas cooktop	✓		
■ Built-in self cleaning double-electric oven	✓		
■ Built-in microwave over cooktop	✓		
■ Energy saving multi-cycle dishwasher	✓		
■ Built-in style refrigerator	✓		
■ Compartmental American Standard "Americast" sink with heavy duty waste control	✓		
■ Moen™ single-lever pull-out kitchen faucet	✓		
■ Refrigerator area plumbed with recessed valve for ice maker	✓		
■ Convenient under cabinet task lighting	✓		
■ Gourmet center island	✓		
■ Conveniently located storage pantry	✓		

Inviting Interiors

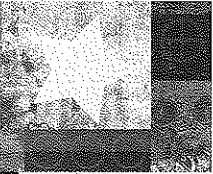
■ Ceramic tile entry flooring	✓		
■ Elegant wall-to-wall carpeting with a wide array of color selections	✓		
■ Art niches and custom radius wall corners	✓		
■ Traditional raised panel interior doors with decorative chrome hardware	✓		
■ Media area in family room	✓		
■ Light texture on walls and ceilings	✓		
■ Wood burning fireplace with glass panel doors	✓		
■ Stained stair handrail with white wood balusters and inside skirtboards	✓		
■ Ceiling fan with separate switch in all bedrooms and family room	✓		
■ Sherwin Williams® two-tone paint	✓		
■ Architecturally pleasing door casings and wall baseboards	✓		
■ Wood window sill and apron trim on most windows	✓		

Luxurious Master Bedroom Suite and Bath

■ European style beech cabinetry with ceramic tile countertop	✓		
■ Dual vitreous china vanity sinks with buyer preferred Moen™ chrome fixtures	✓		
■ Compartmental water closet with elongated water-saving toilet	✓		
■ Generous walk-in closets with double-sided mirrored closet door	✓		
■ Luxurious jetted tub and separate shower with ceramic tile walls and floor	✓		
■ Decorator selected vanity lighting	✓		
■ Beveled and recessed mirrors at vanity sinks	✓		

Bonus Features

■ Squeak resistant upper floors	✓		
■ Smoke detectors throughout	✓		
■ Vinyl Low E dual glazed windows and sliding doors	✓		
■ Energy efficient 50 gallon water heater	✓		
■ Water saving toilets	✓		
■ Laundry area with gas hook-up, cabinets over the washer and dryer area, and tiled countertop	✓		
■ Full weather-stripping on most exterior doors	✓		
■ Low voltage exterior address light	✓		
■ Gas stub in rear yard for future barbecue	✓		
■ Exterior outlet with inside switch for holiday lighting	✓		
■ 200 AMP electrical panel	✓		



Northstar

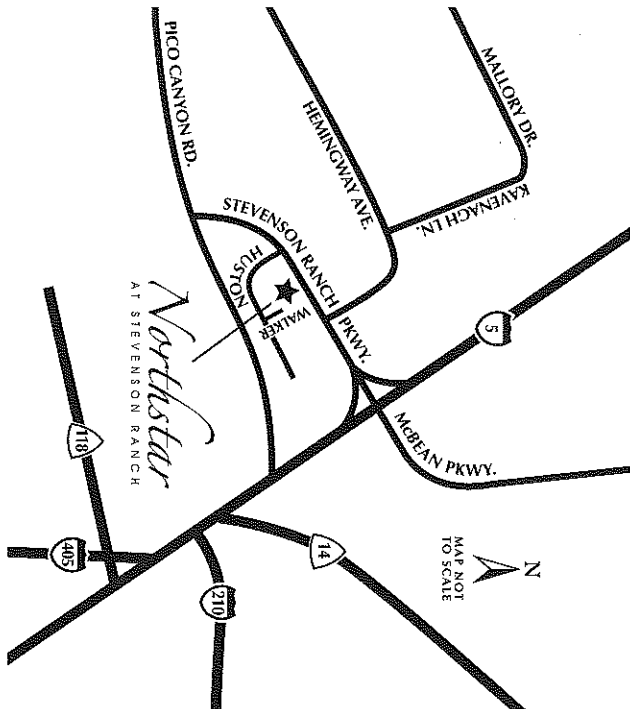
AT STEVENSON RANCH

www.GreystoneHomes.com

25619 N. Walker Place, Stevenson Ranch, California 91381

(661) 255-6797

(661) 255-9412 fax



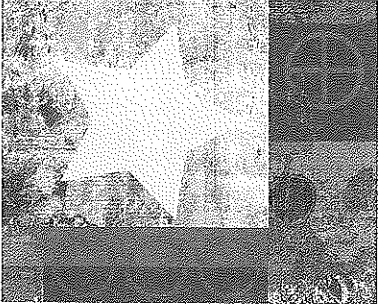
VALUES

PARKSIDE
AT STEVENSON RANCH



A LEBAN RANCH HOMEOWNER

In an effort to continuously improve our products, Greystone Homes reserves the right to change floor plans, elevations, specifications, materials and prices without prior notice. All plans, landscaping, floor plans, renderings and maps are an artist's conception, and are not intended to be an exact depiction of other building or landscaping. Variations in the floor plans and elevations to exist and square footages are approximate and will vary. Window locations and sizes as well as specific detailing may vary with different locations and elevations. Color and size variations may occur. The prices of lot homes, included features, and suitable locations are subject to change without notice. Please see the actual home purchase agreement for additional information, disclosures, and disclosures relating to the home and its features. © 2003 Greystone Homes, Inc. The location maps in the models, including and not limited to landscaping, outdoor coverings, accent built covers, walkways, walls, and parking, special features, special depicting and floor coverings, and lighting fixtures, pool covers, landscaping and certain fences are for suggestion and display only and are not included in the purchase price. Please see New Home Consistent for details. All commitments with homebuyer's associations have been established to enhance the long-term value and integrity of the community. The association provides a vehicle for maintaining community common areas. The association is financially supported by all homeowners of said community. Membership is mandatory. If a Landscape Maintenance District should occur within said community, homeowners automatically participate to support local schools, water and landscape districts. 4/03



Northstar

AT STEVENSON RANCH

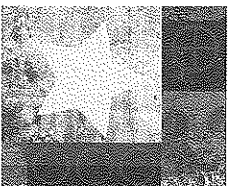
PRELIMINARY

Priorities. There are few things in life where compromising is not an option. You've stayed your course as you pursue the goals you most value.

Now you've reached a special moment in life. You've found Northstar, a very distinguished neighborhood with the one address you've always desired - Stevenson Ranch. Other communities aspire to be like this, to possess its quality lifestyle, comforts and conveniences, and ideal location in Southern California.

Greystone Homes understands all too well the needs of today's families. Gracious and roomy with a high level of outstanding standard features, a Northstar home is a promise kept.

Follow Northstar home to Stevenson Ranch. The dream of a beautiful life for you and your family is within reach.



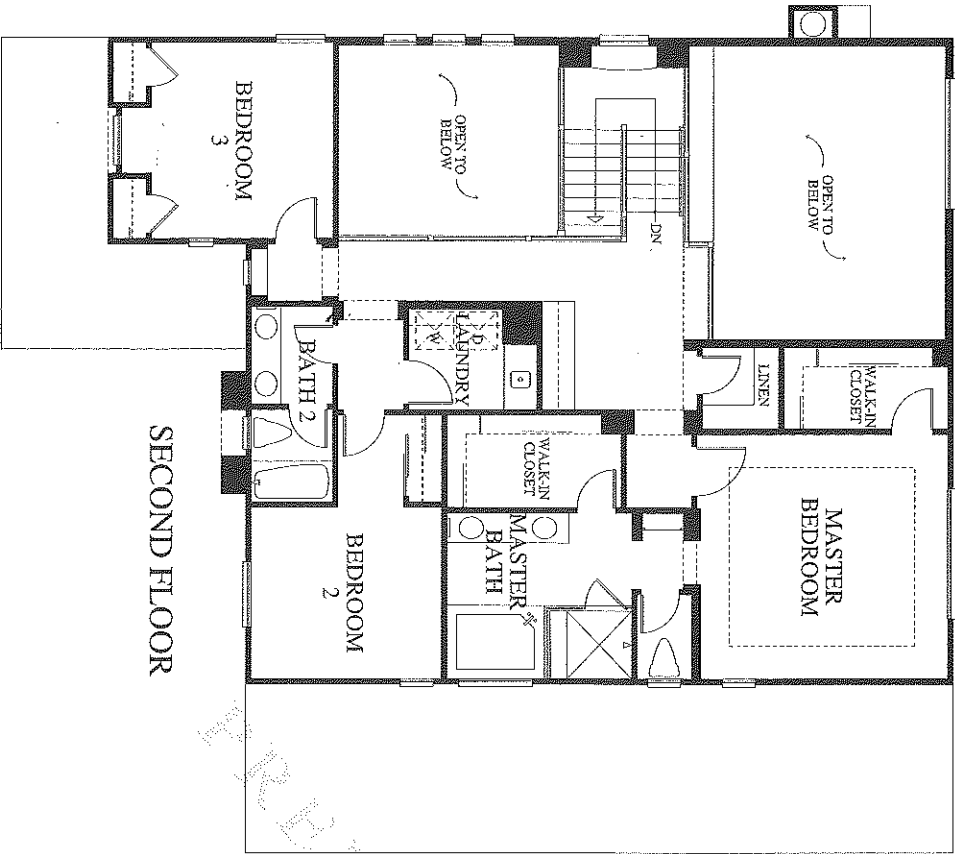
Northstar
AT STEVENSON RANCH

Home One

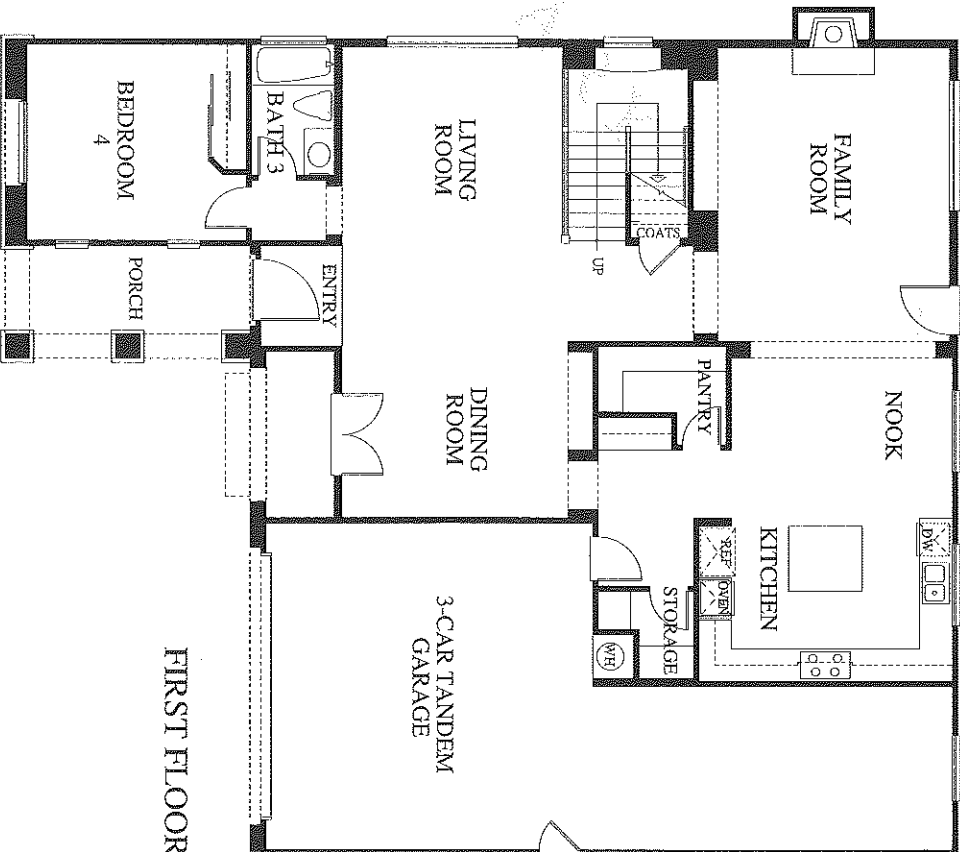
REVERSE

The dramatic interior architecture will easily impress as an abundance of natural light fills the vaulted two-story family and living rooms. And the kitchen is so well-designed with spacious counters that even the kids hang around to help with dinner. Life is good.

4 BEDROOMS 3 BATHROOMS 3-CAR TANDEM GARAGE 2,877 SQUARE FEET

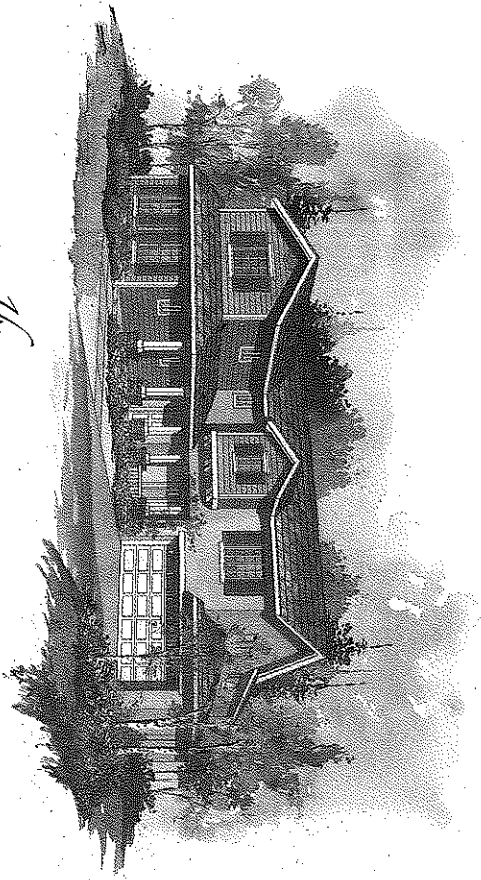


SECOND FLOOR

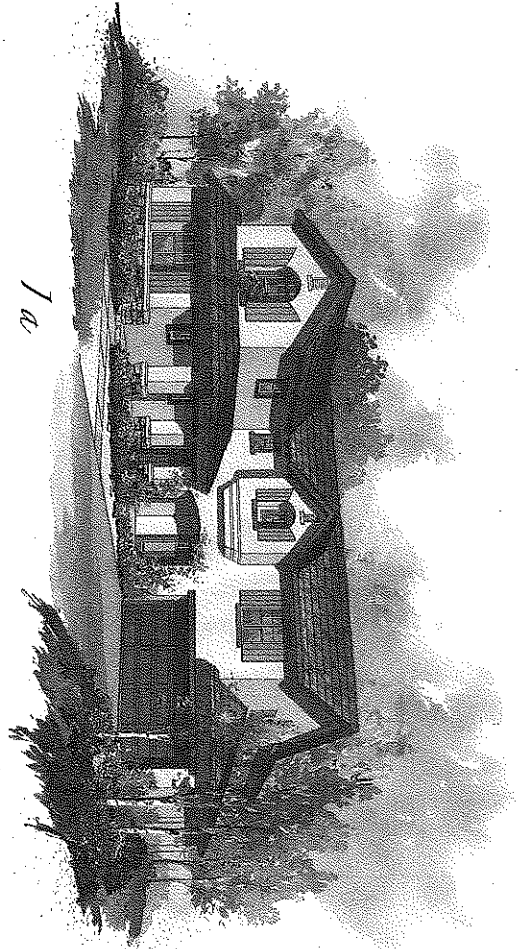


FIRST FLOOR

76

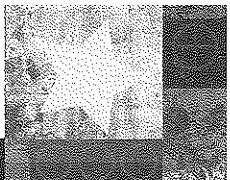


7a



7c



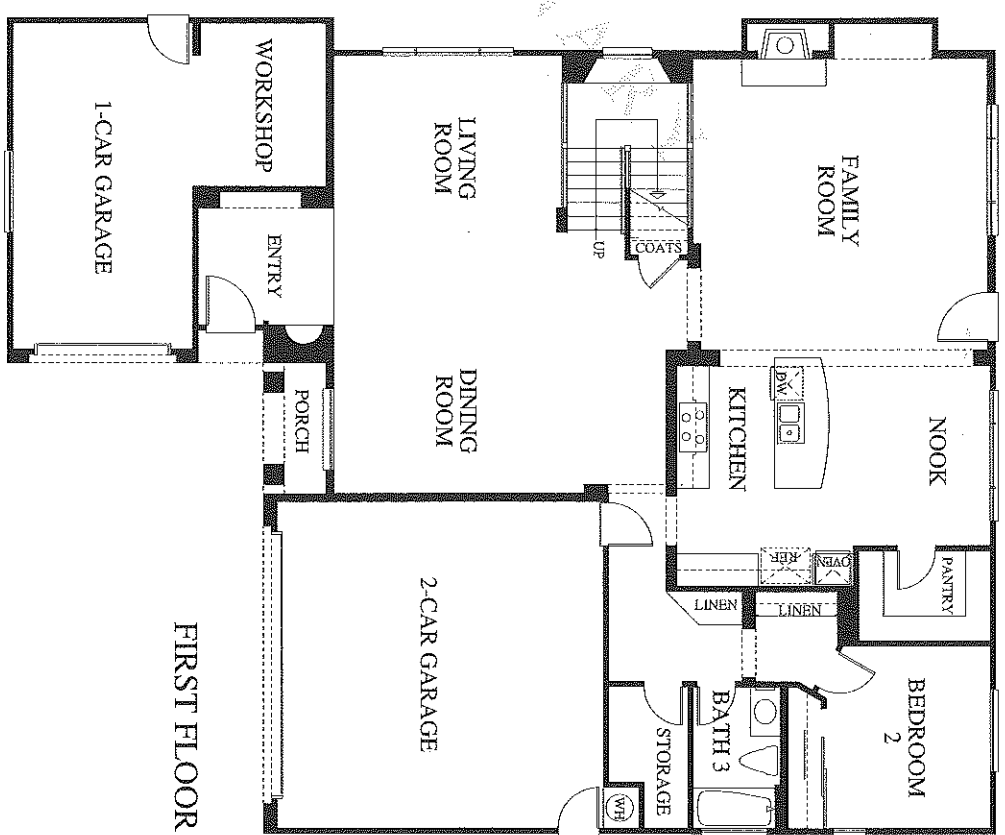
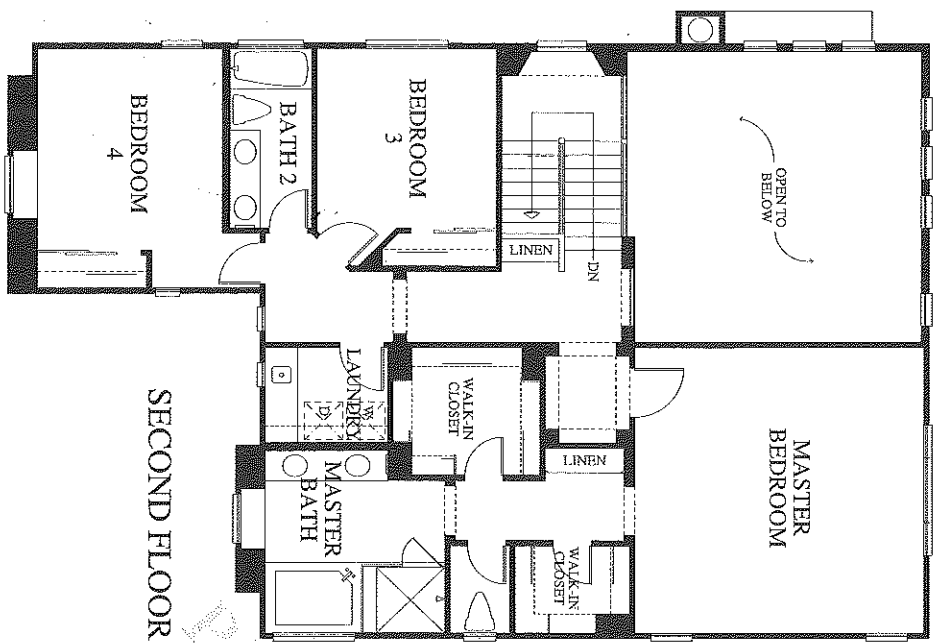


Home Tour

REVERSE

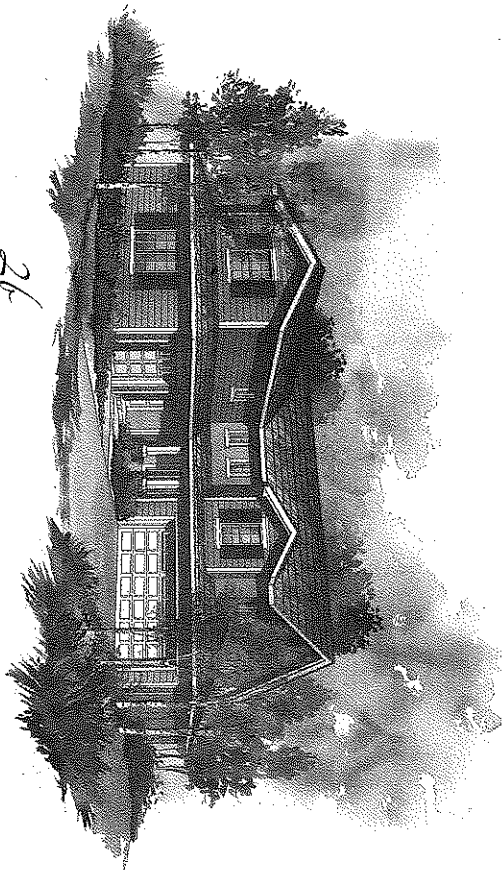
All the needs of every day life are beautifully accommodated. It's the little details that count — a workshop area, large walk-in pantry, kitchen island with eating bar and plenty of storage. Nothing has ever come closer to perfection.

4 BEDROOMS 3 BATHROOMS 3-CAR GARAGE 2,985 SQUARE FEET

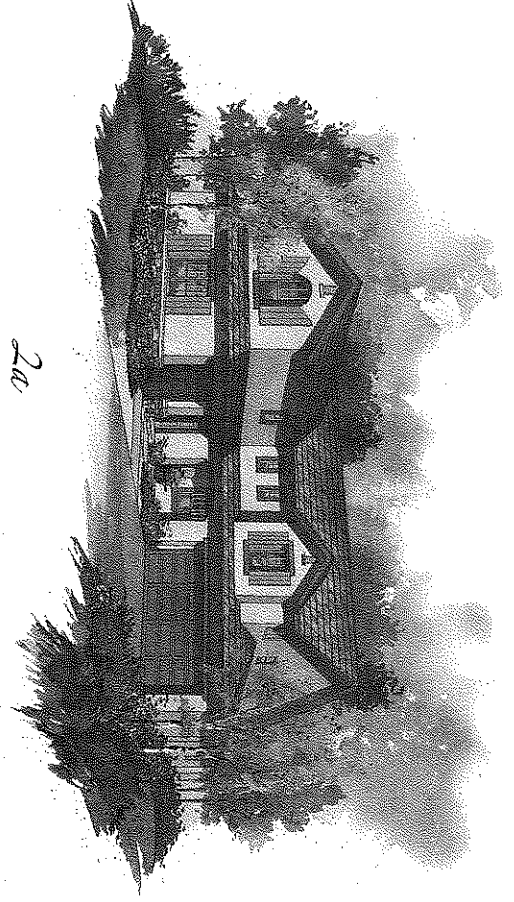


In an effort to continuously improve our product, Greystone Homes reserves the right to change floor plans, specifications and materials without prior notice. Variations in floor plans, windows and elevations do exist; square footage is approximate and will vary. 4/03

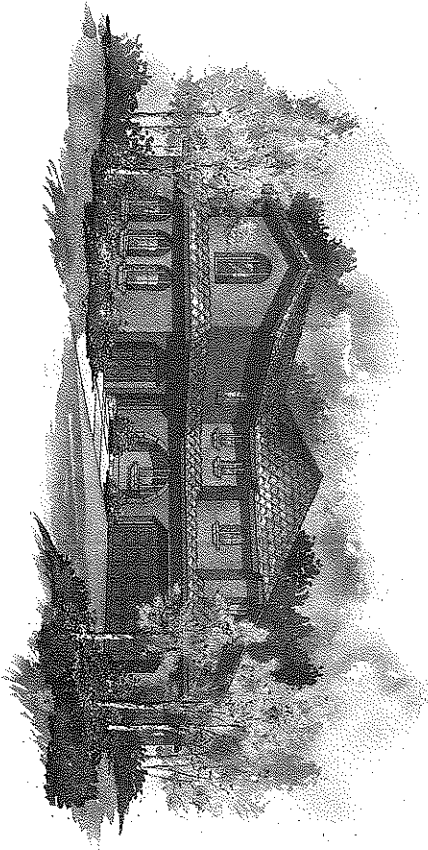
26



24



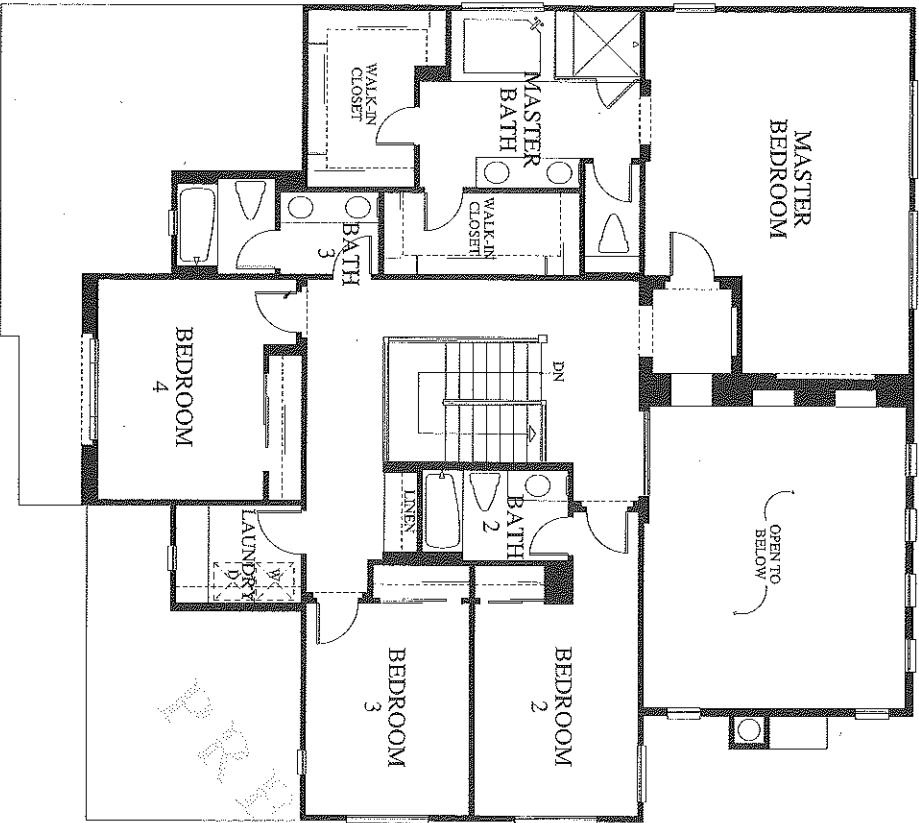
20



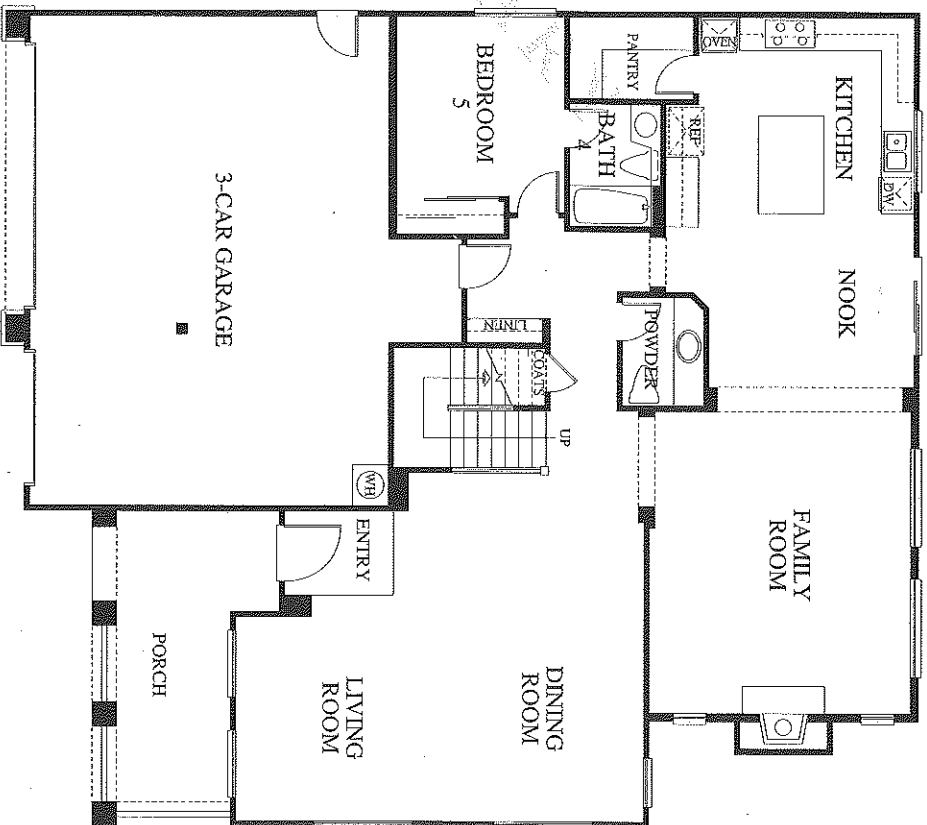
Home Three

Grand beyond imagination. This is a home with style and livability. The retreat-like master suite is rejuvenating after entertaining a large family reunion. There is so much room and comfort that your guests want to stay forever.

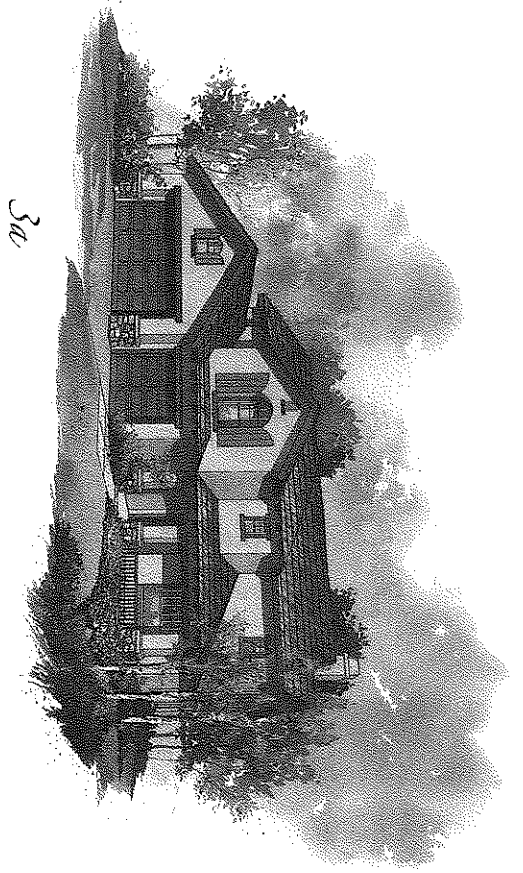
5 BEDROOMS 4 1/2 BATHROOMS 3-CAR GARAGE 3,311 SQUARE FEET



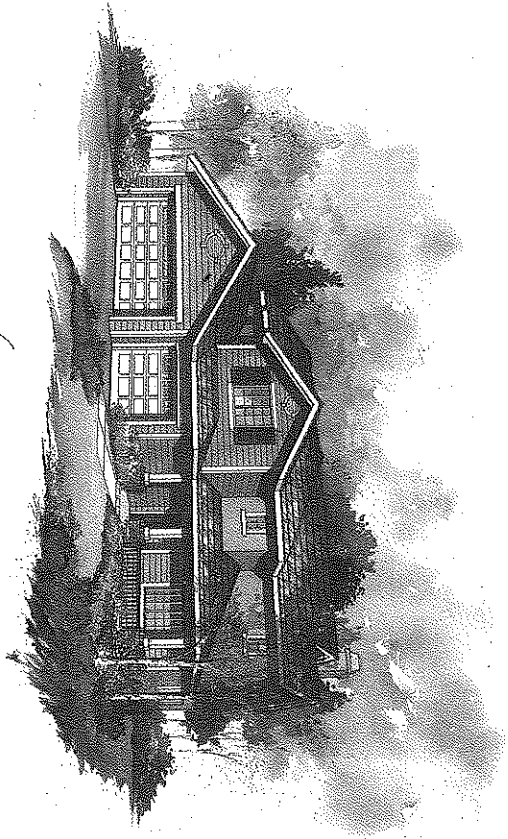
SECOND FLOOR



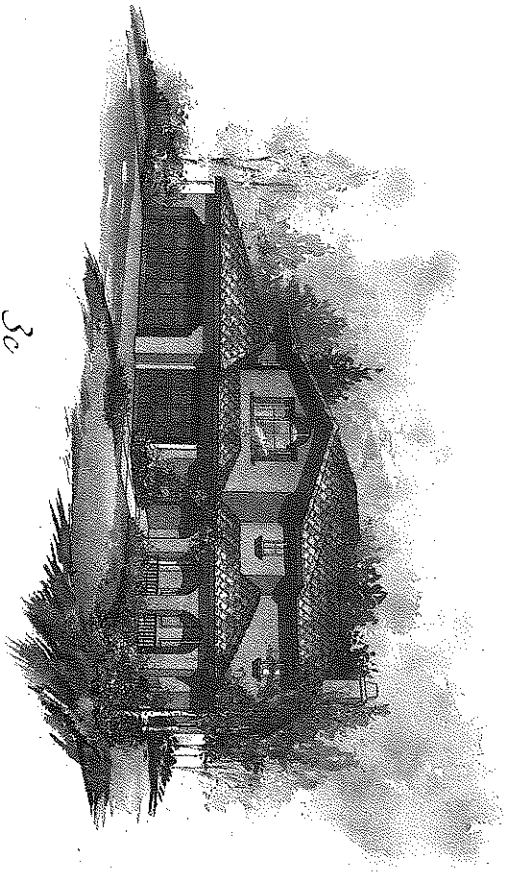
FIRST FLOOR



32



36



30

Standard Features

PRELIMINARY

Deluxe Features

- Architecturally coordinated exterior colors
 - Fire-resistant concrete tile roofs
 - State-of-the-art structural components
 - Sectional roll up garage door with openers
 - Decorator selected exterior lighting
 - Chrome-finish entry hardware and chrome interior hardware
 - Gas stub in rear yard for future barbecue
 - Front yard landscaping
 - Salt finish driveway
 - Sherwin Williams® two tone paint
 - Complete side and rear yard fencing for privacy
 - Gutters and downspouts in select locations
 - Exterior outlet with inside switch for holiday lighting
- ## Stylish Interiors
- Ceramic tile entry flooring
 - Traditional raised panel interior doors
 - Stained stair handrail with white wood balusters and inside skirboard
 - Wood burning fireplace with glass panel doors
 - Recessed accent lighting
 - Art niches and custom radius wall corners
 - Architecturally pleasing door casings and wall baseboards
 - Elegant wall-to-wall carpeting with a wide array of color selections
 - Vinyl flooring in kitchen and laundry
 - Light texture on walls and ceilings
 - Media area in family room
 - Radius corners at all walls and windows
 - Wood window sill and apron trim on most windows

Spacious Kitchens

- Gourmet center island
- Slab granite countertop with full splash at cooktop
- Beech cabinetry with vinyl interiors and adjustable shelves in upper cabinets
- Refrigerator area plumbed with recessed valve for icemaker
- Convenient under cabinet task lighting
- Conveniently located storage pantry
- Moen™ single-lever pull-out kitchen faucet
- Compartmental American Standard Americast sink with heavy-duty waste control
- Quality GE™ white appliances including:
 - 36" gas cooktop
 - Built-in self-cleaning double electric oven
 - Built-in microwave over cooktop
 - Energy saving multi-cycle dishwasher
 - Built-in style refrigerator

Elegant Master Bedroom Suite and Bath

- European Style beech cabinetry with ceramic tile countertop
- Dual vitreous china vanity sinks
- Moen™ chrome fixtures
- Recessed and beveled mirrors at vanity sinks
- Decorator selected vanity lighting
- Luxurious jetted tub and separate shower with ceramic tile walls and floors
- Compartmental water closet with elongated toilet
- Double-sided mirrored closet doors
- Generous walk-in closets

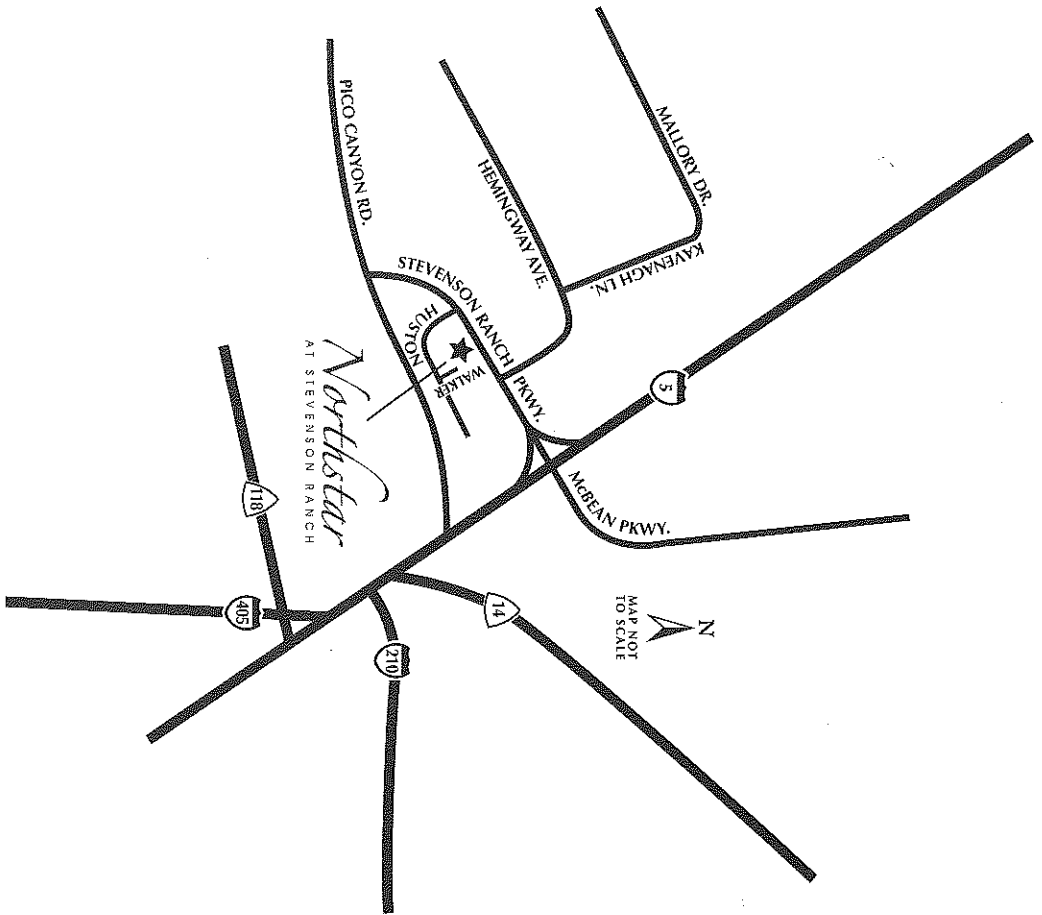
Special Features

- RG6 for digital cable and satellite in all bedrooms and family room
- High-speed category 5e telephone wiring
- Surround sound wiring at family room media area
- Silent touch Decora electrical switches
- Ceiling fan with separate switch in all bedrooms and family room
- Smoke detectors throughout for fire safety
- Squeak resistant upper floors
- Gas hook-up in laundry area with upper cabinets over washer and dryer area and tiled countertop
- 200 AMP electrical panel

Energy Efficient Features

- Dual forced air heating and air conditioning system with night setback thermostat for energy savings
- Energy efficient 50 gallon water heater
- Full weather-stripping on most exterior doors
- Water saving toilets for energy conservation
- Low voltage exterior address light
- Vinyl Low E dual glazed windows and sliding doors

In an effort to continuously improve our product, Creststone Homes reserves the right to change floor plans, elevations, specifications, materials and prices without prior notice. All plans, landscaping, floor plans, renderings and maps are an artist's conception, and are not intended to be an exact depiction of either building or landscaping. Variations in the home purchase agreement for additional information, disclosures, and declarations relating to the home and its features. © 2003 Creststone Homes, Inc. The decorative items in the model, including and not limited to furnishings, window coverings, accent paint colors, wallpaper, molding and paneling, special mirrors, special carpeting and floor coverings, and lighting fixtures, patio covers, landscaping and hardscaping and certain fences are for suggestion and display only and are not included in the purchase price. Please see New Home Consultant for details. All communities with homeowners' associations have been established to enhance the long-term value and integrity of the community. The association provides a vehicle for maintaining community common areas. The association is financially supported by all homeowners of said community. Membership is automatic. If a Landscape Maintenance District should occur within said community, homeowners automatically participate to support local schools, water and landscape districts. 4/03



Northstar

AT STEVENSON RANCH

www.GreystoneHomes.com

25619 N. Walker Place, Stevenson Ranch, California 91381

(661) 255-6797

(661) 255-9412 FAX

PARKSIDE
AT STEVENSON RANCH

