

at Pacific Crest
Legends
Legends of Pacific Crest

Live up to your dreams



Once upon a time is here



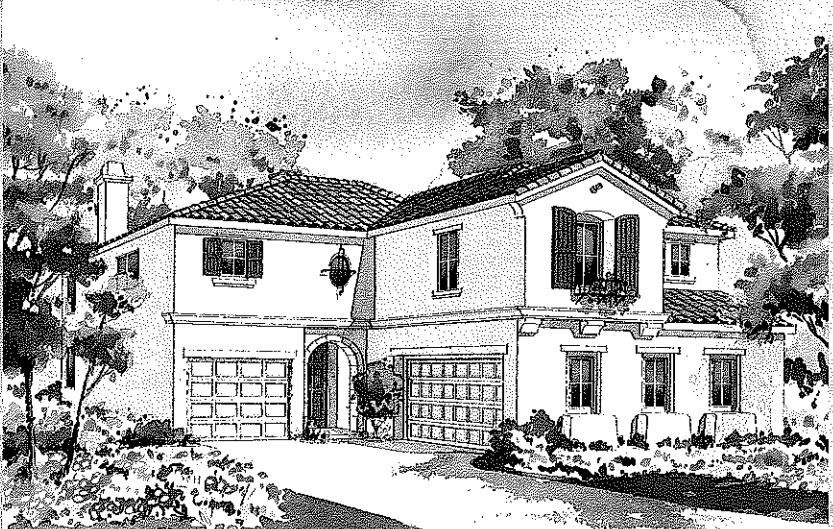
Stories are told of a wondrous place where everyone lives happily ever after. Where a fabled lifestyle greets you each morning. And a touch of enchantment blesses each night. It's a legendary land that's now waiting to enrich you, and all who choose to call it home.

Welcome to Legends at Pacific Crest, a spectacular new neighborhood that lives up to all your dreams and provides a welcoming sanctuary for each and every day. An air of hospitality and graciousness welcomes friends and nurtures families.

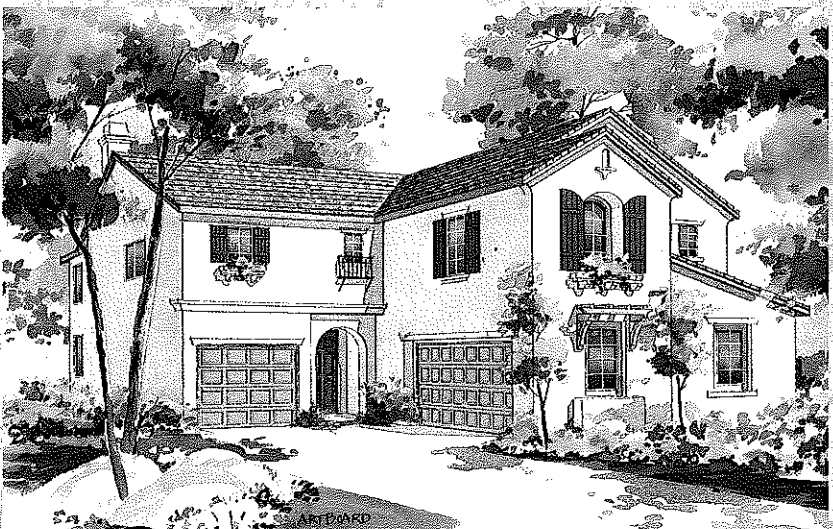
The elegant residences of Legends offer unparalleled comfort and superb design detail. The interiors are spacious and carefully thought out for your lifestyle enhancement with beautiful appointments that enhance every room.

Come discover the magic of Legends. You'll find that "Happily Ever After" isn't the ending of a story, but the beginning of your new life.

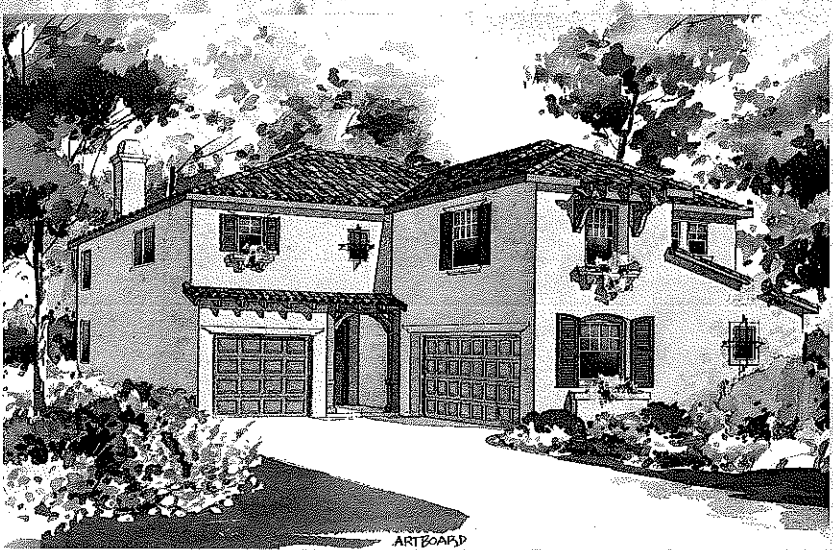
Residence One
 4 Bedrooms, 3 Baths
 Great Room, Loft
 2 plus 1 Space Garage*
 Approximately 2,560 sq. ft.



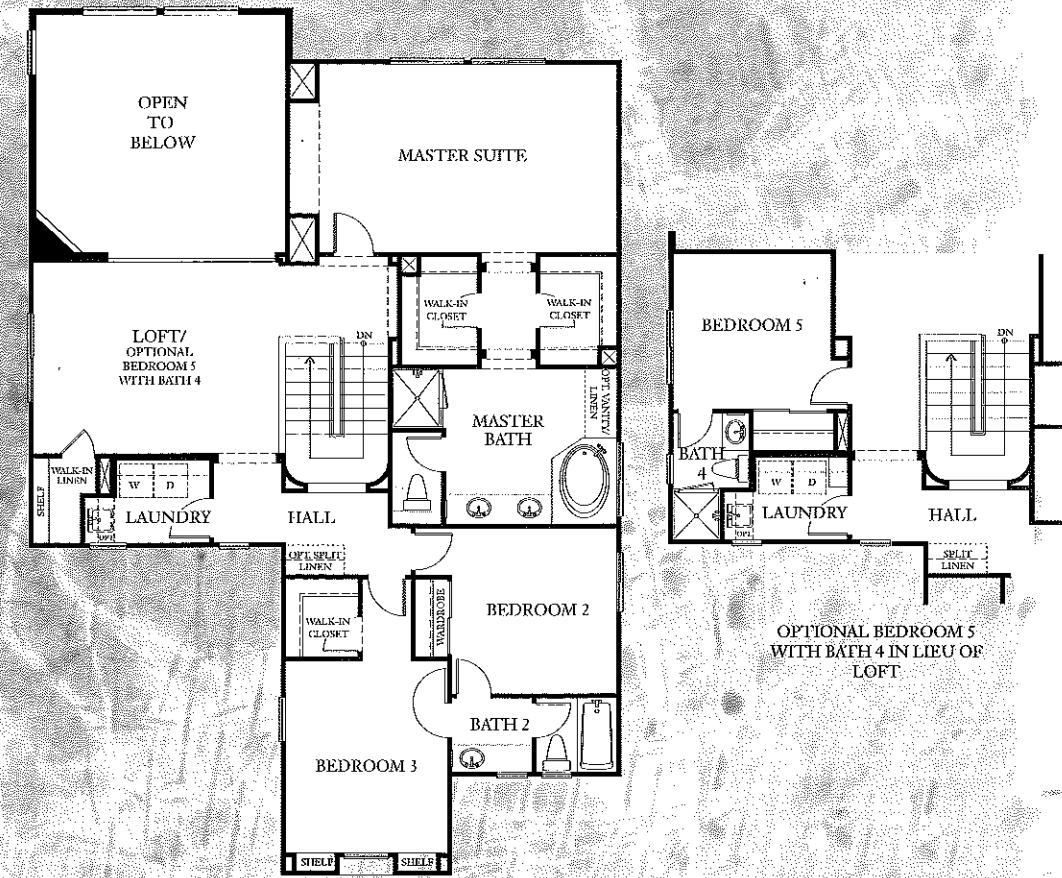
1A



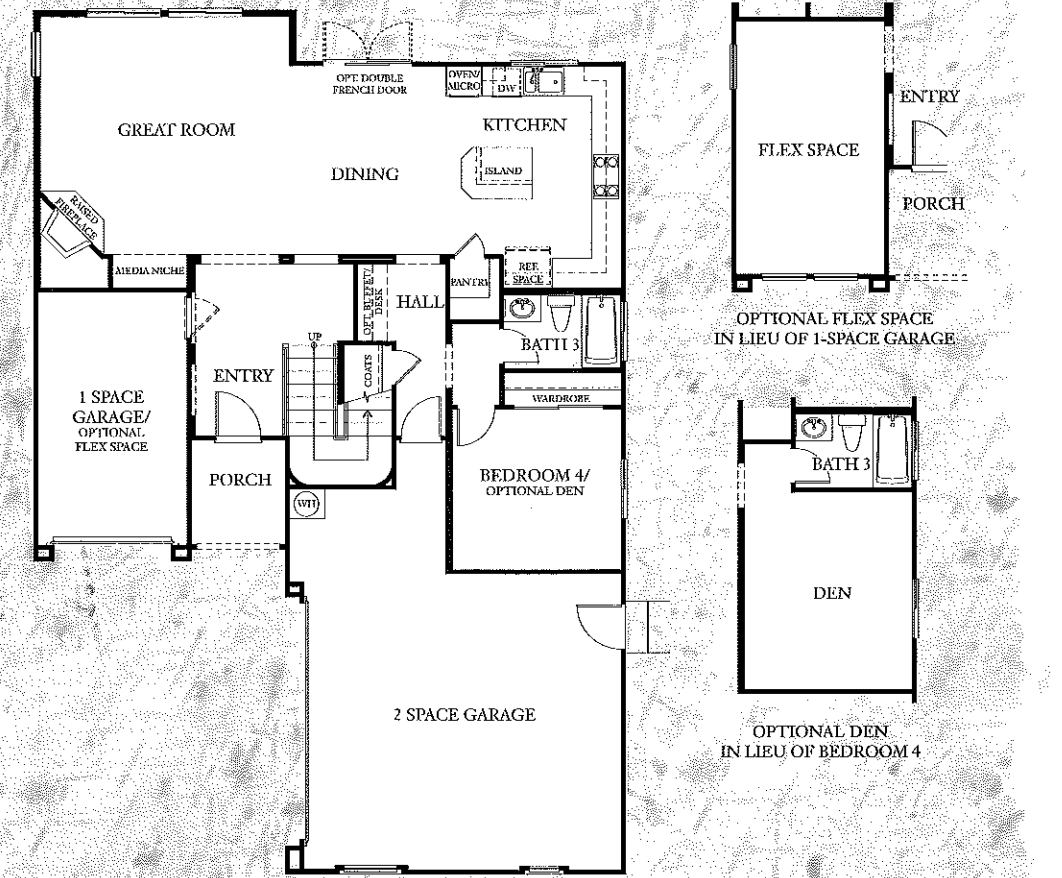
1B



1C



SECOND FLOOR



FIRST FLOOR

Centex Homes reserves the right to change floorplans, specifications, and prices without prior notice. Such changes may not always be reflected in our models. The exterior color scheme of each home has been professionally pre-selected and coordinated and is not subject to change. Window and deck locations or sizes may vary. Garage/parking configurations may vary by plan/elevation. All square footages are approximate. All renderings, floor plans and maps are artists conception and are not intended to be an actual depiction of the building, fencing, walks, walls, driveways or landscaping. *3rd garage space may not be large enough to accommodate a full size vehicle. Please see our Sales Representative should you have any questions.

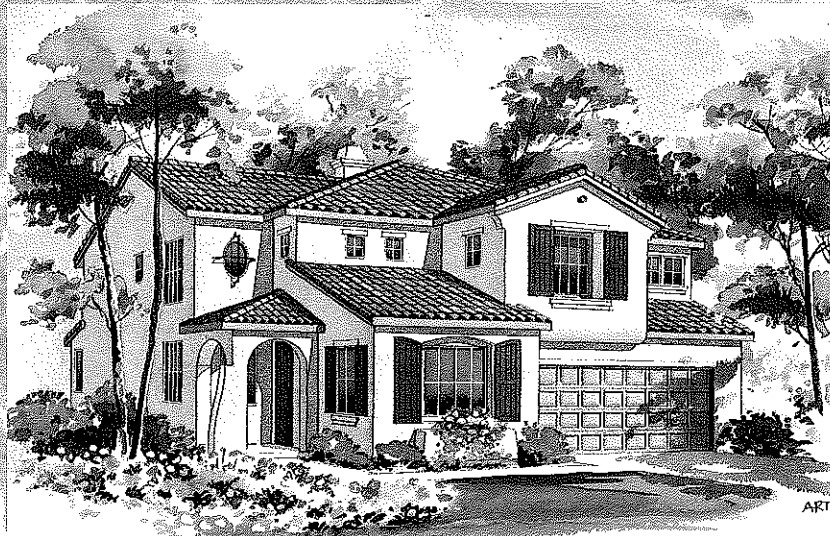
Residence Two

4 Bedrooms, 3 Baths

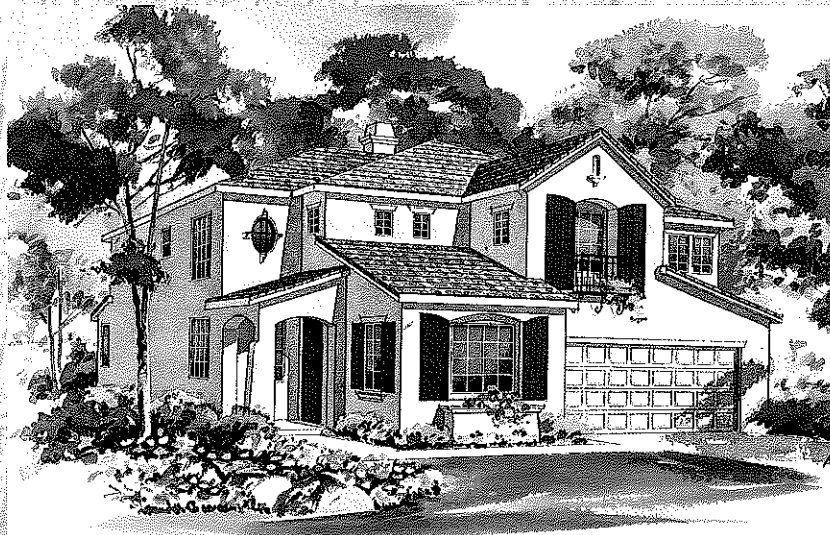
Living Room, Dining Room, Family Room, Loft,

3 Space Tandem Garage*

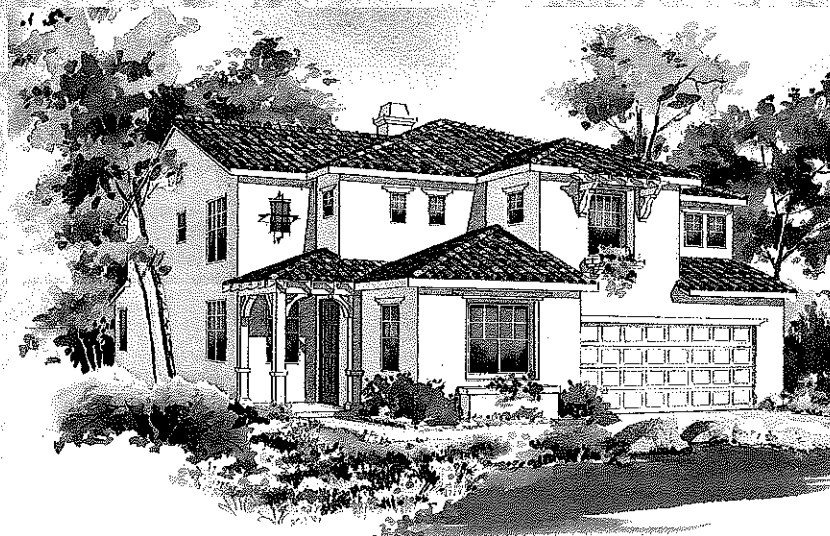
Approximately 2,682 sq. ft.



2A

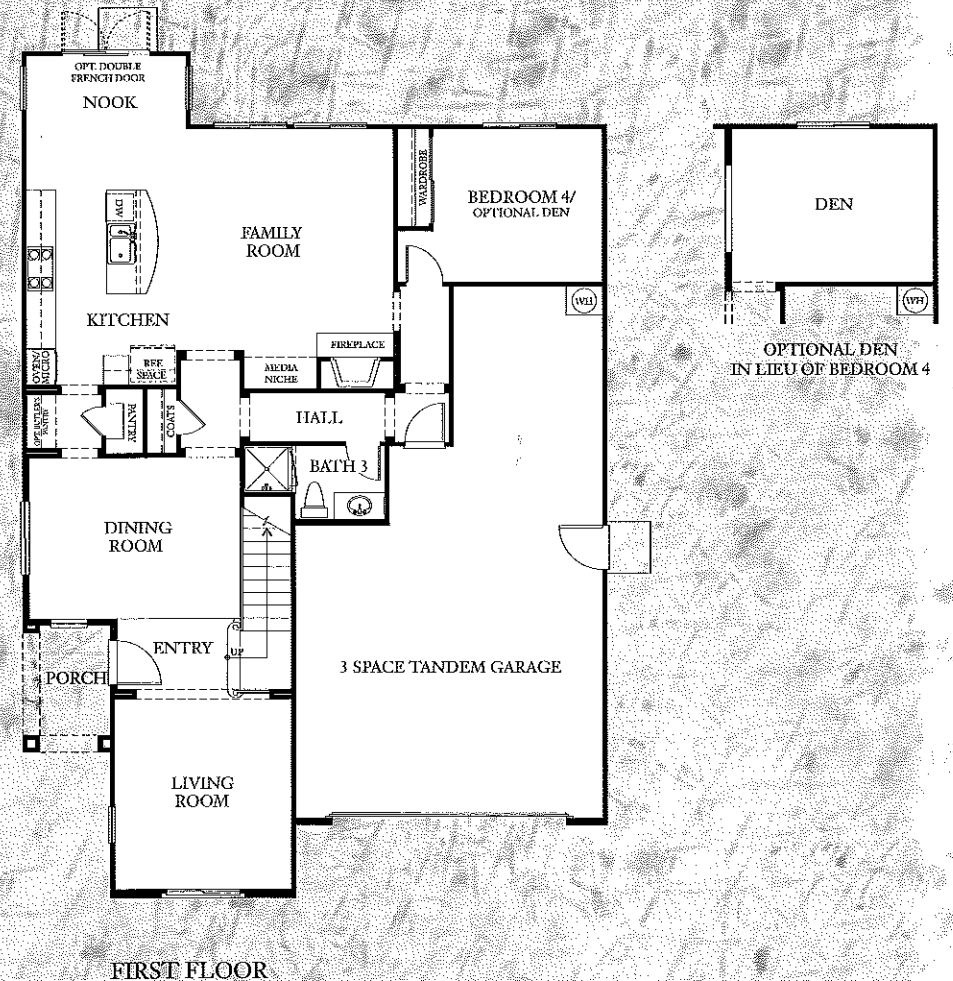
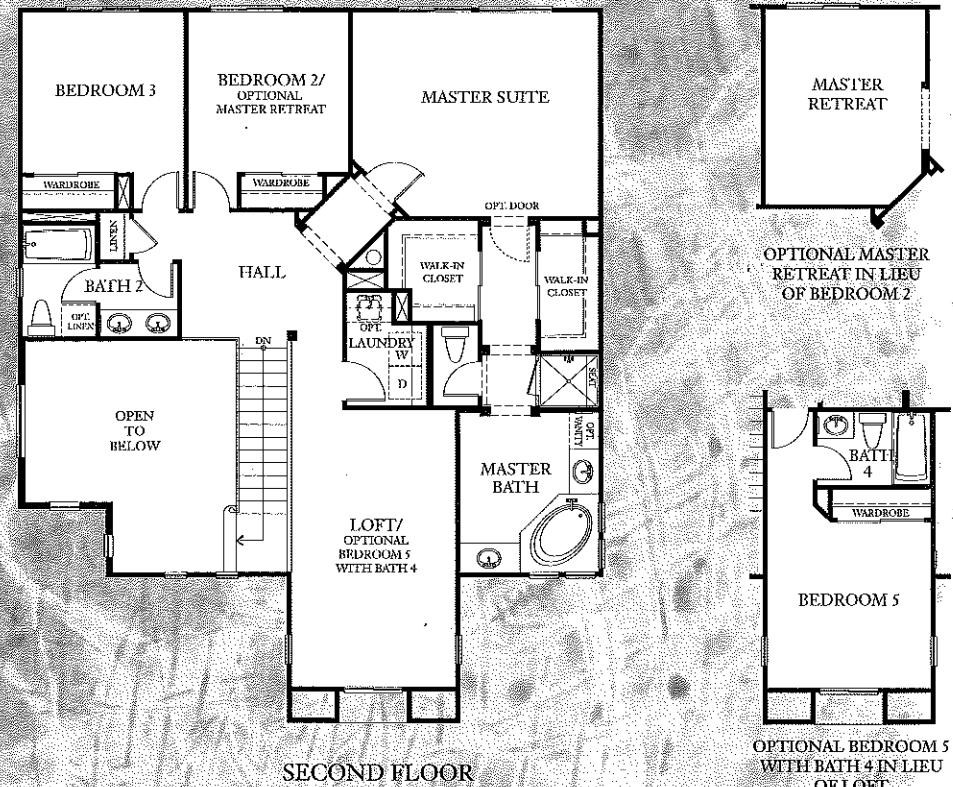


2B



2C

Centex Homes reserves the right to change floorplans, specifications, and prices without prior notice. Such changes may not always be reflected in our models. The exterior color scheme of each home has been professionally pre-selected and coordinated and is not subject to change. Window and deck locations or sizes may vary. Garage/parking configurations may vary by plan/elevation. All square footages are approximate. All renderings, floor plans and maps are artists conception and are not intended to be an actual depiction of the building, fencing, walks, walls, driveways or landscaping. *3rd garage space may not be large enough to accommodate a full size vehicle. Please see our Sales Representative should you have any questions.



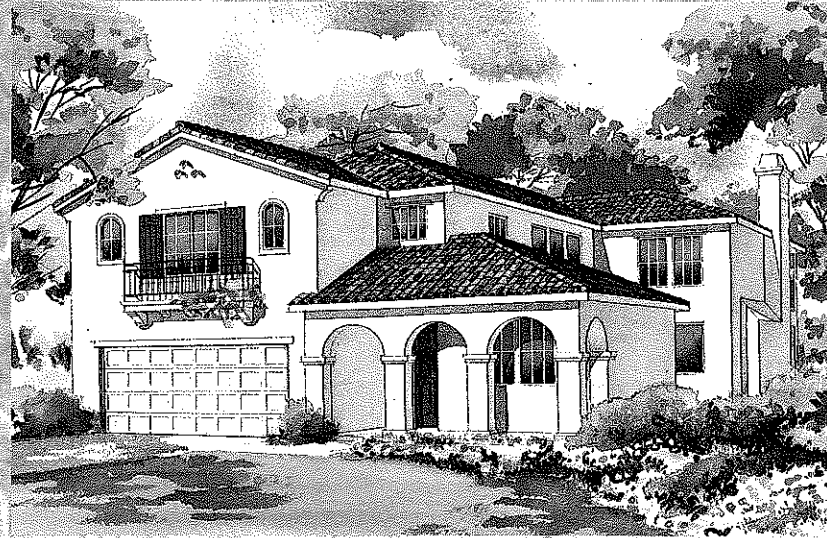
Residence Three

4 Bedrooms, 3 Baths

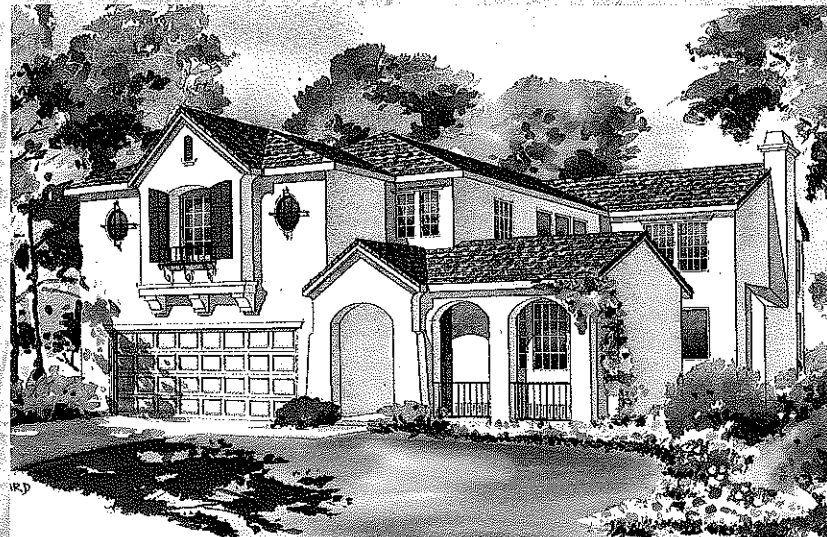
Living Room, Dining Room, Family Room, Loft

3 Space Tandem Garage*

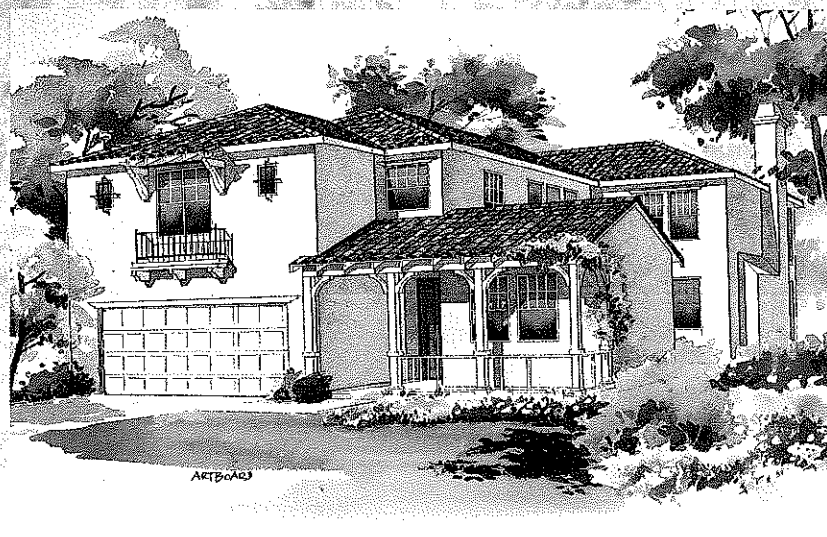
Approximately 2,876 sq. ft.



3A

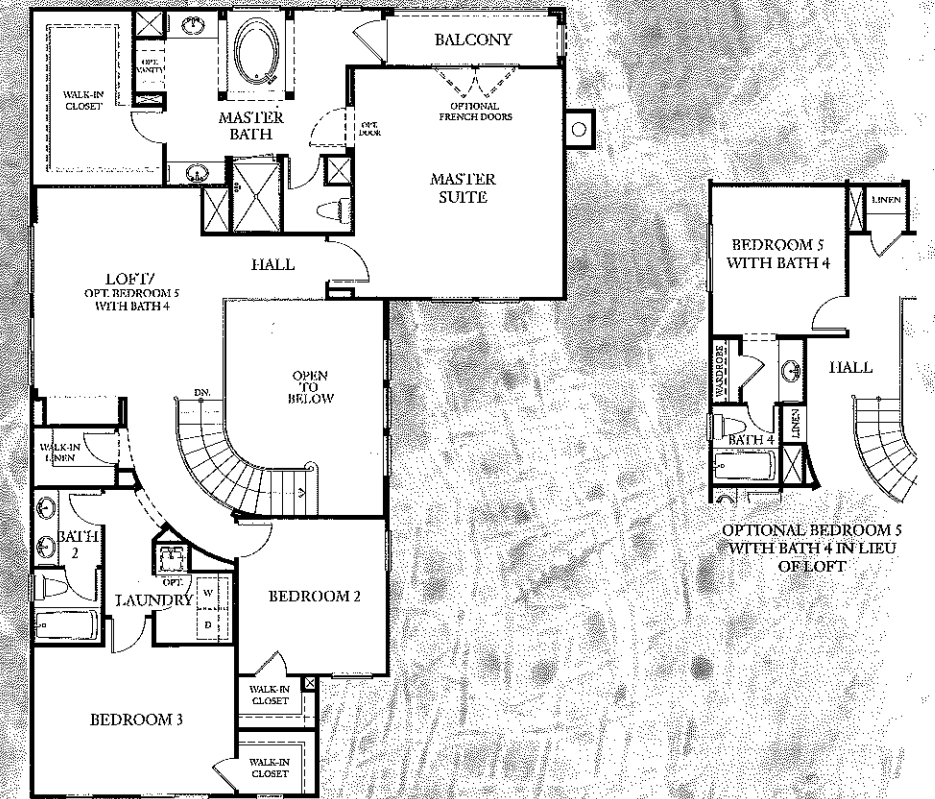


3B

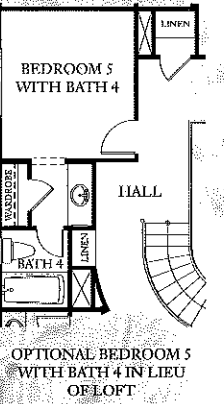


3C

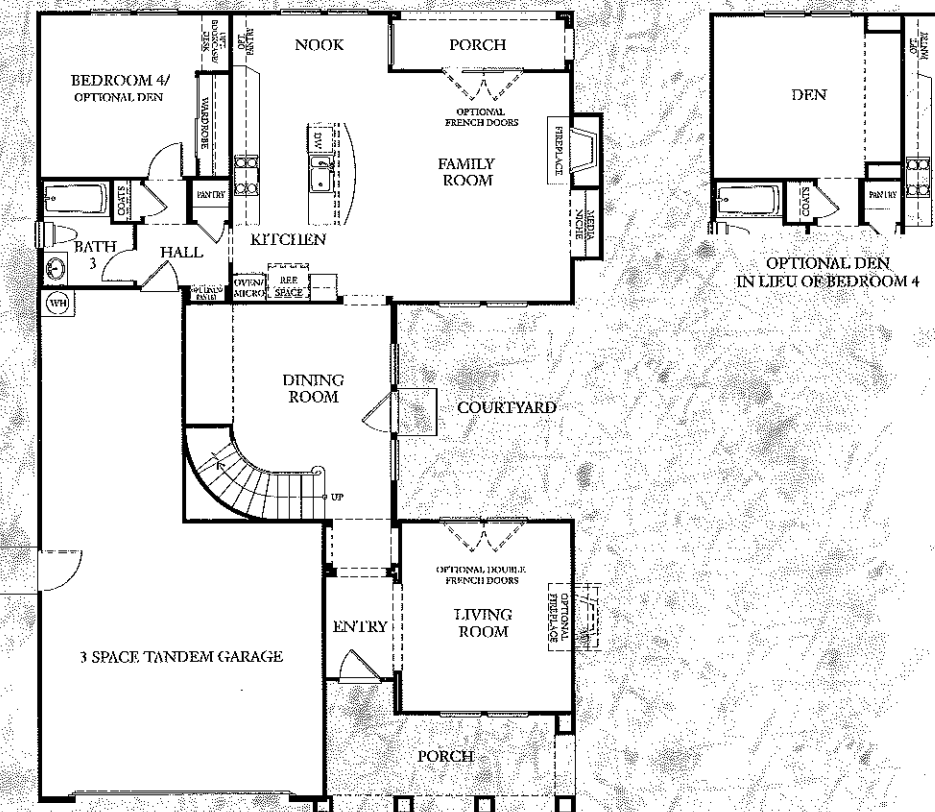
Centex Homes reserves the right to change floorplans, specifications, and prices without prior notice. Such changes may not always be reflected in our models. The exterior color scheme of each home has been professionally pre-selected and coordinated and is not subject to change. Window and deck locations or sizes may vary. Garage/parking configurations may vary by plan/elevation. All square footages are approximate. All renderings, floor plans and maps are artists conception and are not intended to be an actual depiction of the building, fencing, walks, walls, driveways or landscaping. *3rd garage space may not be large enough to accommodate a full size vehicle. Please see our Sales Representative should you have any questions.



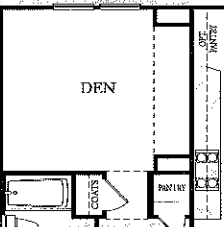
SECOND FLOOR



OPTIONAL BEDROOM 5 WITH BATH 4 IN LIEU OF LOFT



FIRST FLOOR



OPTIONAL DEN IN LIEU OF BEDROOM 4

Welcome to Legends at Pacific Crest

Architecturally distinctive exteriors

- Professionally-selected exterior color schemes
- 2 plus car garages with roll-up sectional doors and automatic opener
- Drywalled garages
- Fire-resistant concrete tile roof
- Architecturally distinctive entry doors
- Rear and side yard slump stone wall and/or tublar steel fencing
- Milgard windows with clear Low E glazing

Inspiring Interiors

- 12"x 12" ceramic tile entry
- Enameled finish staircase featuring turned balusters and decorative newels. Exposed tread ends (Plan 3)
- 36" wood burning fireplace at family room
- Raised panel Colonist doors throughout
- Spacious linen closets/cabinets
- Andersen exterior French doors (Plan 3)
- Cable and phone wiring system with master panel
- Prewired for cable TV in master suite, secondary bedrooms and family room
- Prewired for telephone in master bedroom, secondary bedrooms and kitchen
- Forced air heat and central air-conditioning
- Designer selected lighting fixtures
- Decora switches
- Gas stub for BBQ
- Chrome lever door hardware

With the Cook in Mind

- White Thermafoil cabinetry adjustable shelves and dual glide drawers
- Hand-set 6"x 6" ceramic tile counter tops with 6" back splash throughout
- Full Whirlpool® appliance package which includes 30" cook-top with sealed burners and porcelain top, oven-microwave combo, range top hood and a dishwasher in white
- Recessed lighting
- Undercounter task lighting
- Water stub-outs for automatic ice maker

Elegant Master Suites

- White Thermafoil cabinetry
- Oversized mirrors above countertops

- Oversized tub and separate hand-set 6"x 6" ceramic tile countertops, tub and shower
- Chrome finished Moen® 8" widespread decorator faucets
- Spacious walk-in closets

Secondary Baths

- White Thermafoil cabinetry
- 4¼" x 4¼" ceramic tile counter tops
- 4¼" x 4¼" hand floated ceramic tile shower and tub surround
- Chrome finished Moen® fixtures
- Chrome finished Moen® bath accessories

Optional Opportunities

- Handcrafted built-ins
- Custom staircase packages
- Finish carpentry upgrades
- Surround Sound systems
- Custom closet organizers
- Granite countertops
- Trash compactor
- Built-in refrigerator
- Washer/dryer
- Jetted tub
- Intercom
- Central vac
- High-tech wiring upgrades
- Security System
- Additional Fireplace

Centex Homes reserves the right to change floor plans, specifications, and prices without prior notice. Such changes may not always be reflected in our models.

Each home has been designed with a selection of advanced materials that have been carefully integrated with the highest consideration for energy efficiency.

The exterior color scheme of each home has been professionally pre-selected and coordinated and is not subject to change.

All renderings, floor plans and maps are artist's conception and are not intended to be an actual depiction of the building, fencing, walks, walls, driveways or landscaping.

All square footages are approximate.

Window and deck locations or sizes may vary. Garage locations/parking may vary by plan/elevation.

Please see our Sales Representative should you have any questions.

We are pledged to the letter and spirit of U.S. policy for the achievement of equal housing opportunity throughout the nation. We encourage and support an affirmative advertising and marketing program in which there are no barriers to obtaining housing of race, color, religion, sex, handicap, familial status, or national origin.

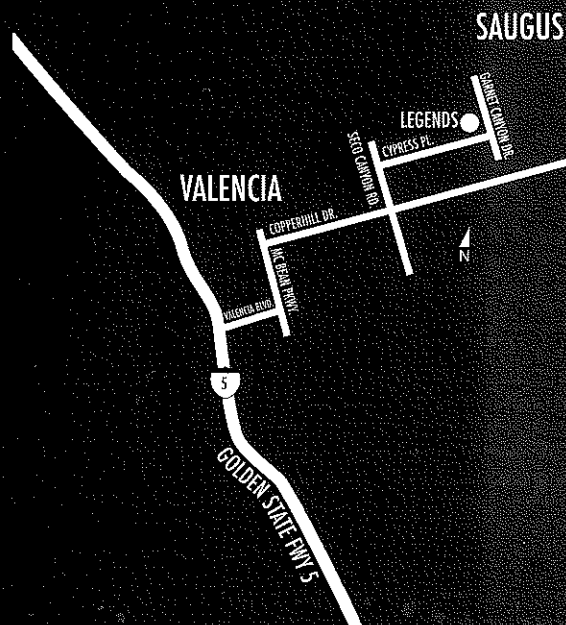
Centex Homes is America's Homebuilder.

*We don't just build homes...
we build neighborhoods.*

Centex Homes is as solid as the Centex home you are about to buy. Centex has the highest rating among public homebuilders from both Moody's and Standard and Poors and also has the largest capital base in the nation's home-building industry. As a publicly-traded company on the New York Stock Exchange since 1969, Centex currently builds in more than 90 markets in 25 states. Since 1950, Centex Homes has built over 350,000 homes nationwide and expects to deliver an additional 25,000 homes, or more, this fiscal year.

Centex Homes was founded in Dallas, Texas ("CENTral TEXas") in 1950. Today Centex Homes proudly maintains the same national reputation for consistently high quality, value and customer satisfaction that started nearly half a century ago. Our mission is to build quality homes and neighborhoods that exceed the expectations we have established with our customers.





29083 Garnet Canyon Drive, Saugus, CA 91390
Phone: 661.263-7583 Fax: 661.263-7942

CENTEX HOMES

A Passion for Living Since 1950

centexhomes.com/los-angeles

Architect: Ritner Nelson Architects
Model Designer: Interior Lifestyles, Inc.
Sales Office Designer: Two's Company Interiors, Inc.
Landscape Architect: Borthwick, Guy, Bettenhausen, Inc.
Signage: Outdoor Dimensions
Advertising Agency: Gaudette Design, Inc.



Features Displayed in Residence Two Model

Distinctive Features:

- Custom entry door
- Decora switches
- Exterior lighting for Country French elevation
- Raised panel Colonist interior doors
- Fireplace in Family Room with ceramic tile surround
- Kitchen island
- White Whirlpool appliance package in Kitchen
- White thermafoil cabinets throughout
- White Kitchen sink
- Chrome faucet package throughout
- Under cabinet task lighting in Kitchen
- Prewired for cable TV in Master Bedroom, Secondary Bedrooms and Family Room – high speed RG6 quad shielded
- Prewired for telephone in Master Bedroom, Secondary Bedrooms and Kitchen – high speed CAT5 E
- Forced heat and air-conditioning system
- Gas stub for BBQ
- Roll up sectional Garage Door with automatic opener

Personalized Optional Features:

- Split maple stair rail system
- Stylish hanging light fixture in Dining Room
- Stylish hanging light fixture at Entry
- Mirrored wardrobe doors at Bed 3
- Mirrored wardrobe doors at Bed 4
- Ceramic tile Kitchen countertops and backsplash
- Granite slab Kitchen island
- Ceramic tile countertops, backsplash, tub and shower surround in Master Bath
- Ceramic tile countertops, backsplash, tub and shower surround in Bath 2
- Ceramic tile countertops, backsplash, tub and shower surround in Bath 3

- Ceramic tile countertops and backsplash in Laundry Room
- 5 1/2" Baseboards throughout
- All flooring
- Shutters and blinds throughout
- Crown moulding in Living Room
- T&G wainscot in Living Room
- T&G wainscot at staircase
- Window stool and apron throughout
- Brite white trim package
- White Whirlpool refrigerator in Kitchen
- Two plate racks in Kitchen
- Recycle bin in Kitchen
- Pot rack with light fixture over kitchen island
- Optional Butler's Pantry
- Two glass upper cabinets at Butler's Pantry
- Water by Design water system package "D" in Kitchen
- Built-in media in Family Room
- Surround sound pre-wire with titanium speakers and hook ups in Family Room
- Speakers with volume control throughout
- Ceiling fan pre-wire and ceiling fan in Family Room
- Maple wall treads and skirt at staircase
- Regency artglass in Nook
- Regency artglass at Porch
- His/hers closet organizer system in Master Bedroom
- Two wall sconces at Master Bedroom entry
- Crown moulding in Master Bedroom
- T&G wainscot in Master Bedroom
- Ceiling fan pre-wired and ceiling fan in Master Bedroom
- Built-in nightstand & bookcase in Bedroom 2
- Two wall sconces in Bedroom 2
- Closet organizer in Bedroom 2
- Highboy in Bath 2

- T&G wainscot in Bedroom 3
- Laundry sink
- Upper cabinet above base cabinet in Laundry
- Upper cabinets above washer and dryer in Laundry
- Security system
- Designer windows in Garage Door

Designer Features*:

- Interior and exterior paint
- All furniture, wall coverings, window coverings and accessories
- Exterior hardscape and landscape
- Outdoor built-in fireplaces, BBQs, play equipment, patio furniture and outdoor accessories
- Live plants
- Media equipment
- Scalloped floating shelves in Loft

CENTEX HOMES

A Passion for Living Since 1950.

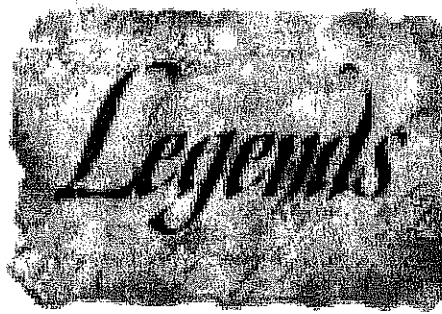
centexhomes.com/los-angeles

This handout is designed for you to use while visiting our model homes. Most of the distinctive or personalized optional features are listed for the specific model home you are touring. If you have any questions, please see a Sales Representative.

Centex Homes reserves the right to make changes to plans and specifications without prior notice. 10/28/03

* Designer Features may not be purchased from Centex Homes.





Price Sheet

See Map on Back of Page

Temporarily Sold Out
Next Phase release approximately March 27, 2004

Lot #	Plan	Square feet of Home	Square feet of Lot	Approximate move-in date	Price
Phase 4					
14	3AL	2876	5927	10-15-04	\$530,000
26	3AR	2876	5948	10-15-04	\$525,000
27	3CR	2876	6049	10-15-04	\$526,248
29	3BR	2876	5895	10-15-04	\$526,300
Phase 5					
16	1CR	2560	5870	11-15-04	\$489,028
17	2AL	2682	6634	11-15-04	\$500,000
18	3BL	2876	8058	11-15-04	\$536,299
24	2CR	2682	5244	11-15-04	\$495,978
25	2BR	2682	5395	11-15-04	\$495,000

Strikethrough homesites are sold or reserved and can take back up offers only

* Room Options Included

No Mello-Roos tax. Homeowners Association dues approximately \$125 a month. Homeowners Association includes slope maintenance and community park. \$10,000 deposit to reserve a homesite.

Sales Representatives

Kathy Mallory

Jim Marshall

661-263-7583

Centex Homes reserves the right to change floor plans, specifications, and prices without prior notice. Such changes may not always be reflected in our models. The exterior color scheme of each home has been professionally pre-selected and coordinated and is not subject to change. Window and deck locations or sizes may vary. Garage/parking configurations may vary by plan/elevation. All square footages are approximate. All renderings, floor plans and maps are artists conception and are not intended to be an actual depiction of the building, fencing, walks, driveways or landscaping. Please see our Sales Representative should you have any questions.

2/1/04

Prices and terms effective date of publication. Square footage is approximate. Models do not depict ethnic preference.





9-10-04

Price Sheet

See Map on Back of Page

Lot #	Plan	Square feet of Home	Square feet of Lot	Approximate move-in date	Price
13	2CL	2682	6599	10-22-04	\$658,357
27	3CR	2876	10849	12-30-04	\$735,894
35	3BL	2876	5558	12-30-04	\$674,166
36	2AL	2682	5732	12-30-04	\$650,000
38	2CL	2682	6140	12-30-04	\$655,912
31	2BL	2682	5417	3-20-05	\$660,000
32	3CL	2876	5230	3-20-05	\$680,449
33	1AR	2743	5093	3-20-05	\$643,700
34	2CL	2682	5487	3-20-05	\$651,269
7	1CR	2560	5739	4-20-05	\$613,755

Strikethrough properties are reserved and can take backup offers only.

No Mello-Roos tax. Homeowners Association dues approximately \$125 a month. Homeowners Association fee includes slope maintenance and a community park. \$10,000 deposit to reserve a homesite.

Sales Representatives

Kathy Mallory

Jim Marshall

661-263-7583

661-263-7942 fax

Centex Homes reserves the right to change floor plans, specifications, and prices without prior notice. Such changes may not always be reflected in our models. The exterior color scheme of each home has been professionally pre-selected and coordinated and is not subject to change. Window and deck locations or sizes may vary. Garage/parking configurations may vary by plan/elevation. All square footages are approximate. All renderings, floor plans and maps are artists conception and are not intended to be an actual depiction of the building, fencing, walks, driveways or landscaping. Please see our Sales Representative should you have any questions.

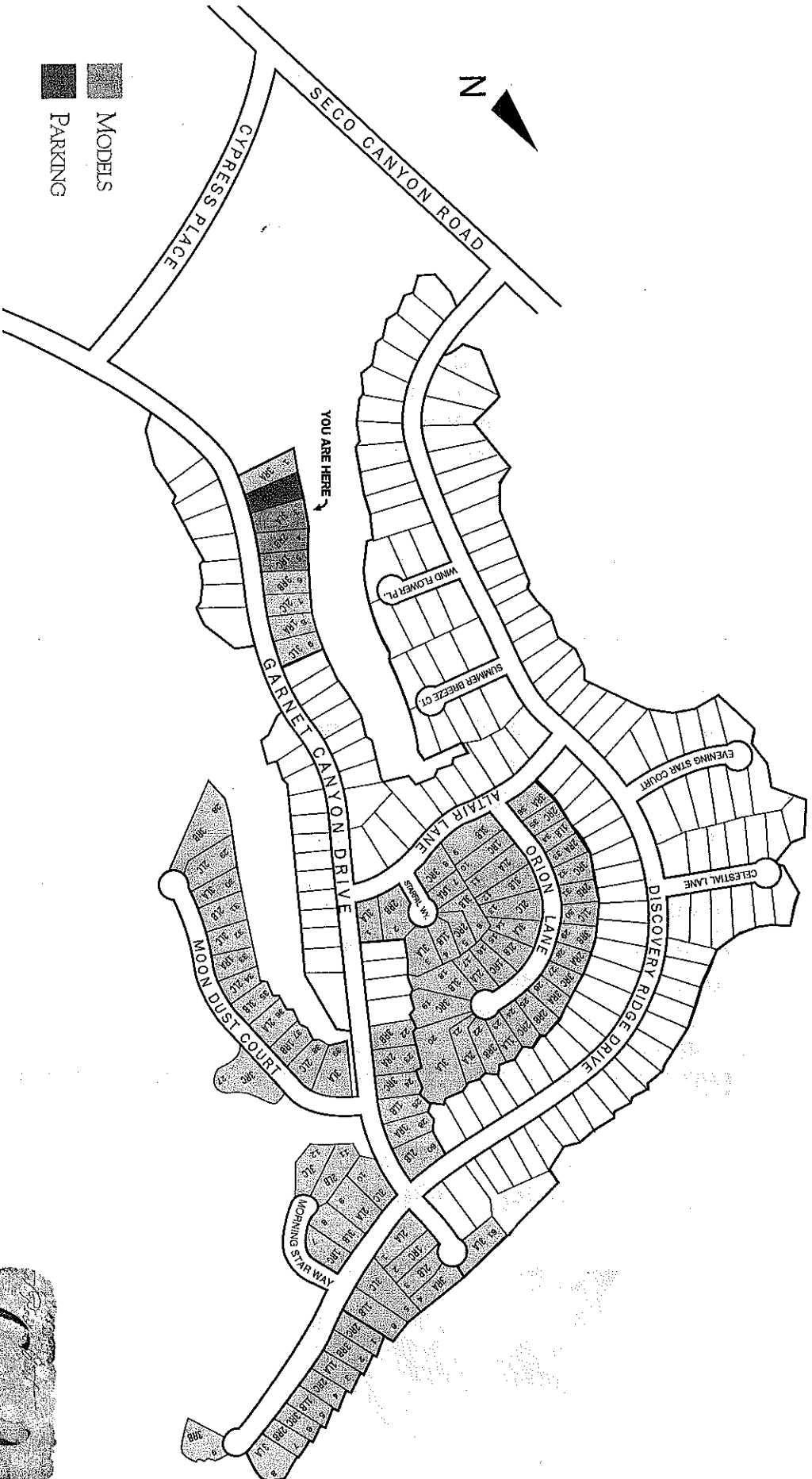
9/6/04

Prices and terms effective date of publication. Square footage is approximate. Models do not depict ethnic preference.



Legends

NEIGHBORHOOD PLAN



Legends

NEIGHBORHOOD PLAN

