

*Emerald*

AT WESTRIDGE  
VALENCIA



## *Another time, another place. . .*

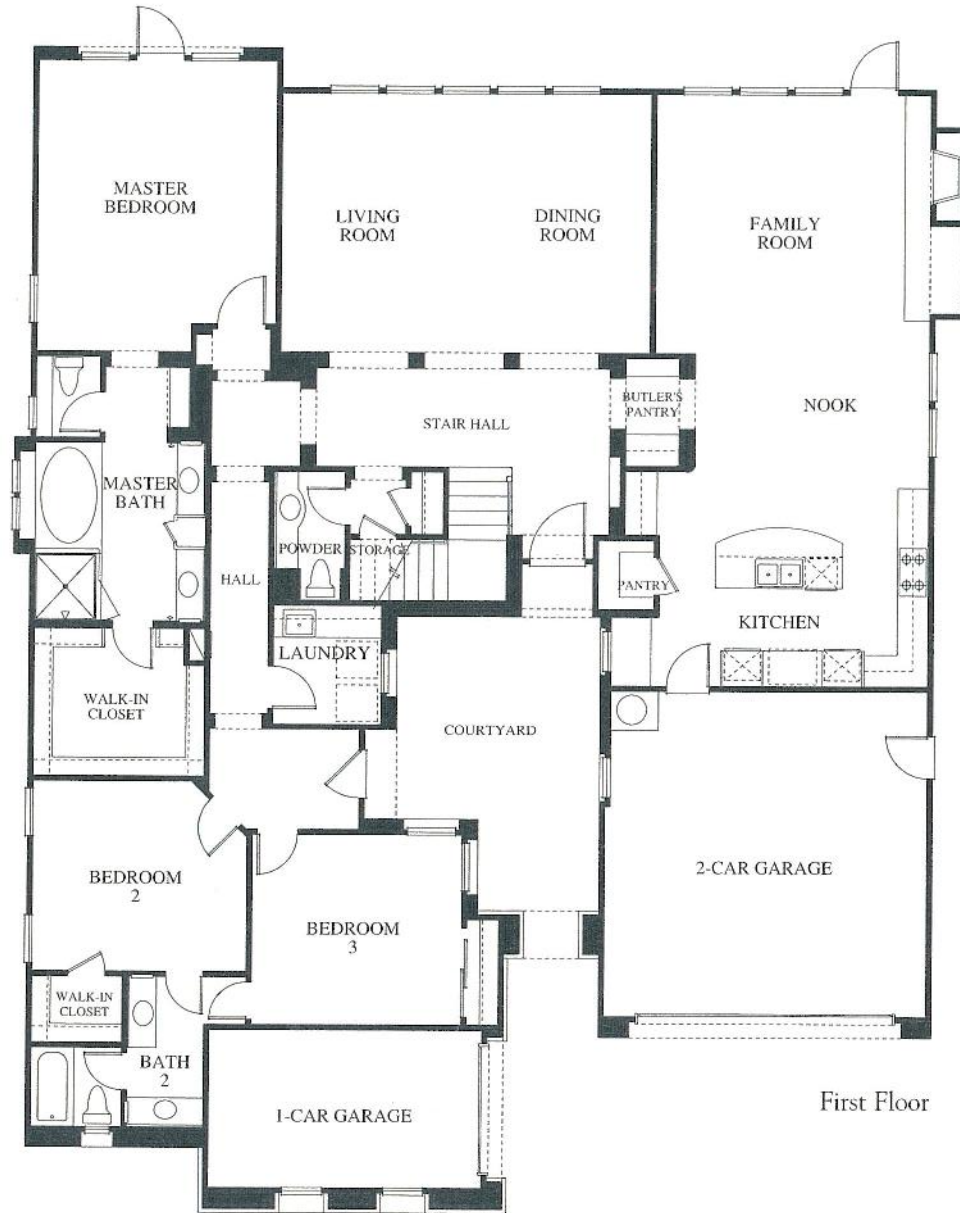
There comes a point in life when only the best is acceptable. That time is Emerald at Westridge, Valencia. A once in a lifetime opportunity to indulge yourself with the finest that a new luxury estate community has to offer.

Emerald is a haven of uncommon residential opportunities for the discerning few who appreciate the ultimate in understated elegance, a refined lifestyle, and a sense of fulfillment. The premiere address for those who seek high standards of taste and excellence.

Presented by Greystone Homes, Emerald evokes the romance of great European classics. The inviting center courtyards, dramatic turrets, graceful arched entries and stately interiors exquisitely capture the charm of the old-world designs. Timeless... sophisticated.

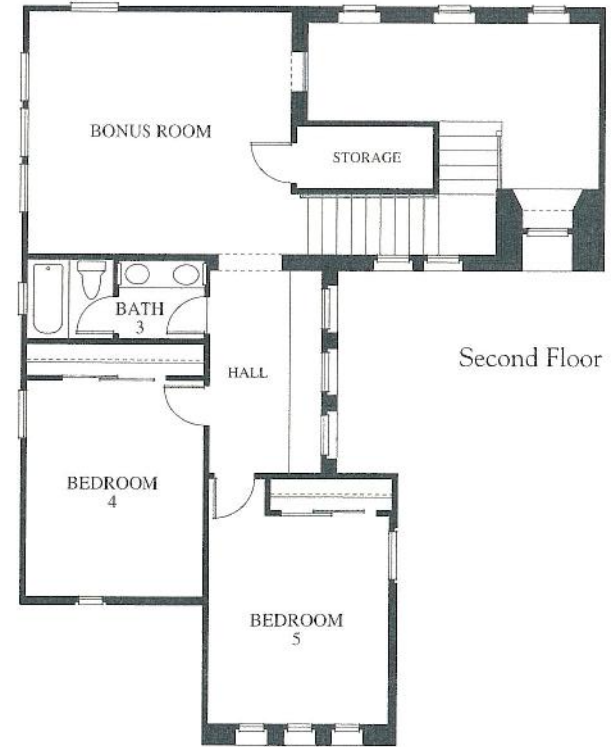
With distinctive style and beauty, these lovely homes offer an abundance of room surrounded in gracious appointments and superb amenities. The extraordinary custom-quality features are all thoughtfully crafted with you and your family in mind. Emerald is the perfect reflection of who you are and an impressive statement that you've arrived.

Your travels near and far have led you to just one place. Emerald at Westridge, Valencia. More than a home, it's a masterpiece.



First Floor

The charm of the courtyard entrance, the elegance of the grand foyer, the convenience of a private first floor master suite - all in perfect harmony with a sophisticated California lifestyle. Access from the master suite allows for a relaxing escape to the rear patio to enjoy warm summer nights. Rejuvenate in the solitude.



Second Floor

# Residence One Reverse

5 BEDROOMS 3 1/2 BATHROOMS BONUS ROOM 3,567 SQUARE FEET





1AR

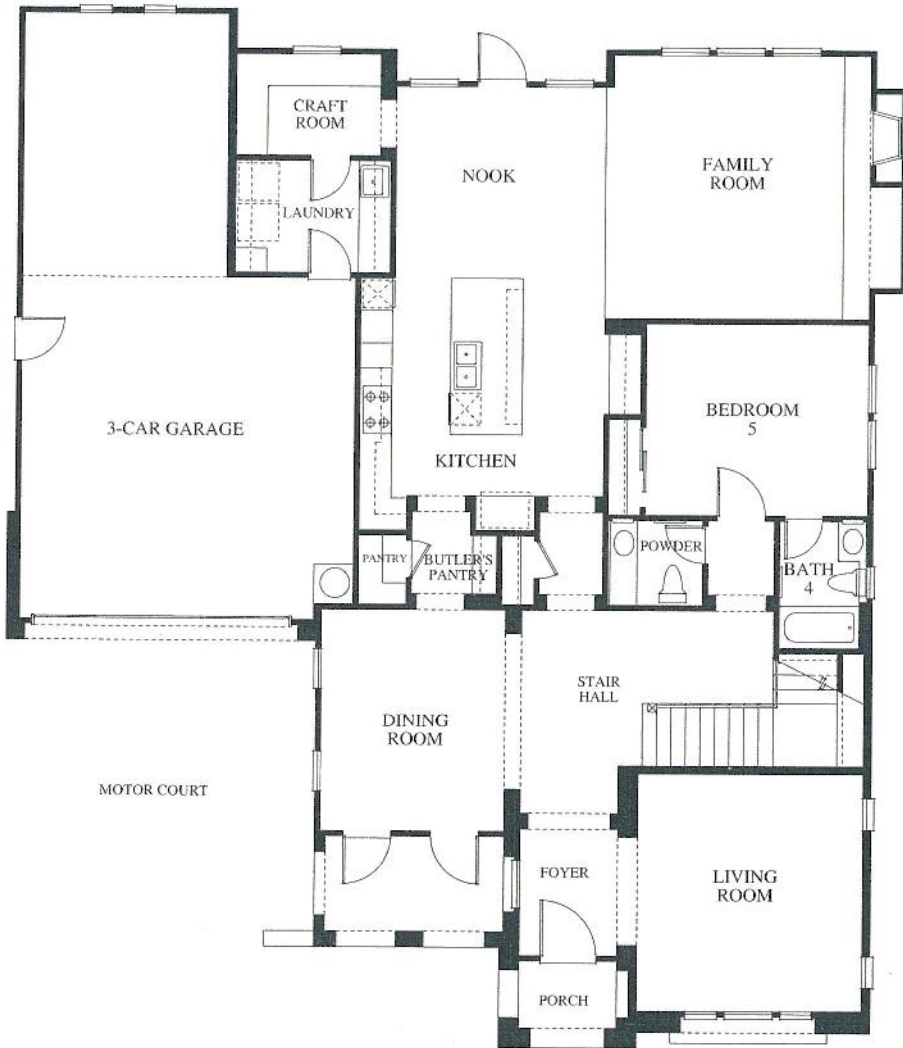


1BR



1CR

*Residence One Reverse*



First Floor



Second Floor

# Residence Two

5 BEDROOMS   4 1/2 BATHROOMS   CRAFT ROOM   MASTER RETREAT   3,718 SQUARE FEET

The luxury of space, the appreciation for privacy. Every member of the family has their own special place. Even your guests are pampered with a convenient downstairs bedroom with a private full bath. Before rushing off to start your day, slip outside through the breakfast nook for a quiet cup of coffee and the morning paper. Just another beautiful day in paradise.

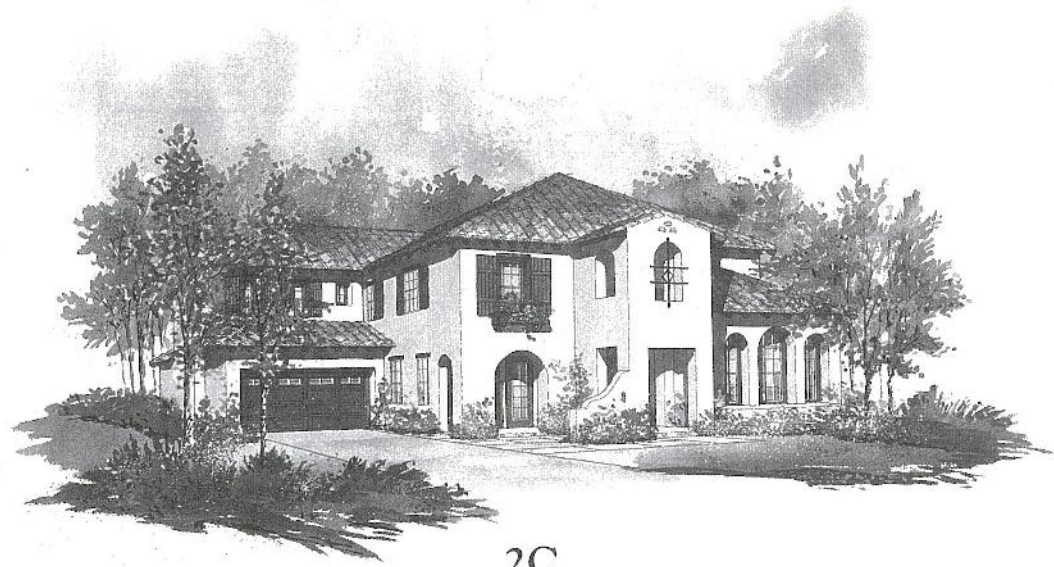




2A

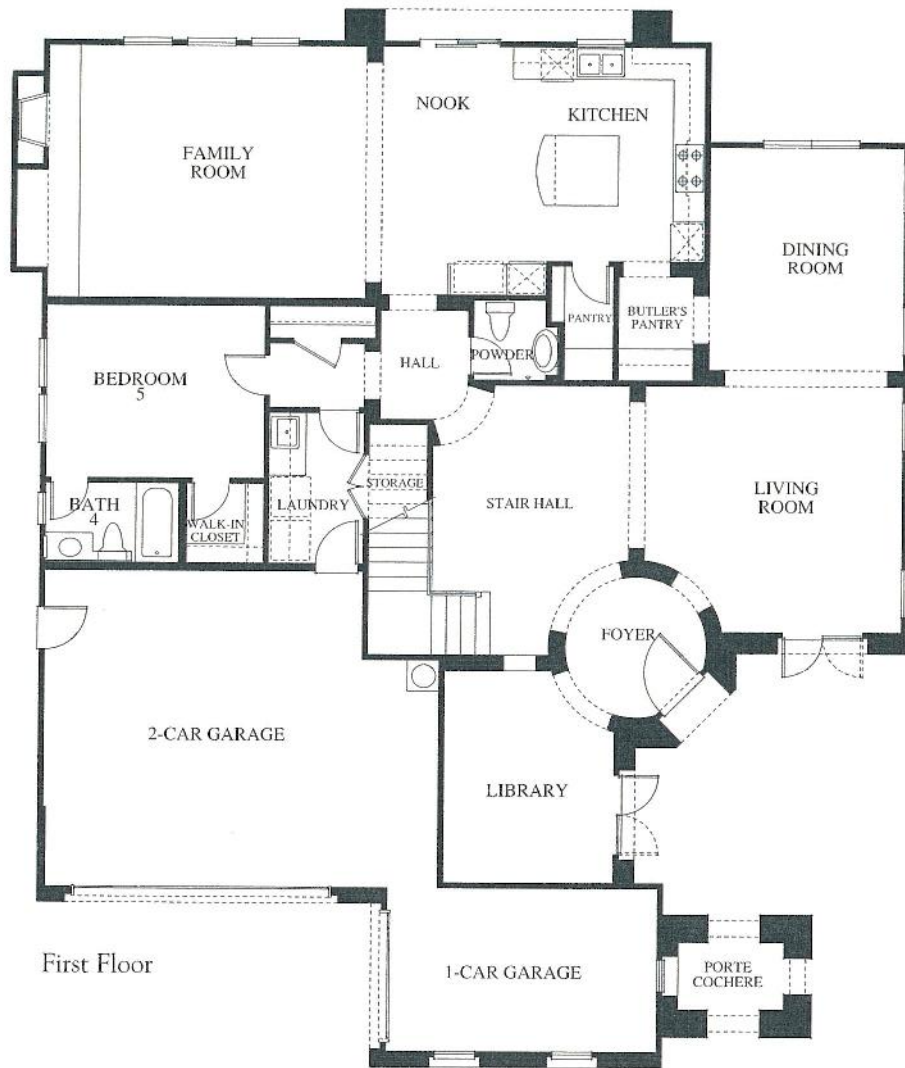


2B

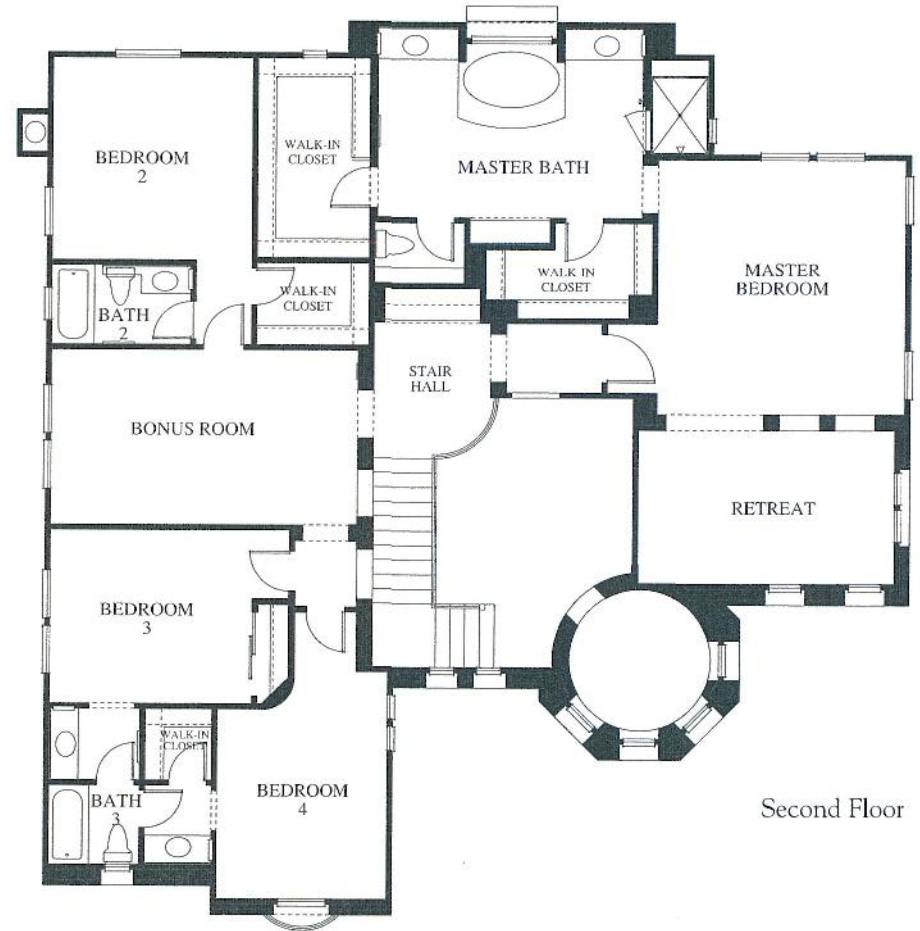


2C

*Residence Two*



First Floor



Second Floor

Re-defining estate living. This stately home perfectly blends classic design with contemporary amenities - elegant granite countertops you've always dreamed of and a handy butler's pantry. The dramatic rotunda foyer offers an impressive entry. You especially appreciate being able to watch your children's activities in the family room while entertaining in your gourmet kitchen. With a master retreat, there's room for quiet moments too.

# Residence Three

5 BEDROOMS   4 1/2 BATHROOMS   BONUS ROOM   LIBRARY   MASTER RETREAT   4,093 SQUARE FEET

In an effort to continuously improve our product, Greystone Homes reserves the right to change floor plans, specifications and materials without prior notice. Variations in floor plans, windows and elevations do exist; square footage is approximate and will vary. 11/02





3A



3B



3C

*Residence Three*



## *Deluxe Features*

Architecturally coordinated exterior colors with fire resistant concrete tile roofs  
Sectional roll-up garage doors with openers  
Complete side and rear yard fencing for privacy  
Gas stub in rear yard for future barbecue  
Impressive eight foot front entry doors  
Salt finish driveway  
Gutters and downspouts in select locations  
Exterior outlet with inside switch for holiday lighting  
Low voltage lighted address identification

## *Stylish Interiors*

Ceramic tile entry flooring  
Elegant wall-to-wall carpeting with a wide array of color selections  
Art niches  
Custom radius wall corners  
Traditional raised panel interior doors with decorative antique finish nickel hardware  
Media niche in family room  
Pre-wired with dual RG6 cable for multi-room satellite system and digital cable  
Pre-wired with high speed category 5e wiring for networking and multi-line phone  
Light texture on walls and ceilings  
Wood burning fireplace with glass panel doors  
Solid maple stair handrail with white wood spindles  
All bedrooms and family room wired to accept ceiling fans  
Surround sound pre-wiring for 7.1 channel system  
Architecturally pleasing door casings and wall baseboards

## *Spacious Kitchens*

Granite countertop  
Maple cabinet doors with vinyl interiors and adjustable shelves in upper cabinets  
Quality GE™ stainless steel appliance package including:  
36" professional six-burner gas cooktop  
Built-in self cleaning electric oven  
Built-in Advantium™ oven  
Warming drawer  
Built-in stainless steel refrigerator  
Energy saving multi-cycle dishwasher  
Trash compactor  
Conveniently located storage pantry  
Compartmental stainless steel sink with heavy duty waste control  
Moen™ single-lever pull-out kitchen faucet  
Refrigerator area plumbed with recessed valve for ice maker  
Convenient under cabinet task lighting  
Gourmet center island

## *Elegant Master Bedroom Suite and Bath*

Maple cabinetry with ceramic tile countertop  
Dual vitreous china vanity sinks with buyer preferred Moen™ chrome fixtures  
Compartmental water closet with elongated water-saving toilet  
Generous walk-in closet  
Decorator selected vanity lighting  
Beveled and recessed mirrors  
Luxurious jetted oval tub and separate shower with tile surround  
Double-sided mirrored closet doors

## *Secondary Baths*

Handset 6" x 6" ceramic tile countertop  
Moen™ chrome fixtures  
Decorator bar lighting  
Tub/shower with ceramic tile walls  
Maple cabinetry

## *Special Features*

Silent touch Decora electrical switches  
Wood window sills on most windows  
Squeak resistant upper floors  
Smoke detectors throughout  
Dual forced air heating and air conditioning system with night set-back thermostat for energy savings

## *Energy Efficient Features*

Vinyl and aluminum dual glazed windows and sliding doors  
Energy efficient 75 gallon water heater  
Water-saving toilets  
Economical gas forced-air heating  
Gas hook-up in laundry area  
Full weather-stripping on most exterior doors

# *Luxurious Amenities*

In an effort to continuously improve our product, Greystone Homes reserves the right to change floor plans, elevations, specifications, materials and prices without prior notice. All plans, landscaping, floor plans, renderings and maps are an artist's conception, and are not intended to be an exact duplication of either building or landscaping. Variations in the floor plans and elevations do exist and square footages are approximate and will vary. Window locations and sizes as well as specific detailing may vary with different locations and elevations. Color and size variations may occur. The prices of our homes, included features, and available locations are subject to change without notice. Please see the actual home purchase agreement for additional information, disclosures, and disclaimers relating to the home and its features. © 2002 Greystone Homes, Inc.

The decorator items in the models, including and not limited to furnishings, window coverings, accent paint colors, wallpaper, molding and paneling, special mirrors, special carpeting and floor coverings, and lighting fixtures, patio covers, landscaping and hardscaping and certain fences are for suggestion and display only and are not included in the purchase price. Please see New Home Consultant for details.

All communities with homeowner's associations have been established to enhance the long-term value and integrity of the community. The association provides a vehicle for maintaining community common areas. The association is financially supported by all homeowners of said community. Membership is automatic. If a Community Facility District or Landscape Maintenance District should occur within said community, homeowners automatically participate to support local schools, water and landscape districts. 11/02



*Emerald*  
 AT WESTRIDGE  
 VALENCIA

26002 W. Shadow Rock Lane, Valencia, California 91381

(661) 260-1387 (661) 260-1465 FAX

[www.GreystoneHomes.com](http://www.GreystoneHomes.com)

