

CROSSROADS



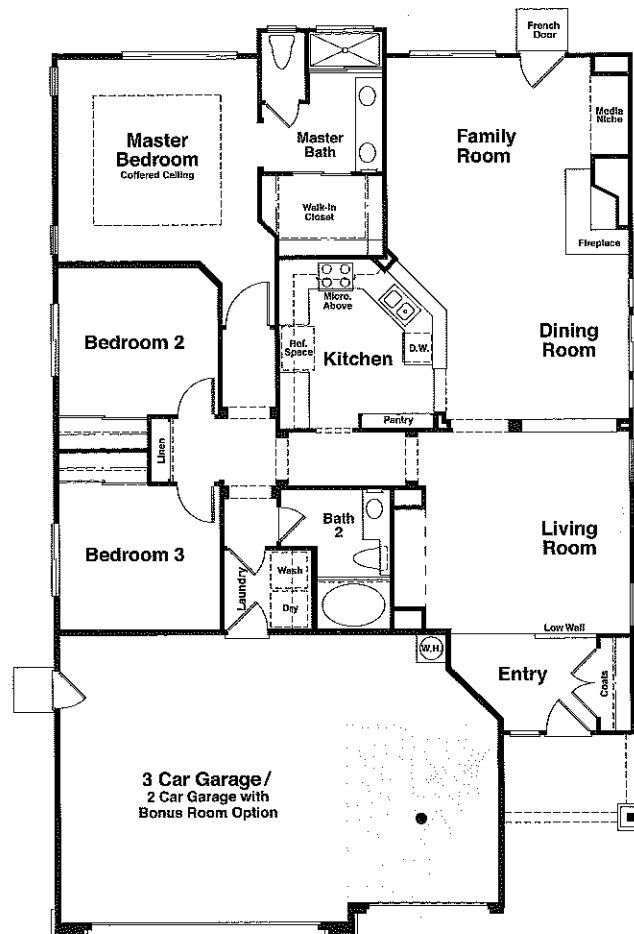
AT PACIFIC CREST

Residence One

- *Approximately 1,723 Square Feet*
- *One Story*
- *Three Bedrooms*
- *Two Baths*
- *Family Room*
- *Formal Living Room*
- *Large Kitchen*
- *Three Car Garage*



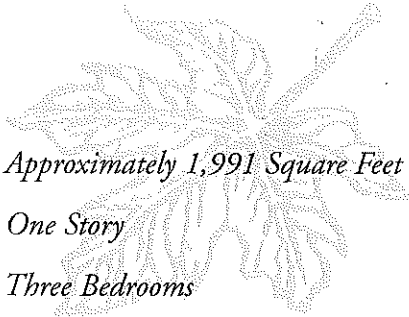
One AR



First Level

Window locations and sizes may vary per elevation.

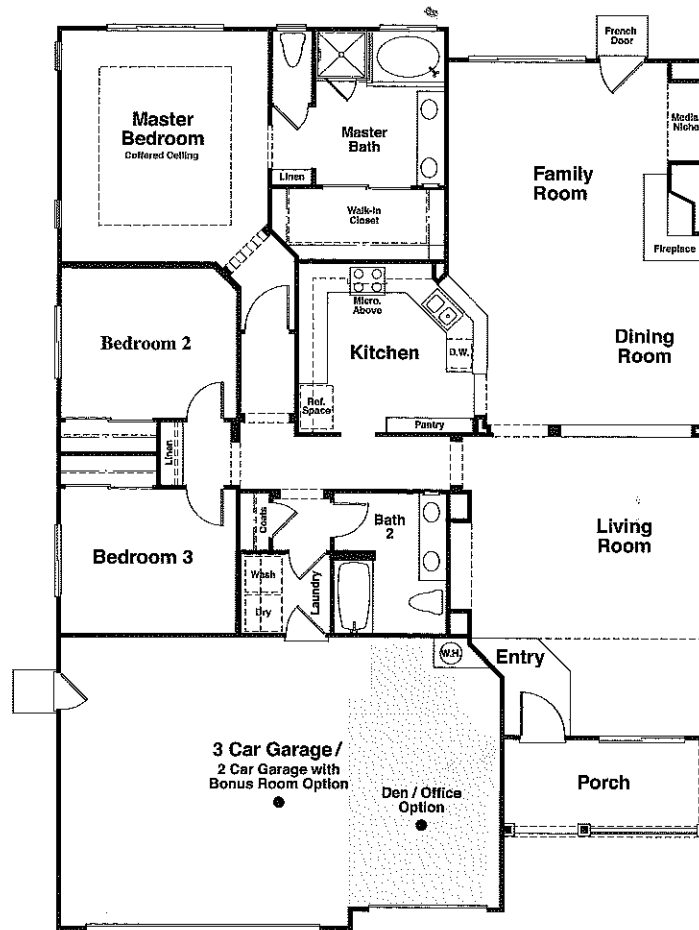
Residence One X



- *Approximately 1,991 Square Feet*
- *One Story*
- *Three Bedrooms*
- *Two Baths*
- *Large Family Room*
- *Dining Room*
- *Formal Living Room*
- *Three Car Garage*



One XDR



First Level

Window locations and sizes may vary per elevation.

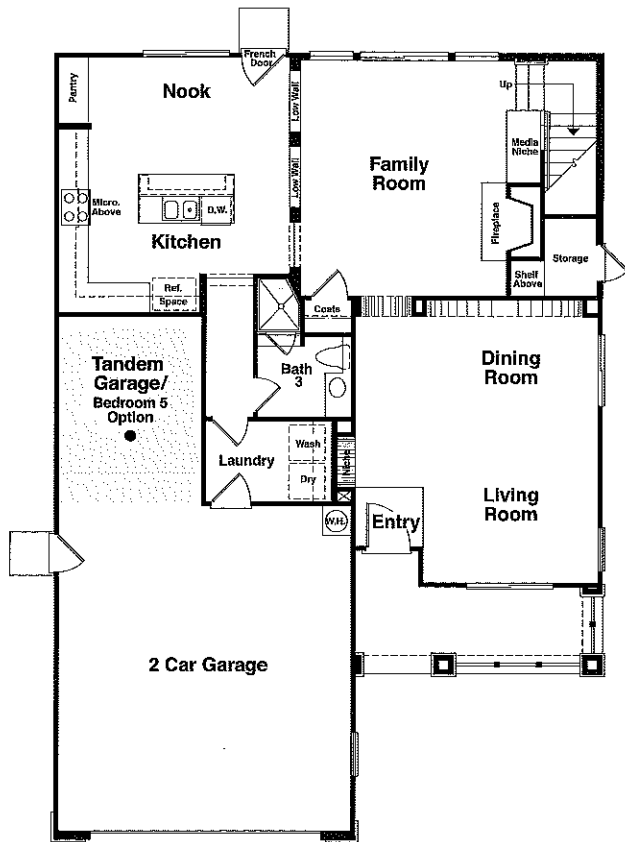
Residence Two



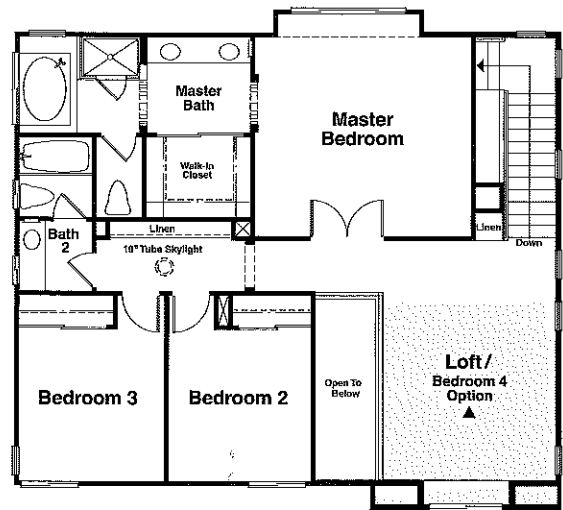
- *Approximately 2,213 Square Feet*
- *Two Story*
- *Three Bedrooms plus Loft*
- *Two and Three Quarter Baths*
- *Large Kitchen with Nook*
- *Family Room*
- *Formal Dining Room*
- *Living Room*
- *Two Car plus Tandem Garage*



Two DR



First Level



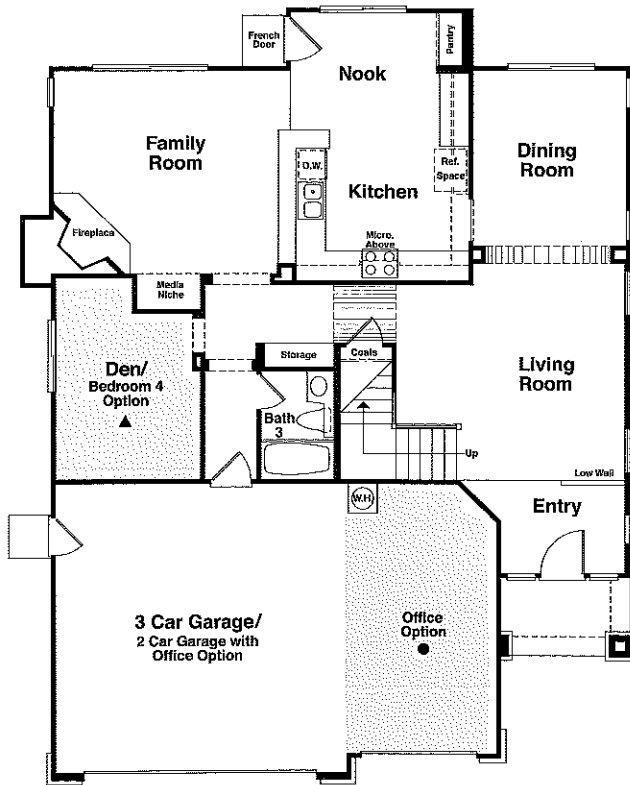
Second Level

Residence Three

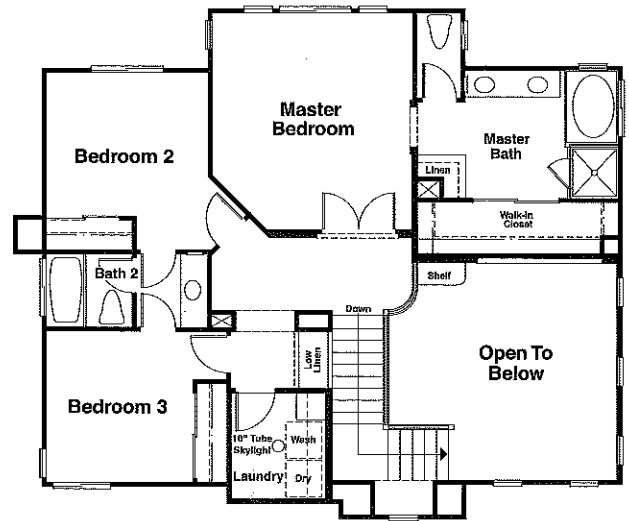
- *Approximately 2,239 Square Feet*
- *Two Story*
- *Four Bedrooms*
- *Three Baths*
- *Large Family Room*
- *Kitchen with Nook*
- *Formal Living Room*
- *Three Car Garage*



Three AR



First Level



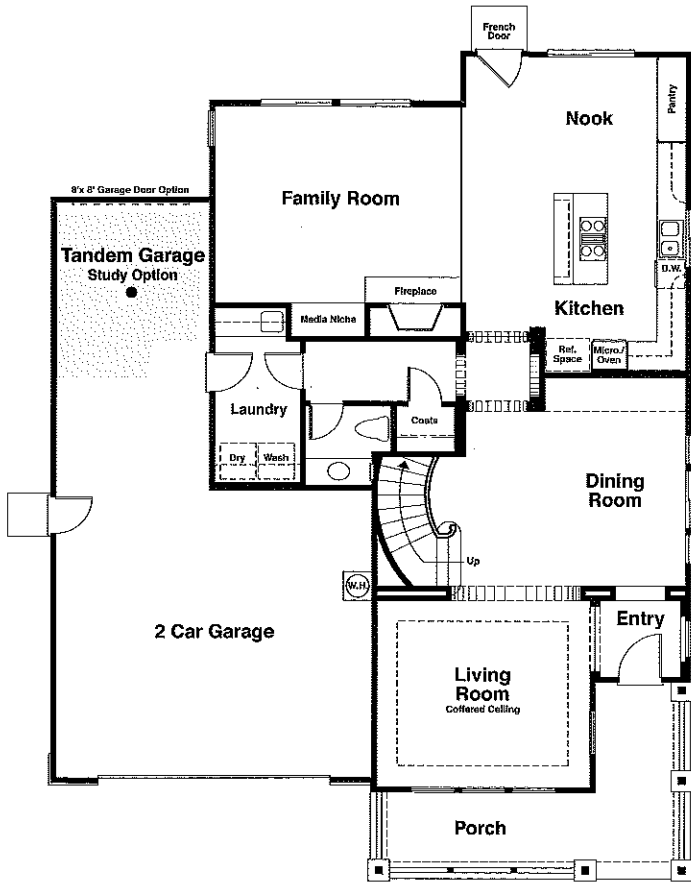
Second Level

Residence Four

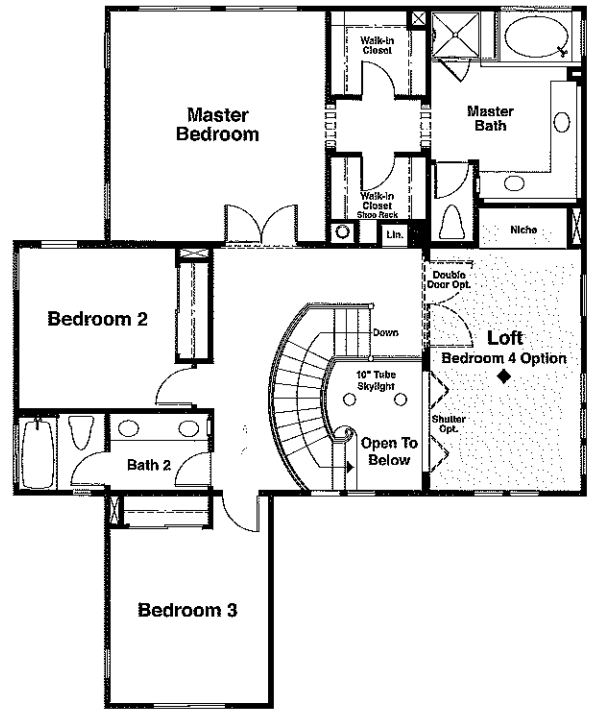
- Approximately 2,642 Square Feet
- Two Story
- Three Bedrooms plus Loft
- Two Baths plus Powder Room
- Large Kitchen with Nook and Family Room
- Formal Dining Room
- Living Room
- Porch
- Two Car plus Tandem Garage



Four CR



First Level



Second Level

Pacific Bay Homes

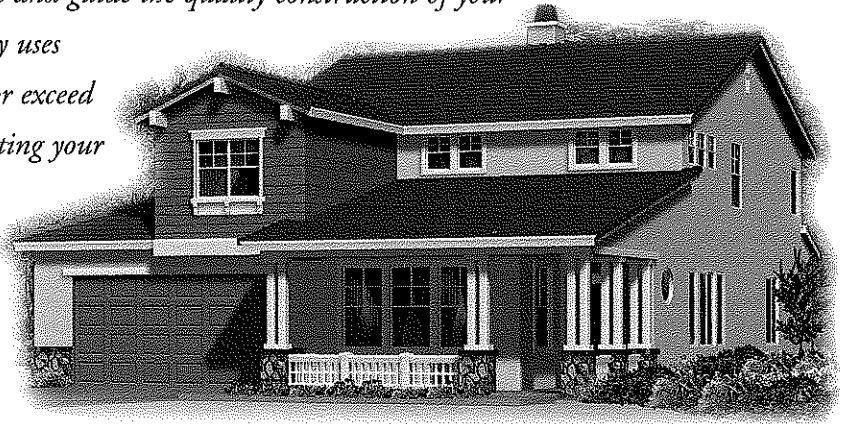


There are two things in life that are for keeps. Your family and your home. The better your home is built, the more your family can depend on it. And you can be assured of quality when your home is built by Pacific Bay Homes, LLC. The company is responsible for some of the finest residential communities in the country, from California to New York. Pacific Bay Homes now has four rapidly growing divisions in California and ranks among the top homebuilders in the state.

Our goal? Build each home to be as special as the priceless memories born there. The building blocks? Quality design, engineering, materials and craftsmanship all working together to complement each other.



A home built by Pacific Bay Homes begins with a design created by one of a select group of leading architectural firms. They work hand in hand with our construction engineers to create and guide the quality construction of your home. Pacific Bay Homes only uses building materials that meet or exceed industry standards in constructing your home. Each part of your home is built nail-by-nail, board-by-board, pipe-by-pipe by experienced contractors to meet our strict standards.



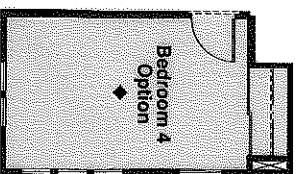
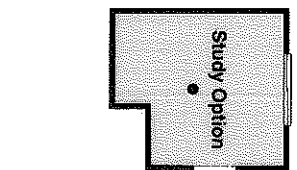
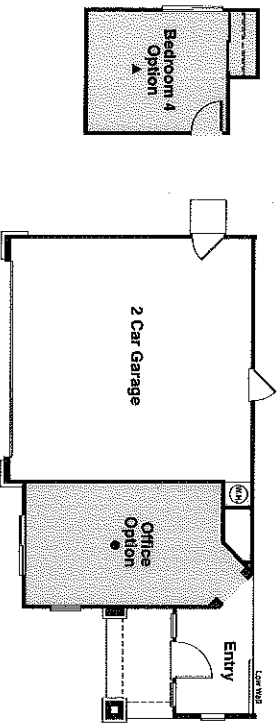
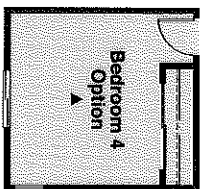
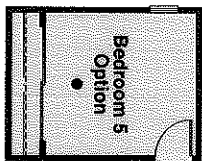
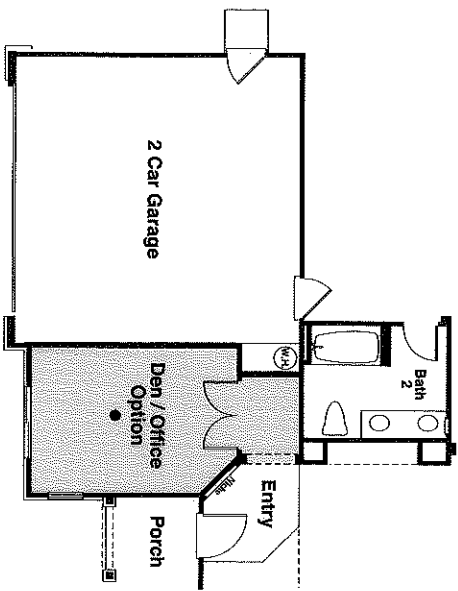
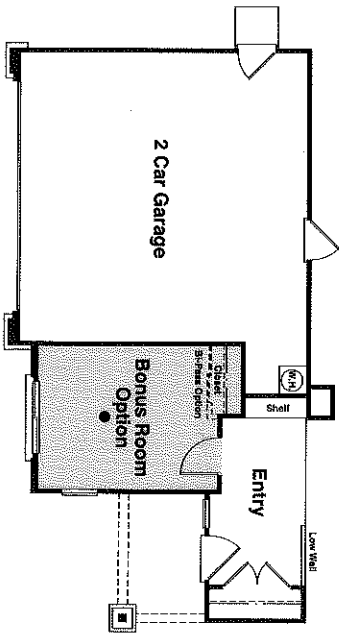
The result? Pacific Bay Homes was named Best Home Builder in California by National Survey Systems in a survey of over 12,000 new home buyers. And in a competition among all new home communities across the country, one of our Southern California communities was judged to be the homebuilding industry's "Community of the Year."

In all, Pacific Bay Homes designs and builds each house to meet the standards of the most demanding authority of all: the family that calls it home.

CROSSROADS

Available Options:

Line up symbol (●, ◆, ▲) with corresponding symbol on original floor plan for option review.



Amenities

Distinctive Architectural Features

- Exciting exterior designs featuring Hardiplank, textured siding, stucco with brick or ledge stone accents
- Integral color concrete tile roofs which are fire resistant, low maintenance and architecturally pleasing
- Lighted address numbers
- Exterior gas service at rear of home for future barbecue
- Convenient indoor laundry room with cultured marble countertops (plans 3 and 4)
- Bullnose interior drywall corners
- Fiberglass Therma-Tru designer-raised panel front entry doors with Titan solid brass "Garnet" lockset and deadbolt
- Raised six-panel interior passage doors with Kwikset "Polo" knobs
- Hand-crafted maple hand rail with painted pickets and end treads (plans 3 and 4)
- Powder-coated white, ventilated closet shelving
- Pre-wired systems:
 - Telephone and cable television included in all bedrooms, as well as standard locations
 - Home Security
 - Ceiling fan outlets in family room and master bedroom
 - Home is wired (Category 5) for advanced computer networking and multi-function phone systems
- Complete side-and rear-yard masonry walls and/or tubular steel fencing per lot plan
- Three-car garages available (configurations and availability options vary per plan), with insulated steel sectional roll-up garage doors with opener and two transmitters



Gourmet Kitchens

- Built-in Whirlpool quality appliances, available in black or white, including:
 - Thirty-inch self-cleaning "AccuBake" electric oven with EZ-Touch controls
 - Thirty-inch four burner sealed-gas cooktop
 - Five-cycle Energy-Star dishwasher with sound lock system
- Hand-set ceramic tile counter tops
- Hand-crafted alder/birch cabinetry with semi-concealed hinges
- Refrigerator area plumbed for ice maker water service
- Price Pfister faucet fixture with separate pull-out spray head
- Recessed ceiling downlighting



Comfortable Living Areas

- Wood-burning fireplace with stone or brick face and hearth (per plan) and painted wood or detailed drywall mantels (per plan)
- Media niches
- Dramatic cathedral, vaulted or coffered ceilings (per plan)
- Elegant hand-set ceramic tile entries, vinyl flooring in kitchen, laundry and secondary bath areas
- Smoke detectors with warning alarm
- Recessed ceiling lights with bulbs
- Painted linen cabinets throughout
- "Decora" silent electrical switches
- Mirrored wardrobe by-pass doors in all bedrooms

Private Master Suites

- Hand-crafted alder/birch cabinetry with semi-concealed hinges
- Oval tub with separate shower and clear enclosure with ceramic tile surrounds (per plan)
- Private compartmentalized water closet

- Ceramic tile Pullman tops with dual sinks
- Spacious walk-in closets
- Elegant Price Pfister chrome wide-spread faucets
- Full-length mirrored wardrobe doors

Special Features and Energy Savers

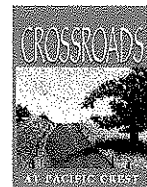
- Dual-glazed windows
- Programmable digital thermostat
- Energy-efficient fifty-gallon water heater
- Plumbed for gas dryer service
- Single-lever water shutoff at washer
- Energy-efficient heating and air conditioning
- Fiberglass batt insulation exterior walls and attic/roof areas

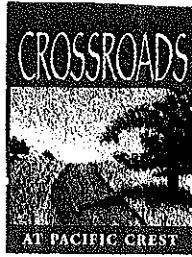
Builder Option Selection Summary

Pacific Bay Homes also offers a variety of option selections that allow you to further personalize your new home (availability subject to production status). Some of which are summarized as follows:

- Full-height splash at kitchen counter-tops
- Additional electrical outlets
- Tub and shower enclosures in secondary baths
- Den, loft, office and bonus room alternates (per plan)
- Sectional garage door with windows
- Ten ceramic tile color selections for kitchens, master and secondary baths

Please see your sales counselor for complete information regarding the option program.





10-6-

Residence One

From \$259,990 to \$277,990

Approximately 1,723 Square Feet

One Story

Three Bedrooms

Two Baths

Residence One X

Temporarily Sold Out

Approximately 1,991 Square Feet

One Story

Three Bedrooms

Two Baths

Residence Two

From \$269,990 to \$291,990

Approximately 2,213 Square Feet

Two Story

Three Bedrooms Plus Loft

Two and Three Quarter Baths

Residence Three

From \$278,490 to \$311,500

Approximately 2,239 Square Feet

Two Story

Four Bedrooms

Three Baths

Residence Four

From \$307,990 to \$350,990

Approximately 2,642 Square Feet

Two Story

Three Bedrooms plus Loft

Two Baths plus Powder Room

Prices effective 8/26/00 and subject to change.

28847 Garnet Canyon Drive

Saugus, California 91350

Phone 661-296-7966. Fax 661-296-8728