

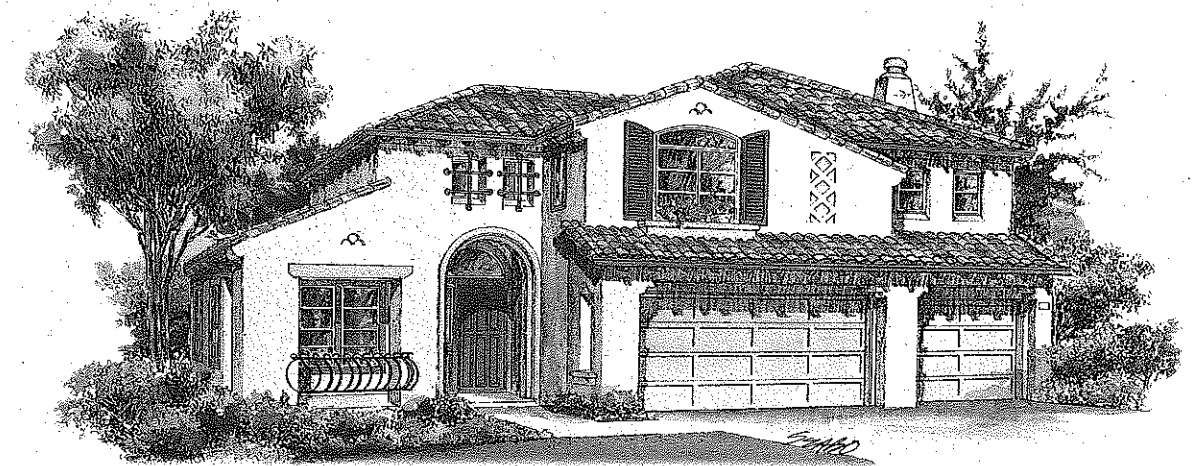


A

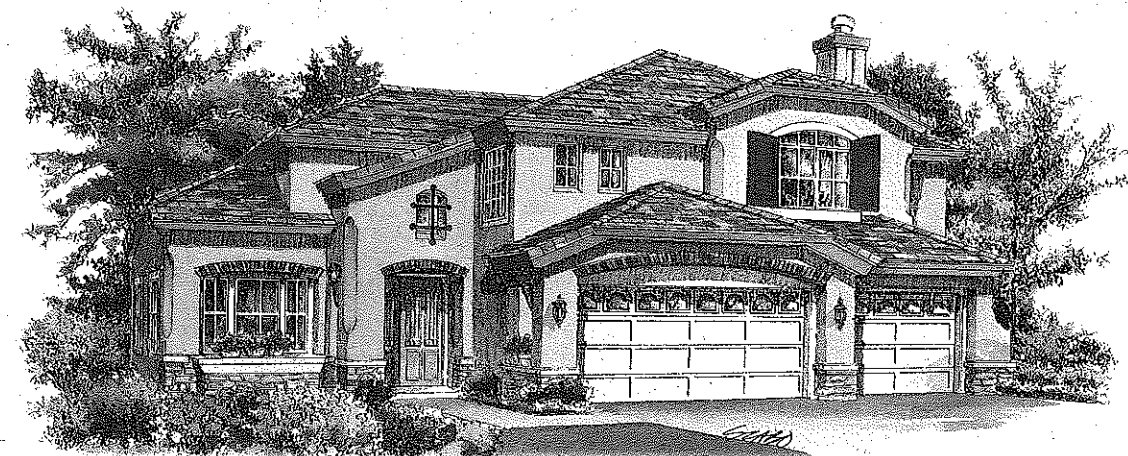
A RREZO

PLAN 100

5 bedrooms
(including master
suite and lower level
bedroom which
could convert to
den or home office),
2822 square feet,
three car garage, two
fire places, 3 baths.

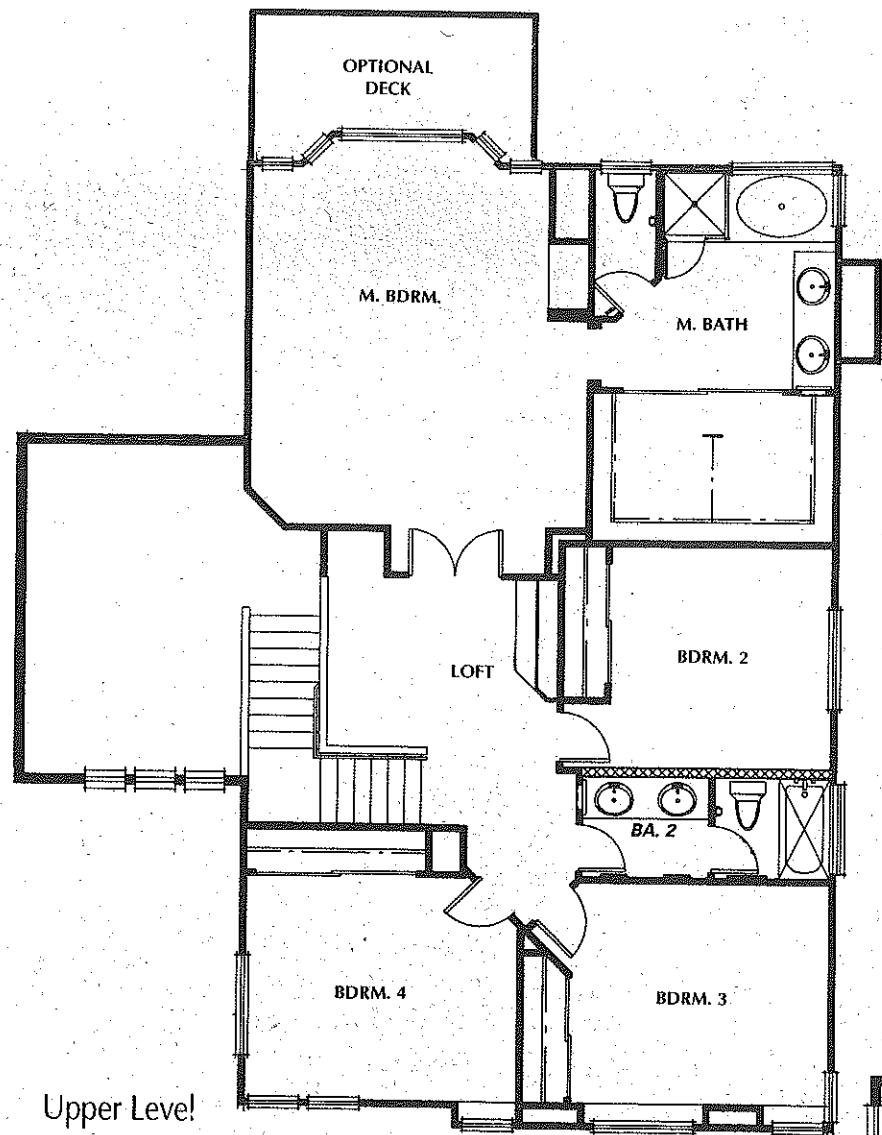


B

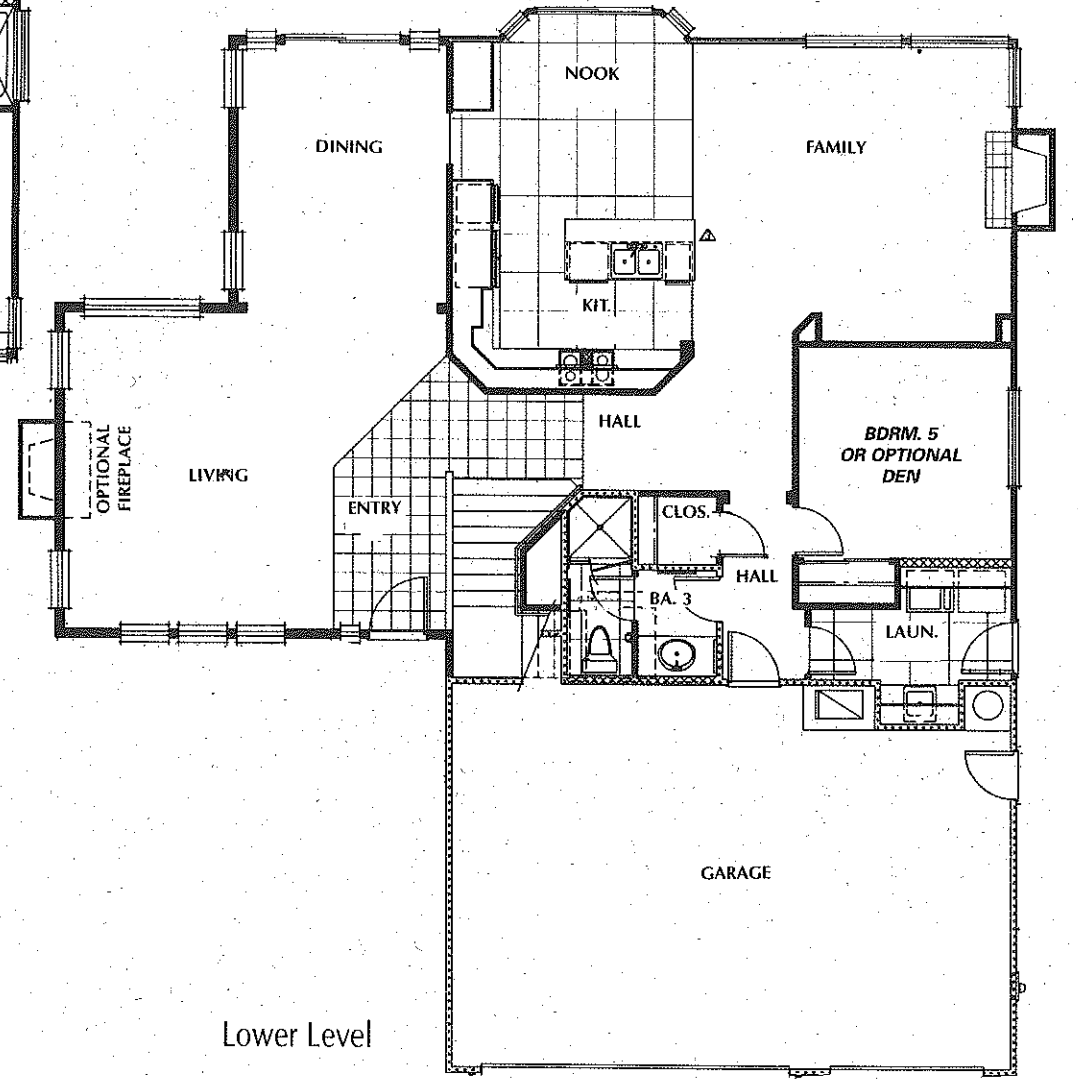


C

Renderings are artists concepts



Upper Level



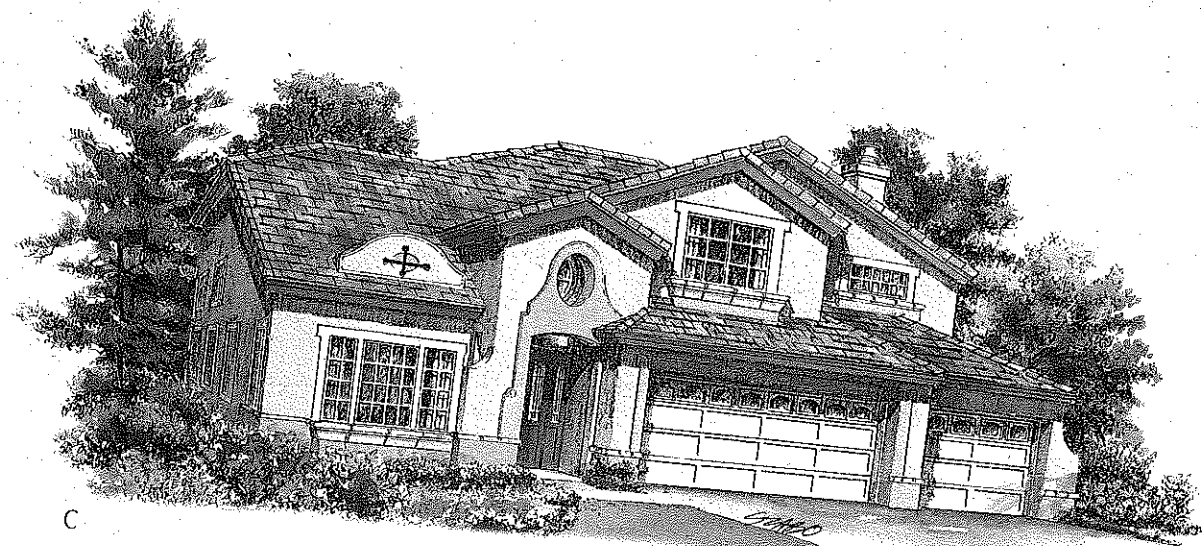
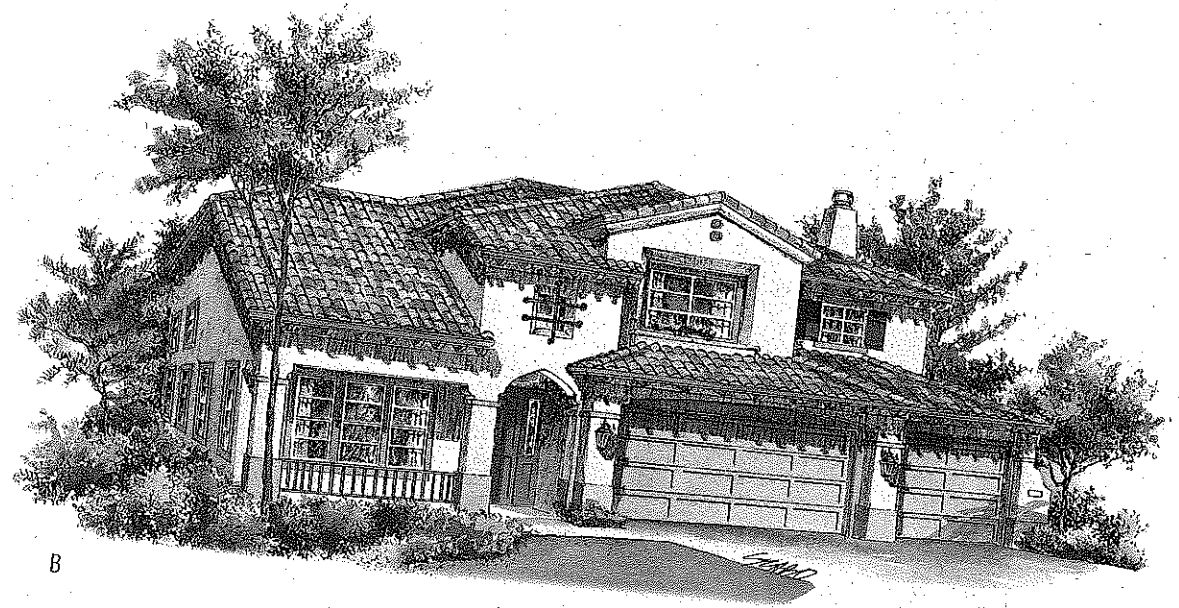
Lower Level



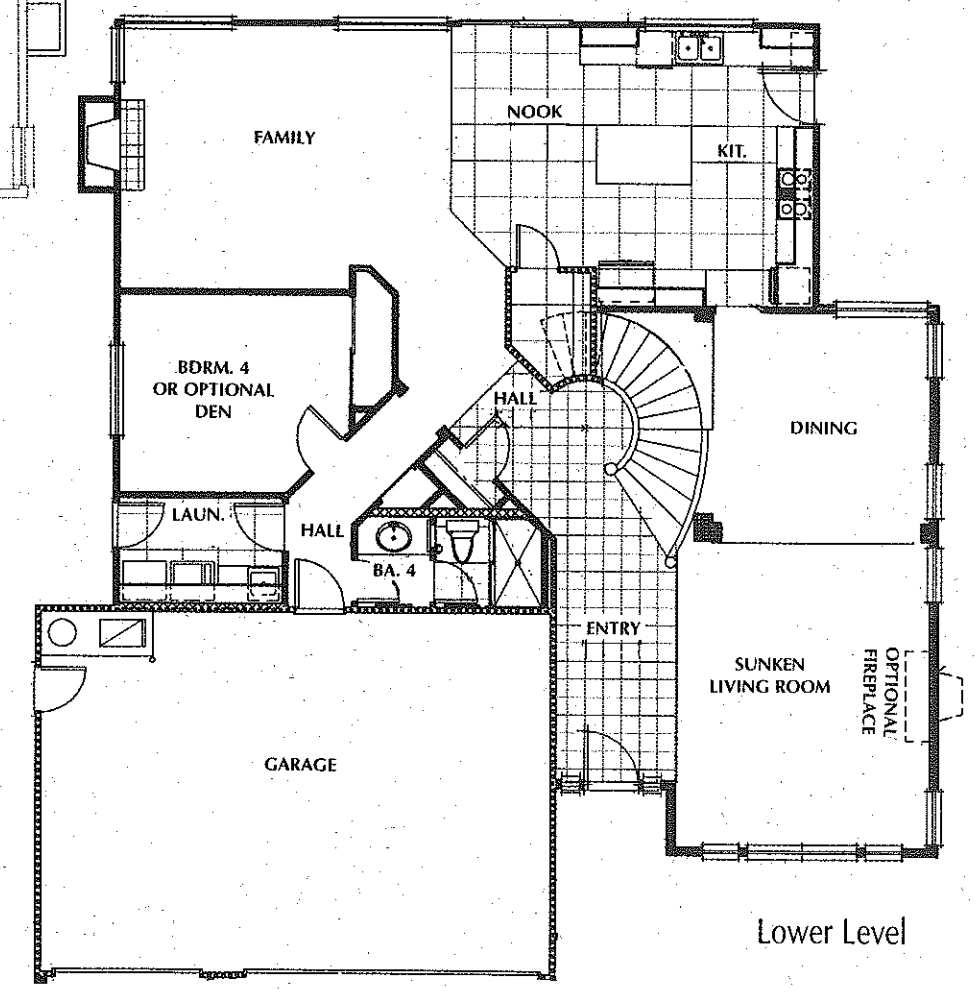
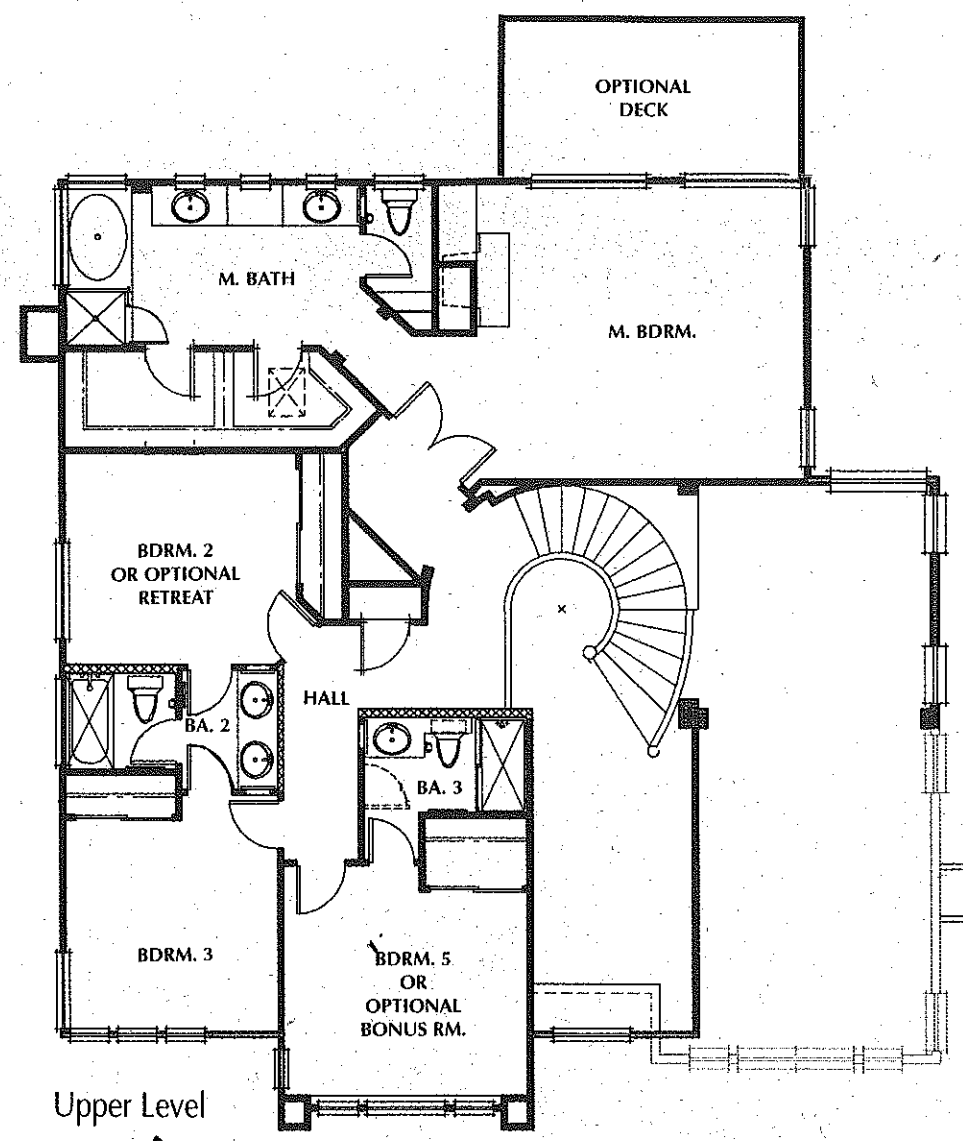
BOTTICELLI

PLAN 200

5 bedrooms
(including master
suite and lower level
bedroom which could
be used as a library
or office); 4 baths,
3035 square feet,
three car garage,
two fire places,
circular stairway.



Renderings are artists concepts



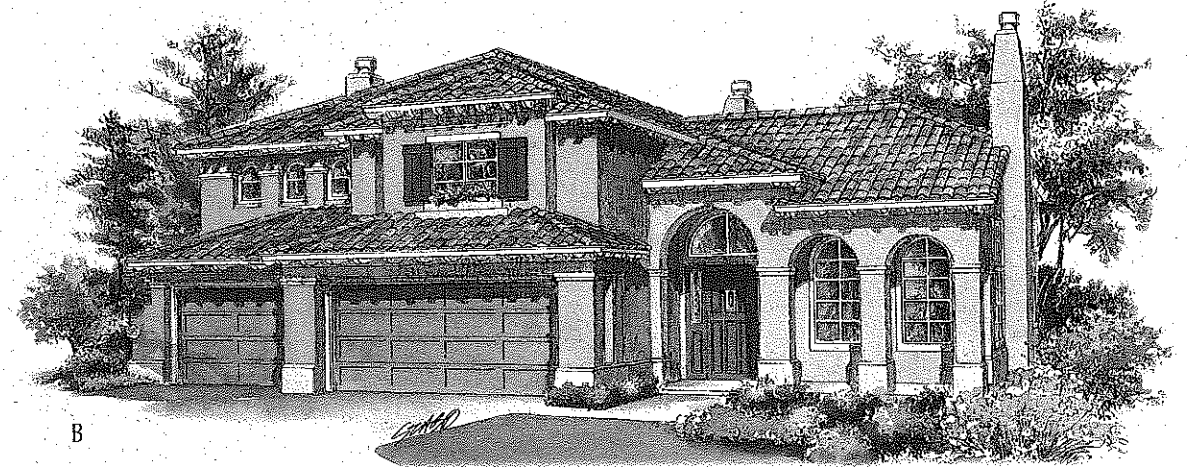


A

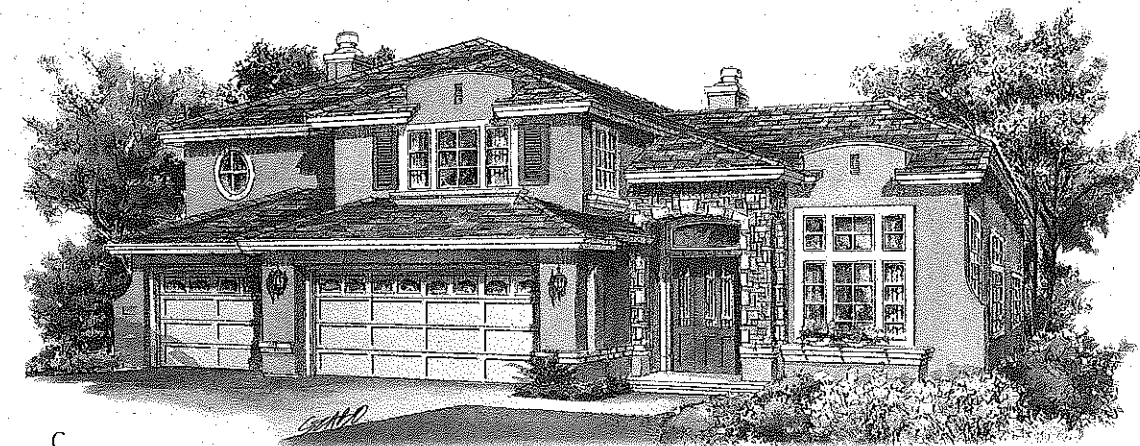
CIVITA

PLAN 300

5 bedrooms
(including master
suite and lower
level suite which
could be used as
a den or home
office); 5 baths,
3206 square feet,
3 car garage, two
fire places.

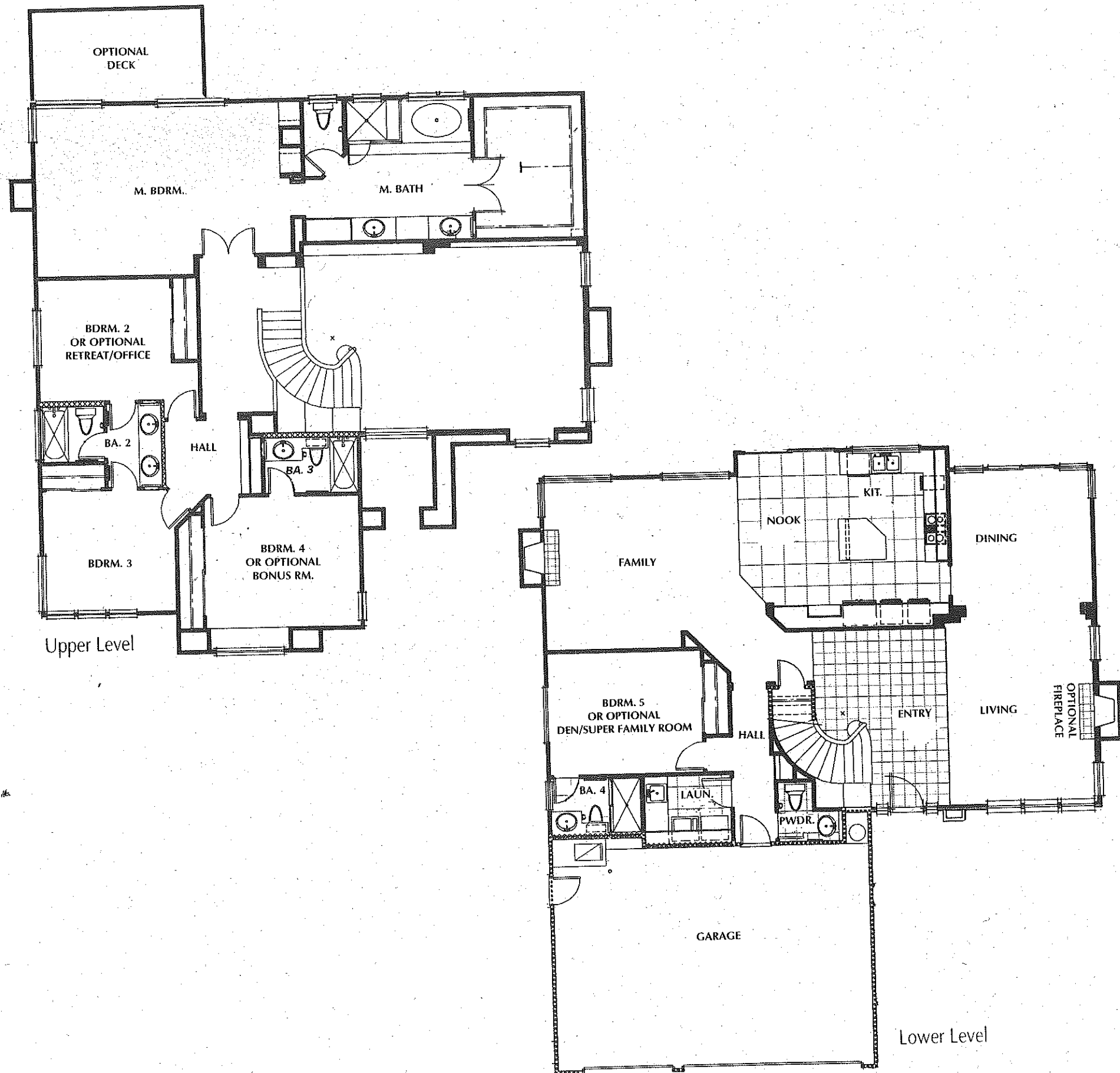


B



C

Renderings are artists concepts



Upper Level

Lower Level

The Way To Castlerock

Located in the Northbridge neighborhood of Valencia, the Castlerock community has been artfully arranged on this hillside site and will create a thoroughly livable residential atmosphere. For the most part, the homes sit on cul-de-sacs. View orientations have been maximized in every case. Schools close by are Charles Helmers Elementary and Valencia High School. The elementary school is within walking distance. The Northbridge neighborhood has four recreation centers, with tennis courts, pools, spas, basketball courts and a clubhouse. Valencia's Paseos, lighted and landscaped pathways for hiking, biking and jogging, wind throughout the community.

