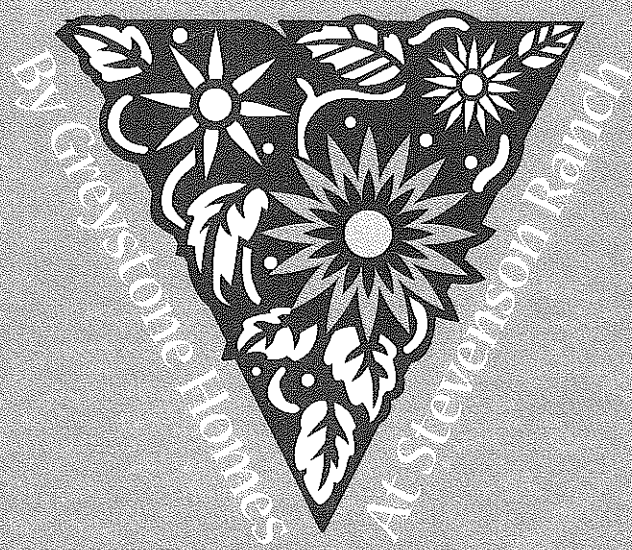


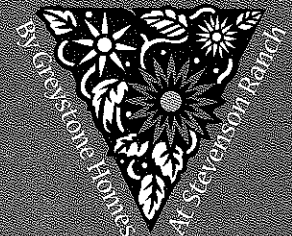
# Breton



*Exquisite French country inspired architecture.*

*It's  
going  
to be  
different  
living  
here.*

**Breton**



**M**ore than a house...

It's a neighborhood of sharing.

Where memories will be treasured.

A showplace for entertaining.

Your haven to escape to.

A retreat for dreaming.

Your home to cherish.

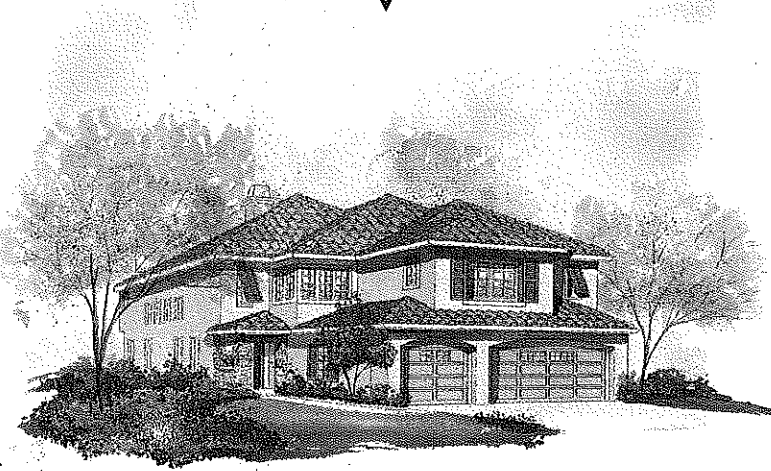
**Breton**

*It's going to be different living here.*

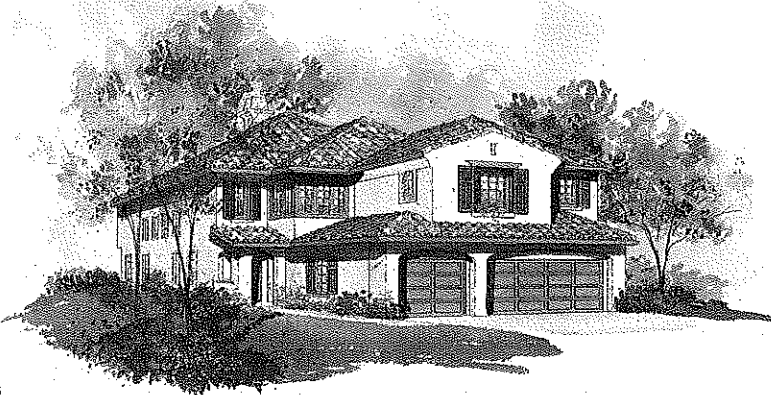
Five Bedrooms  
 Three Bathrooms  
 2,873 Sq. Ft



Optional Den  
 Optional Bonus Room



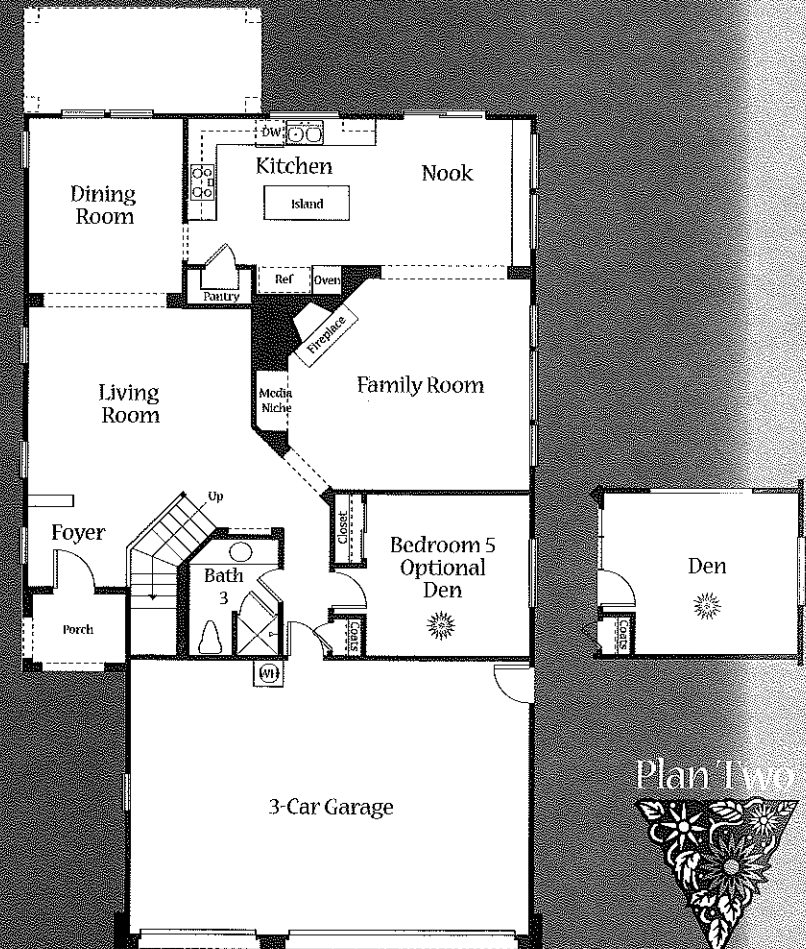
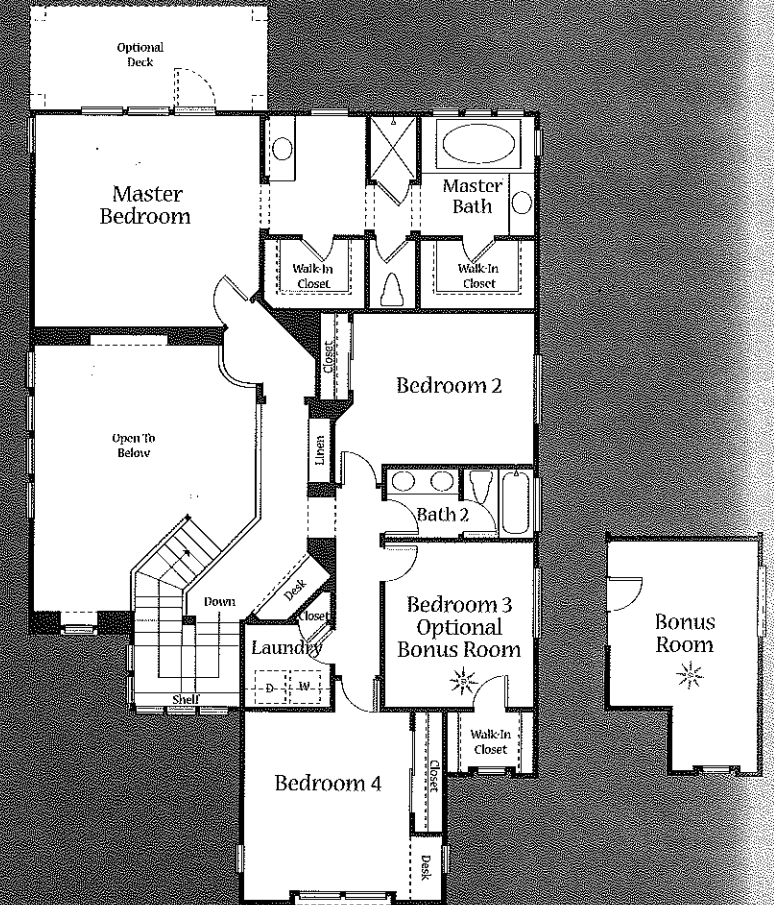
2A



2B



2C



In an effort to continuously improve our product, Greystone Homes reserves the right to change floor plans, specifications and materials without prior notice. Variations in floor plans, windows and elevations do exist; square footage is approximate and will vary.



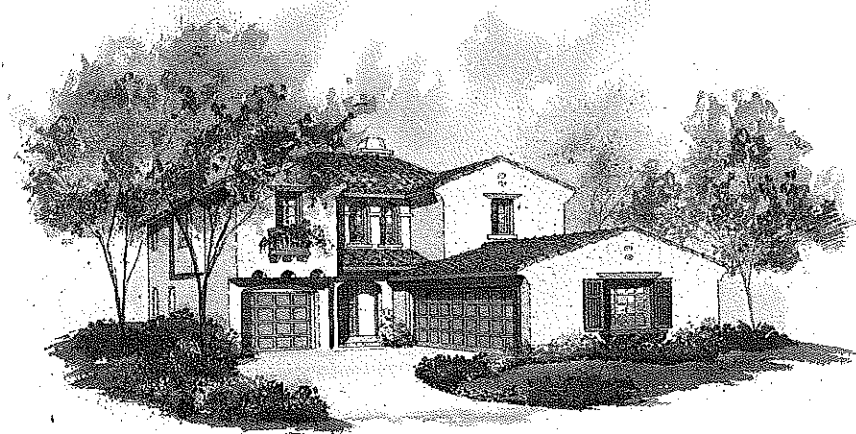
Four Bedrooms  
Two and One-Half Bathrooms  
2,525 Sq. Ft.



Optional Bedroom 5  
with Bath 4  
Optional Bonus Room  
Optional Den  
Optional Retreat



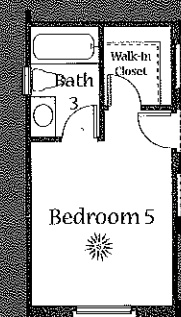
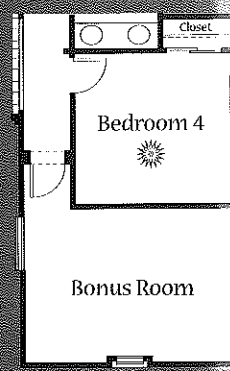
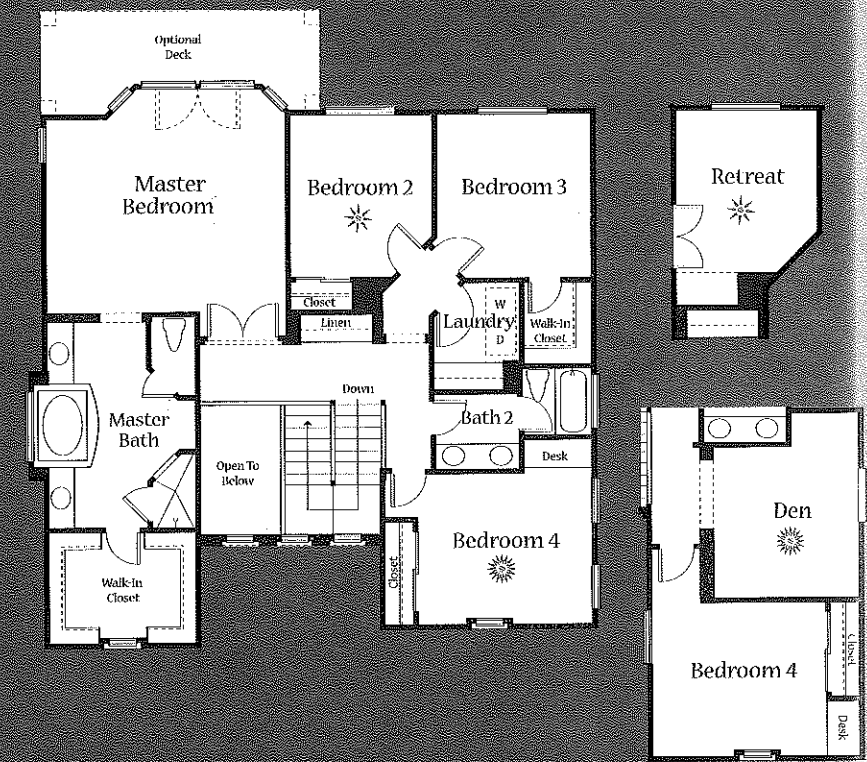
1A



1B



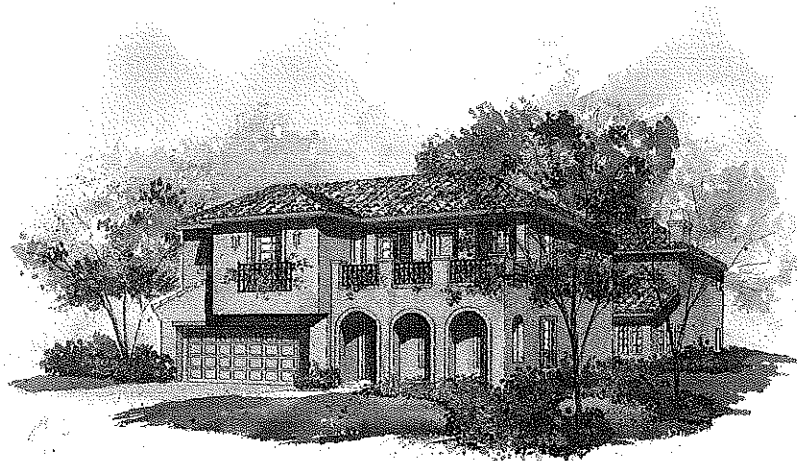
1C



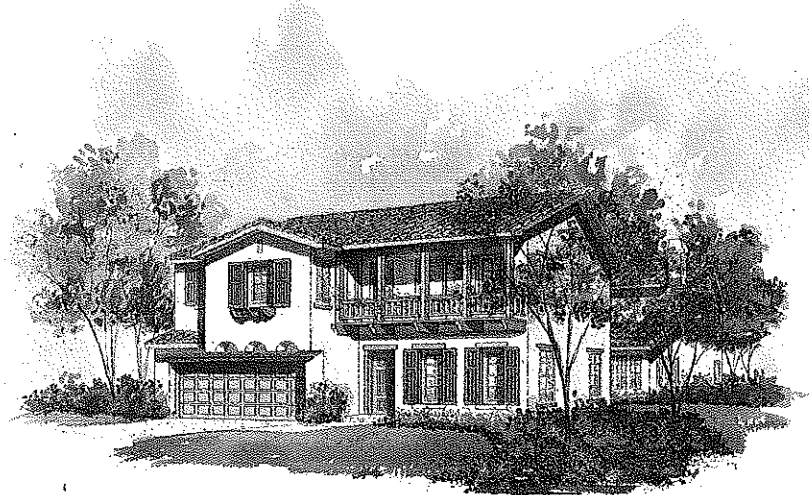
Four Bedrooms  
 Three Bathrooms  
 3,042 Sq. Ft.



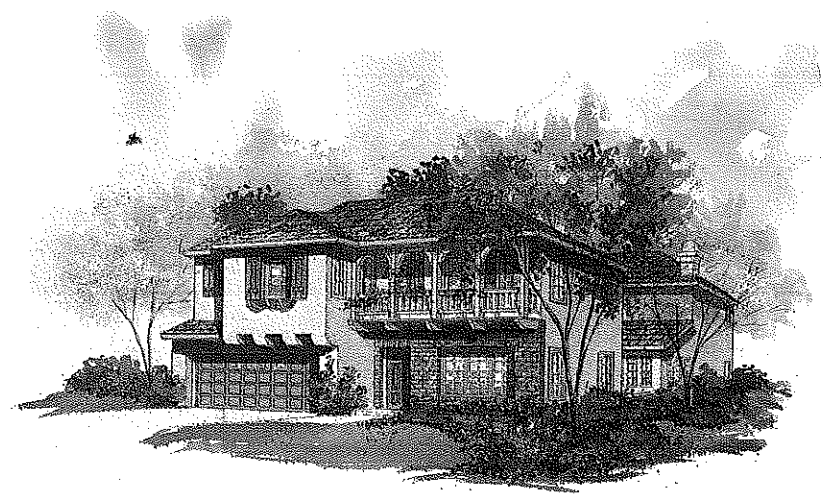
Optional Bedroom 5  
 Optional Den



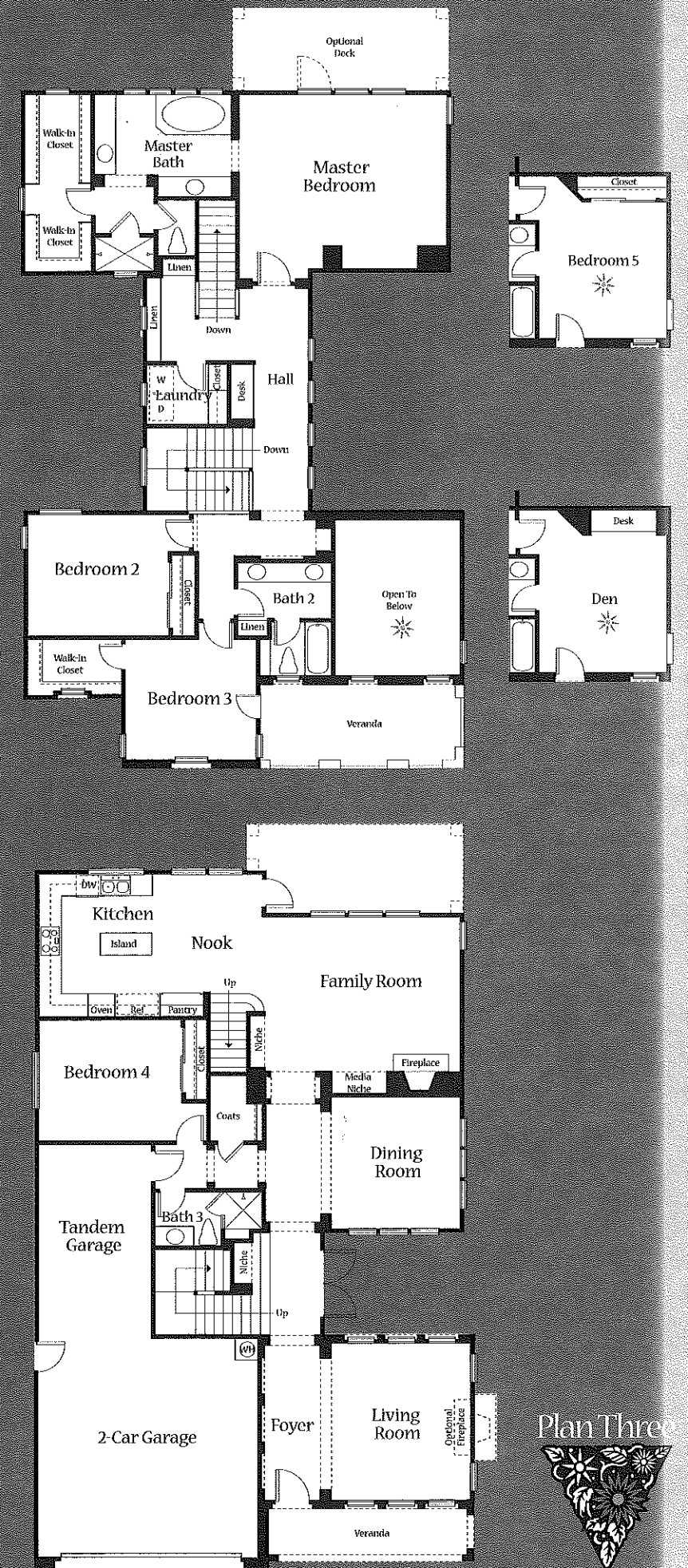
3A



3B



3C



In an effort to continuously improve our product, Greystone Homes reserves the right to change floor plans, specifications and materials without prior notice. Variations in floor plans, windows and elevations do exist; square footage is approximate and will vary.



# Everything's Included

## Deluxe Features

Architecturally coordinated exterior colors with fire-resistant concrete tile roofs  
Sectional roll-up garage doors with opener  
Complete side and rear yard fencing for privacy  
Gas stub in rear yard for future barbeque  
Painted, raised panel eight foot front entry doors  
Gutters and downspouts in select locations  
Exterior outlet with inside switch for holiday lighting

## Stylish Interiors

Ceramic tile entry flooring  
Elegant wall-to-wall carpeting with a wide array of color selections  
Art niches  
Custom radius wall corners  
Kitchen opens to spacious family room  
Traditional two-panel interior doors with decorative antique nickel hardware  
Mirrored by-pass closet doors in secondary bedrooms (in select plans)  
Media niche in family room  
Pre-wired for cable television in all bedrooms and family room  
Pre-wired with high speed Category 5 telephone wiring  
Light texture on walls and ceilings  
Wood burning fireplace with glass panel doors  
Solid oak stair handrail with white wood spindles  
All bedrooms wired to accept ceiling fans

## Spacious Kitchens

Hand-set ceramic tile countertop  
European style white matte cabinet doors with vinyl interiors and adjustable shelves in upper cabinets  
Quality GE™ white-on-white appliance package including:  
36" sealed five-burner gas cooktop  
Built-in self cleaning double electric oven  
Microwave  
Energy saving multi-cycle dishwasher  
Conveniently located storage pantry  
Compartmental cast iron sink with heavy duty waste control  
Single-lever pull-out kitchen faucet  
Refrigerator area plumbed with recessed valve for ice maker  
Convenient task lighting  
Gourmet center island

## Elegant Master Bedroom Suite and Bath

White matte cabinetry with ceramic tile countertop  
Dual vitreous china vanity sinks with buyer preferred Moen™ combination chrome and brass fixtures  
Compartmental water closet with elongated water-saving toilet  
Generous walk-in closet  
Decorator-selected vanity lighting  
Luxurious oval tub and separate shower with ceramic tile surround  
Double-sided mirrored closet doors  
Coffered ceilings

## Secondary Baths

Handset ceramic tile pullman with Moen™ chrome fixture  
Decorator bar lighting  
Tub/shower with ceramic tile walls  
White matte cabinetry

## Special Features

Silent touch Decora electrical switches  
Wood window sills on most windows  
Squeak resistant upper floors  
Smoke detectors throughout  
Dual forced air heating and air conditioning systems with night set-back thermostats for energy savings

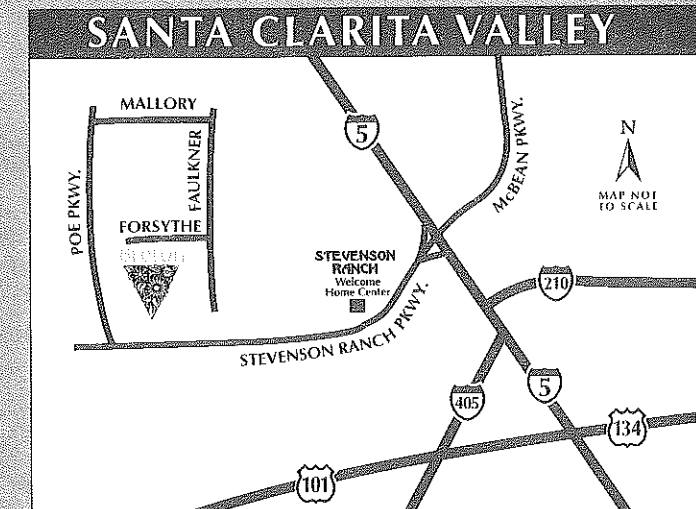
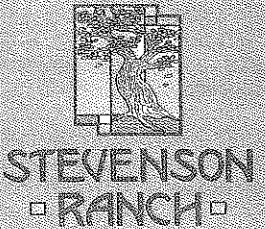
## Energy Efficient Features

Combination aluminum and vinyl dual glazed windows and aluminum patio door  
Energy efficient 50 gallon water heater  
Water saving toilets  
Economical gas forced-air heating with pilotless ignition  
Gas hook-up in laundry area  
Full weather-stripping on all exterior doors  
Low voltage exterior address light

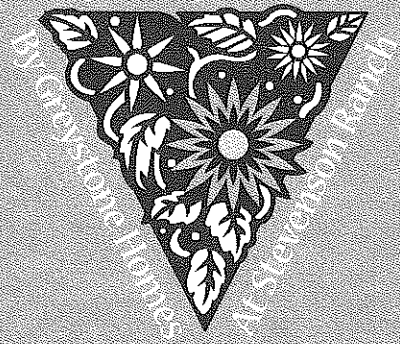
## Custom Enhancements

Breton offers a wide variety of custom enhancements to allow your home to be tailored to your lifestyle. Prices and availability may vary according to the construction status of each home. Please discuss prices and availability of enhancements with your new home consultant at the time of your purchase.

Prices and availability may vary according to the construction status of each home. In an effort to continuously improve our product, Greystone Homes reserves the right to change floor plans, elevations, specifications, materials and prices without prior notice. Variations in the floor plans, window placement and elevations do exist; all square footage is approximate and will vary. Please see new home consultant for further details.



# Breton



25842 Forsythe Way  
Stevenson Ranch

California 91381

661.799.8135

661.799.8137 FAX