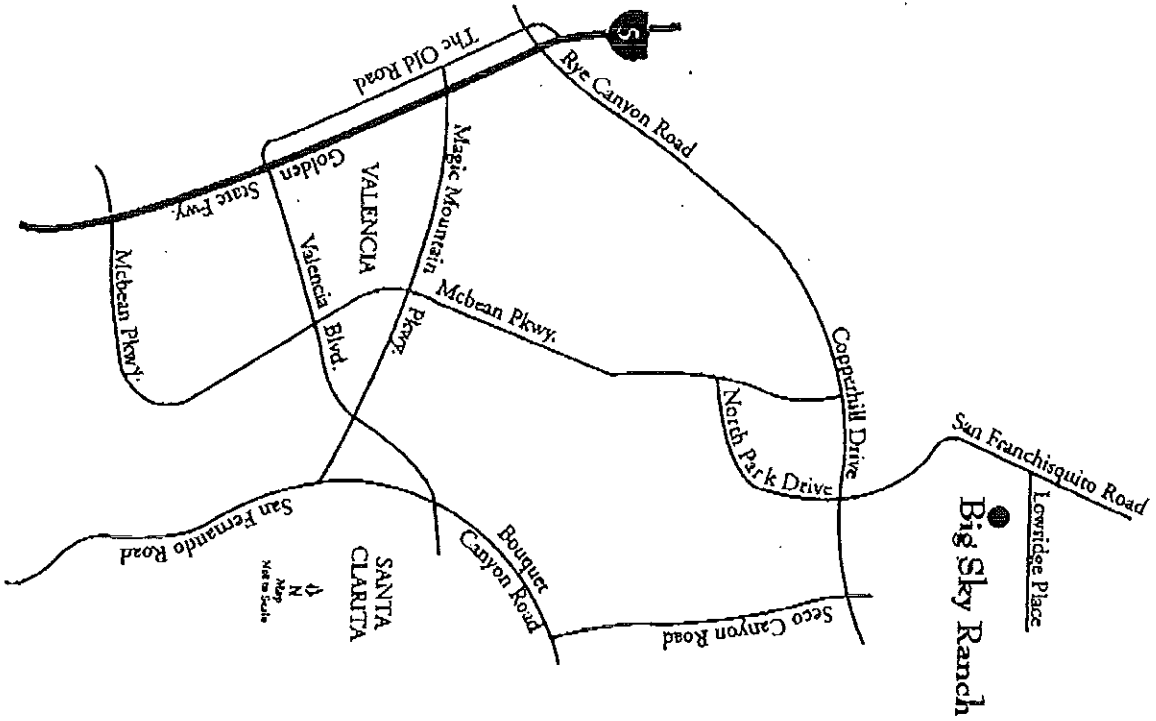




# Big Sky Ranch

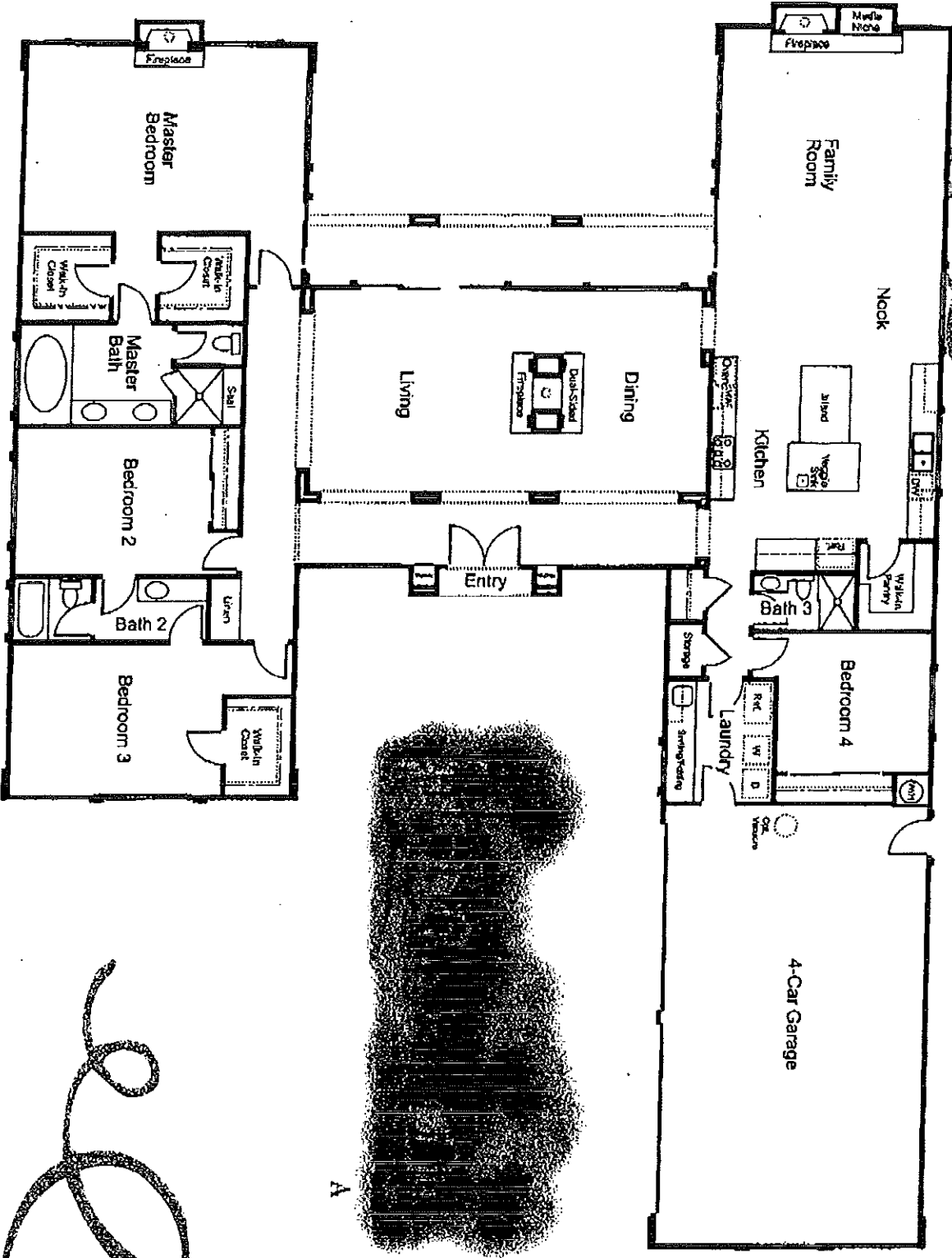


Paul Morad  
Realty Executives  
(661) 286-8787



# Plan One

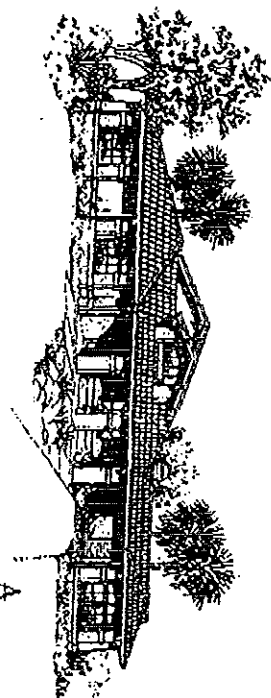
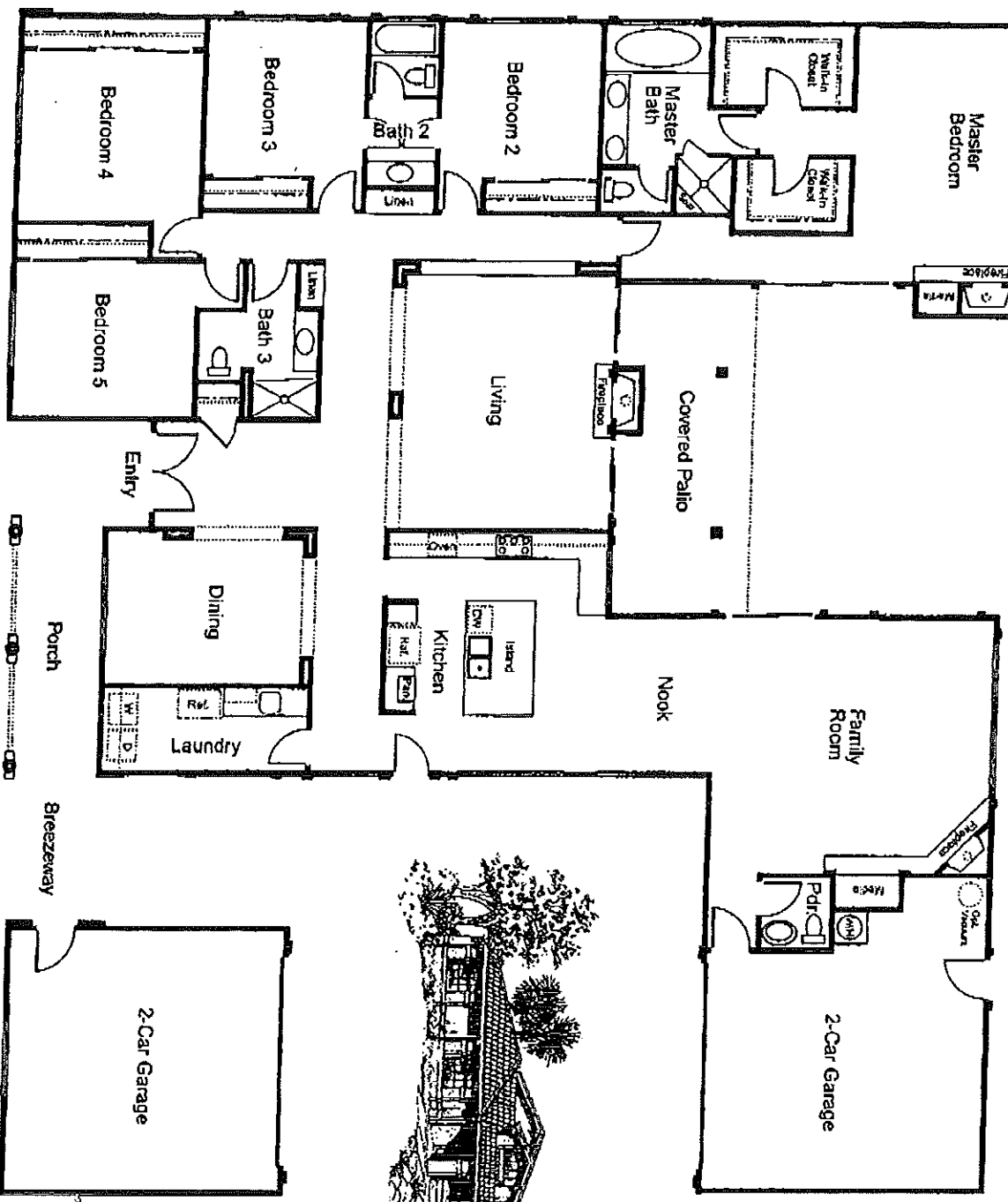
• 3,508 Square feet • 4 Bedrooms • 3 Baths • 4 Car garage



A

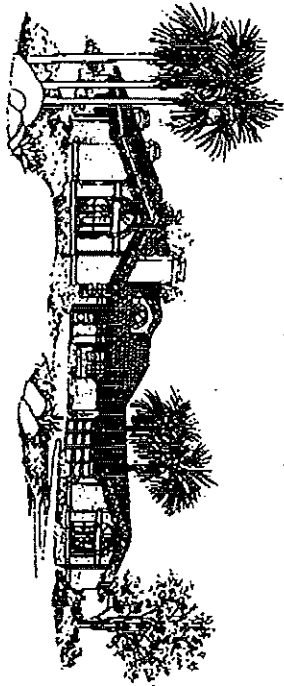
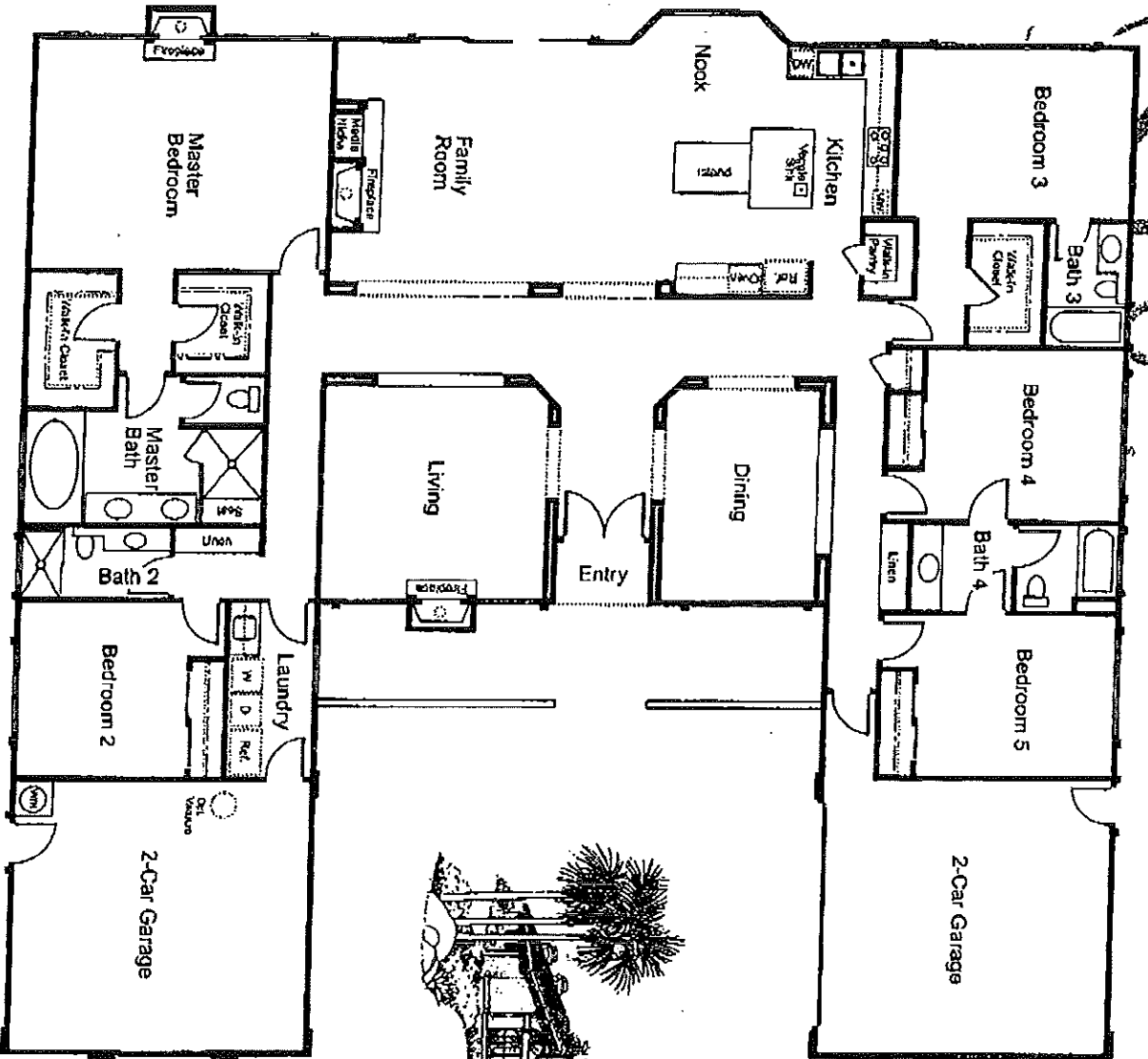
# Plan Two

• 3,900 Square feet • 5 Bedrooms • 3 1/2 Baths • 4 Car garage



# Plan Three

• 3,652 Square feet • 5 Bedrooms • 4 Baths • 4 Car garage



# Distinctive Features

## Unique Surroundings

- Premier enclave of 11 single-story ranch homes
- Expansive homesites
- Exceptional views on select homesites
- Close proximity to neighborhood conveniences

## Distinctive Exteriors

- Impressive ranch-style architecture with brick veneers
- Double-entry doors with decorative detail
- Spacious four-car garage with finished interior
- Roll-up steel garage doors with electronic opener
- Attractive, long-lasting concrete tile and composition roofing

## Graceful Interiors

- Grand entry foyer with elegant ceramic tile
- Dramatic high-volume ceilings in many rooms
- Three wood-burning fireplaces with glass door enclosure and log lighter
- Custom-quality rounded wall corners
- Decorative eight-foot raised-panel interior passage doors
- Convenient interior laundry room with sink and overhead cabinets
- Prewired telephone outlets in kitchen, master bedroom, and secondary bedrooms
- Prewired cable television outlets in family room, master bedroom, and secondary bedrooms

## True Gourmet Kitchens

- Spacious kitchen with family-sized breakfast nook
- Deluxe appliance package including:
  - ~Double oven
  - ~Built-in microwave
  - ~Gas cooktop
- Energy saving dishwasher
- Convenient center island workstation with veggie sink and disposal (Plans 1 & 3)
- Walk-in pantry with organizational shelving (per plan)
- Handset ceramic tile countertops with full tile backsplash
- Maple cabinetry with adjustable shelves
- Recessed luminous under upper cabinet lighting
- Designer selected durable vinyl flooring
- Executive style two-compartment and veggie enamel-finished cast-iron sinks with single lever faucets and waste disposals (Plans 1 & 3)
- Large three-compartment enamel-finished cast-iron sink with single lever faucet and waste disposal (Plan 2)

## Lavish Master Suites

- Over-sized his and hers walk-in closets
- Hand-finished ceramic tile countertop with backsplash
- Maple cabinetry
- Luxurious soaking whirlpool tub with ceramic tile surround

- Separate shower with clear tempered glass enclosure and handset ceramic tile floor/surround
- Designer selected dual-lever plumbing fixtures
- Private water closet

## Secondary Baths

- Maple cabinetry with ceramic tile countertop
- Bathub/shower combination with handset ceramic tile
- Designer selected dual-lever plumbing fixtures

## Energy and Safety Features

- Prewired for security alarm system
- Post-tension concrete foundation
- 75-gallon gas water heater
- Attic mount dual gas forced air heating system
- Central air conditioning system
- Smoke detectors
- White vinyl windows throughout
- Insulated exterior walls and ceilings

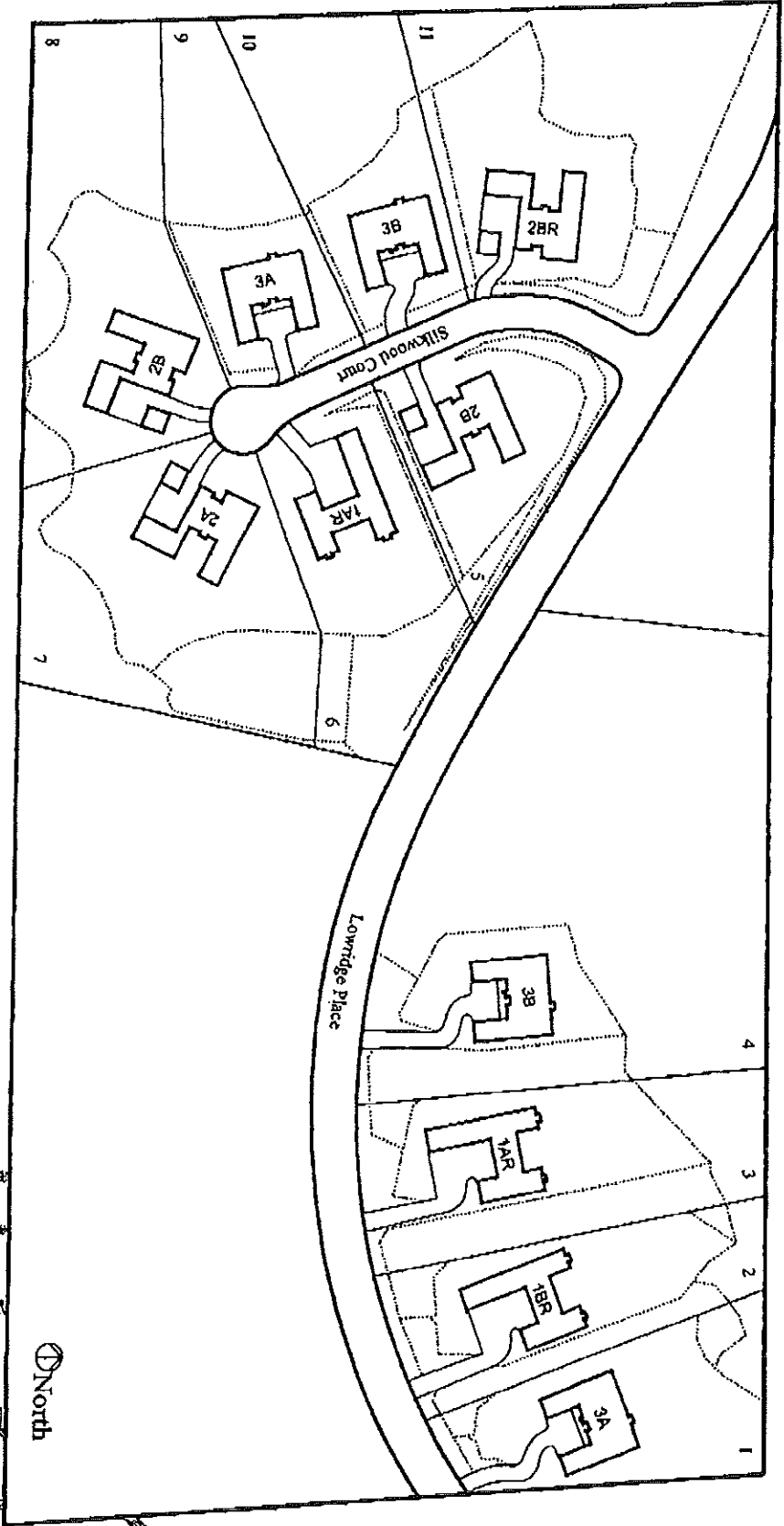
## Custom Option Features

- Many custom option features are available to personalize your home. Please ask sales representative for further details.

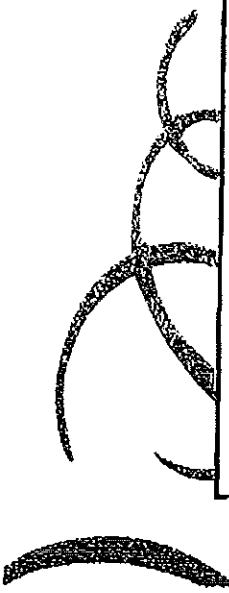
*In the interest of continued product improvement, Big Sky Ranch and Williams Homes reserves the right to change specifications, design, and prices without prior notice or obligation. All renderings, floorplans, and maps are artist's conceptions and are not necessarily to exact scale.*



# Big Sky Ranch



WILLIAMS HOMES



# Big Sky Ranch

Price List

August 9, 2002

PROPERTY ADDRESS	LOT NUMBER	APPROX. HOME SQ. FEET	LOT SIZE (ACRES)	PRICE
23091 W. LOWRIDGE PL.	1	3,652	.78	\$679,000
23093 W. LOWRIDGE PL.	2 <i>Sold</i>	3,508	.84	\$679,000
23095 W. LOWRIDGE PL.	3 <i>Sold</i>	3,508	1.11	\$684,000
23097 W. LOWRIDGE PL.	4 <i>Sold</i>	3,652	3.77	\$699,000
28824 N. SILKWOOD CT.	5	3,900	.61	\$699,000
28818 N. SILKWOOD CT.	6 <i>Sold</i>	3,508	.83	\$669,000
28804 N. SILKWOOD CT.	7	3,900	1.35	\$769,000
28805 N. SILKWOOD CT.	8 <del>8</del>	3,900	1.28	\$799,000
28817 N. SILKWOOD CT.	9	3,652	.76	\$689,000
28825 N. SILKWOOD CT.	10	3,652	.86	\$689,000
28839 N. SILKWOOD CT.	11	3,900	1.67	\$789,000