

CENTEX HOMES



One of life's rewards.

*Exceptional homes.
Exceptional lifestyle.*



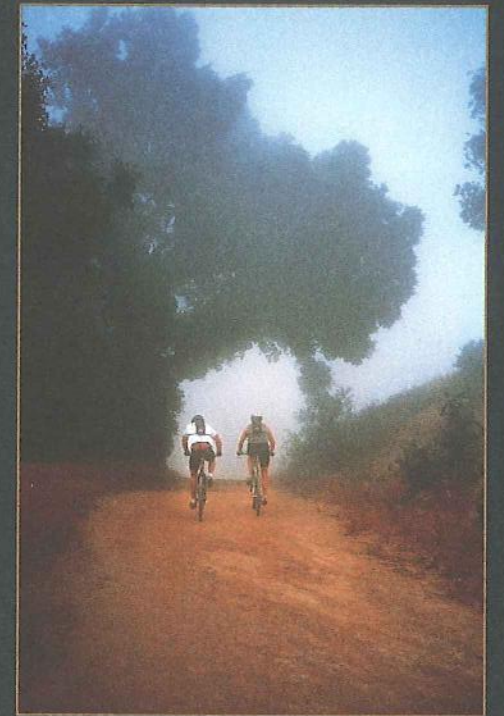
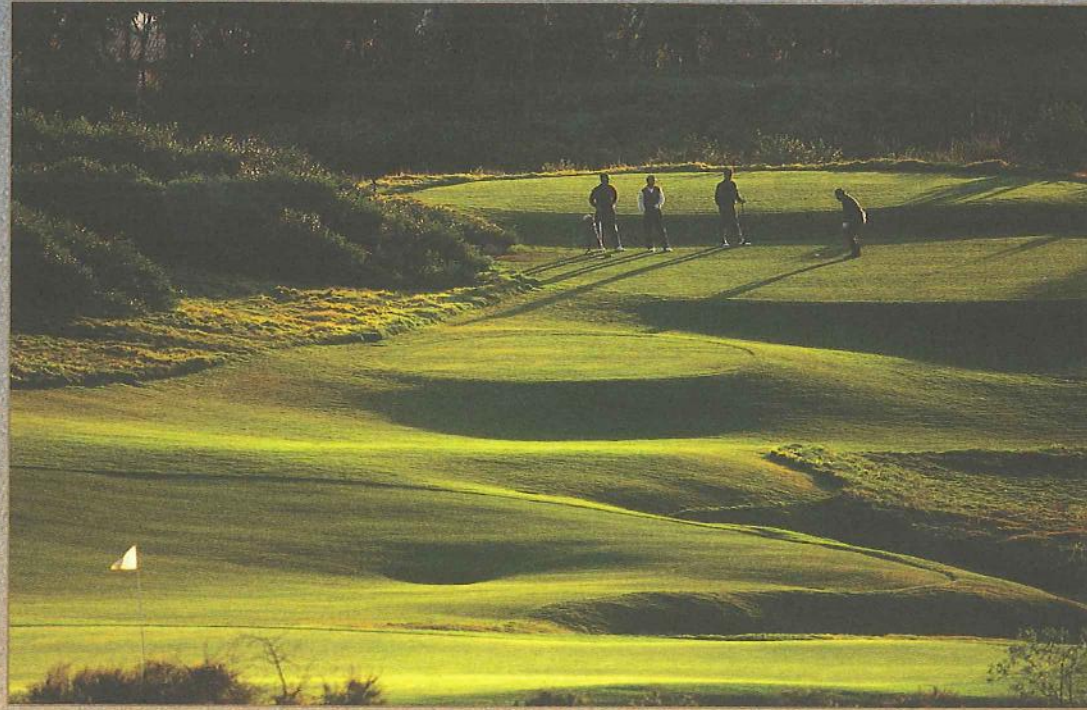
You never expected to discover a lifestyle with this much life or this much style. But, here it is.

Welcome to Bent Canyon Westridge, a spectacular neighborhood of exceptional homes nestled around a magnificent 18-hole championship golf course. Atop golden rolling hills, surrounded by impressive ancient oak trees and overlooking the lush emerald fairways and manicured greens that meander the floor of the canyon below, you will find Valencia's most desirable homes.

You'll appreciate how Bent Canyon has been created with a special sensitivity to the environment and the natural beauty of the surrounding canyons. The streetscape has been designed to include a cul de sac configuration with each home carefully positioned to offer the most impressive views and retain its natural splendor – adding to the joy of living here.

Equally inspiring are the features and amenities that make these homes so exceptional. The grand homes of Bent Canyon Westridge are from 3,119 to 3,450 square feet of luxurious living area. Each home design has been carefully created for comfort while keeping entertaining needs in mind. Distinctive architectural touches and fine craftsmanship highlight each interior. Light and spacious rooms incorporated the latest design features and styling. No detail has been overlooked in the quest to make Bent Canyon Westridge the most enviable lifestyle in Southern California.

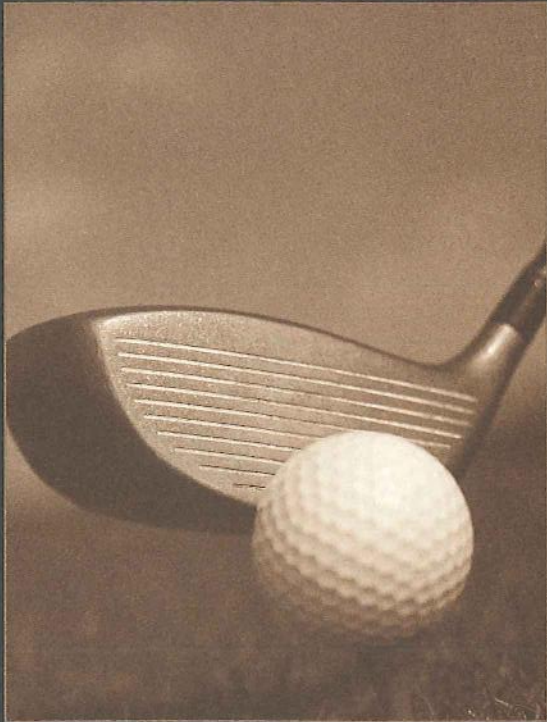
Bent Canyon Westridge offers everything you've hoped to find in a new neighborhood. Including a lifestyle that will fit you to a tee, whether you're a golf enthusiast or not.



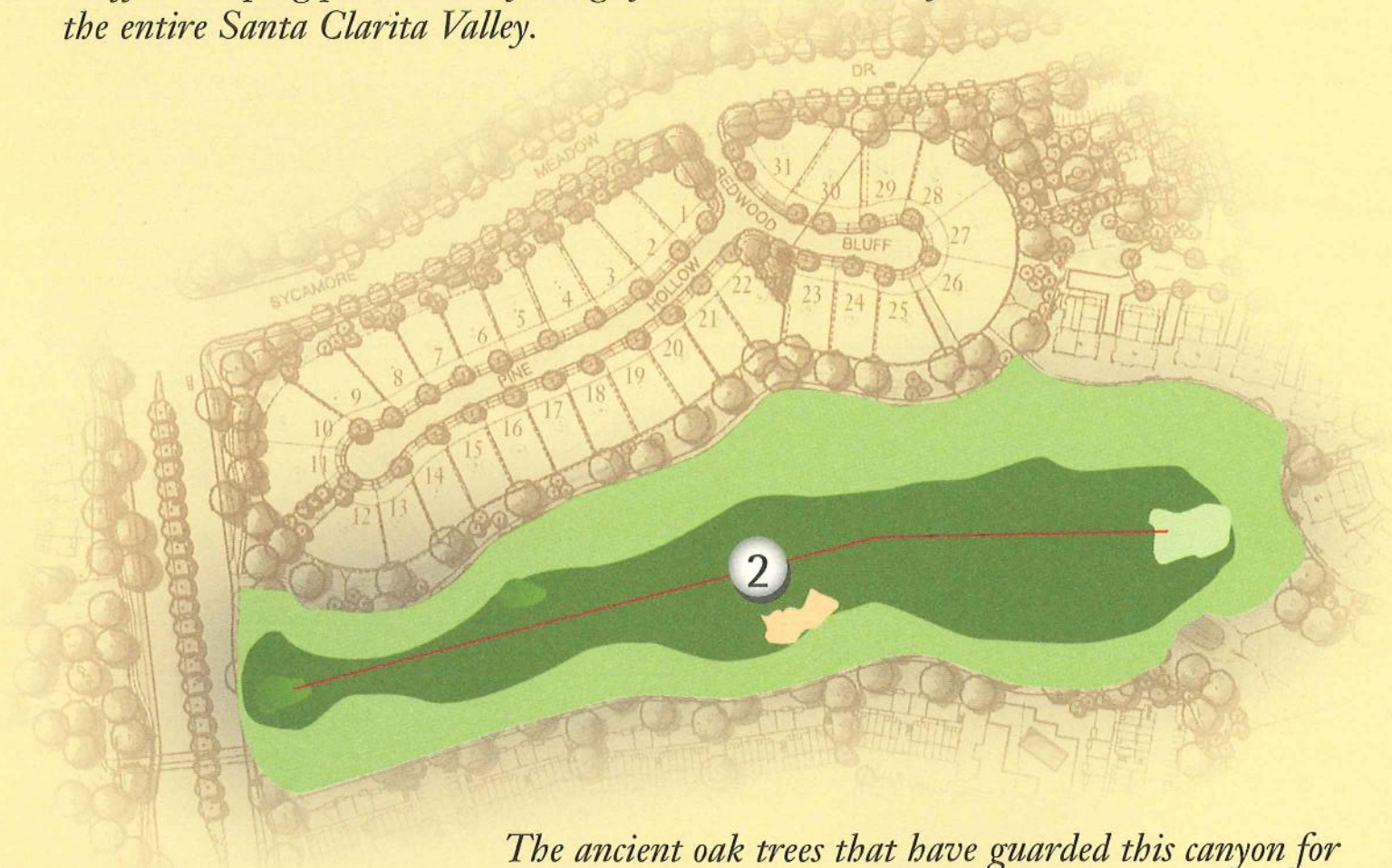
You never expected to discover a lifestyle with this much life or this much style. But, here it is.



*No other community is on a par
with Bent Canyon*



*Every viewsite home at Bent Canyon is carefully situated
to offer sweeping panoramas of the golf course and vistas of
the entire Santa Clarita Valley.*



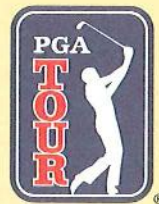
*The ancient oak trees that have guarded this canyon for
centuries have been carefully nurtured and preserved
for all to enjoy.*



8

7

6





Residence One

Approximately 3,119 Square Feet

Four Bedrooms

Three and one-half Baths

Formal Living Room

Formal Dining Room

Family Room

Nook

Three Car-garage

Optional Second Master Suite

Optional Bonus Room



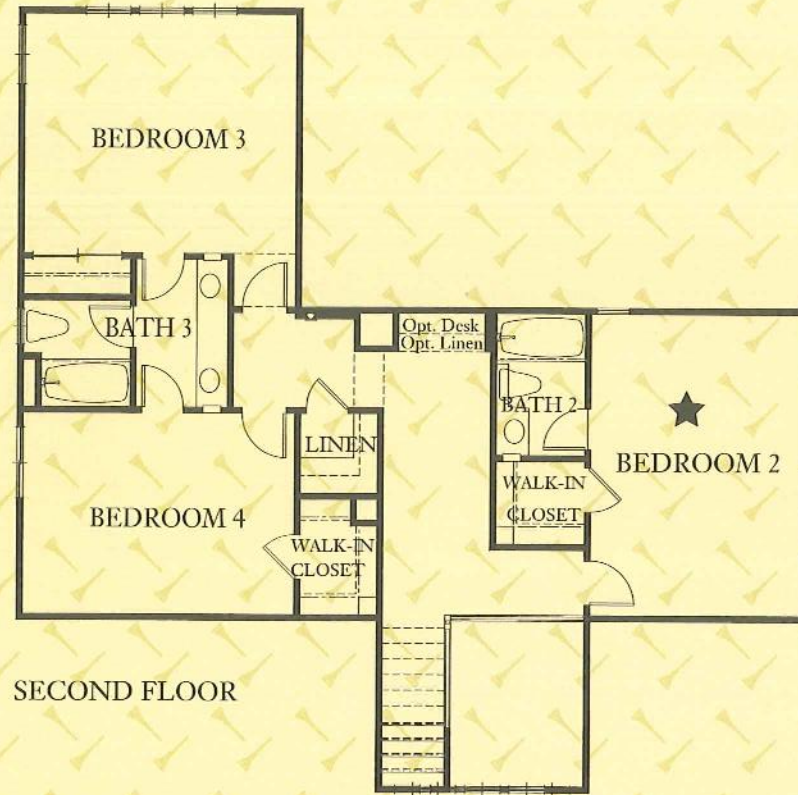
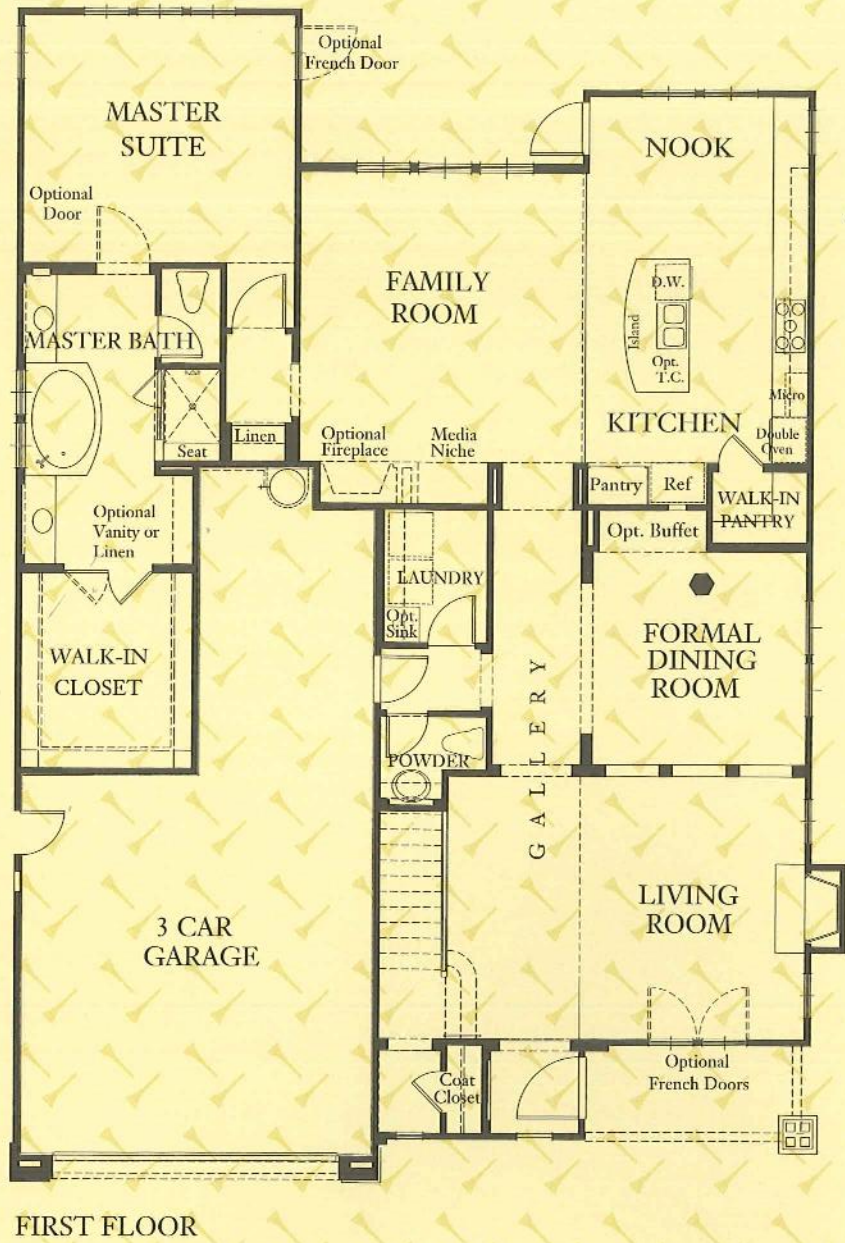
1A



1B



1D



OPTIONAL BUTLER'S PANTRY
IN LIEU OF WALK-IN PANTRY



OPTIONAL SECOND MASTER SUITE
IN LIEU OF BEDROOM 2



OPTIONAL BONUS ROOM
IN LIEU OF BEDROOM 2



Residence Two

Approximately 3,236 Square Feet

Four Bedrooms

Three and one-half Baths

Formal Living Room

Formal Dining Room

Morning Room

Family Room

Loft

Four Car-garage

Optional Bedroom Five

with Bath Four

✓
9000-4
\$649,000



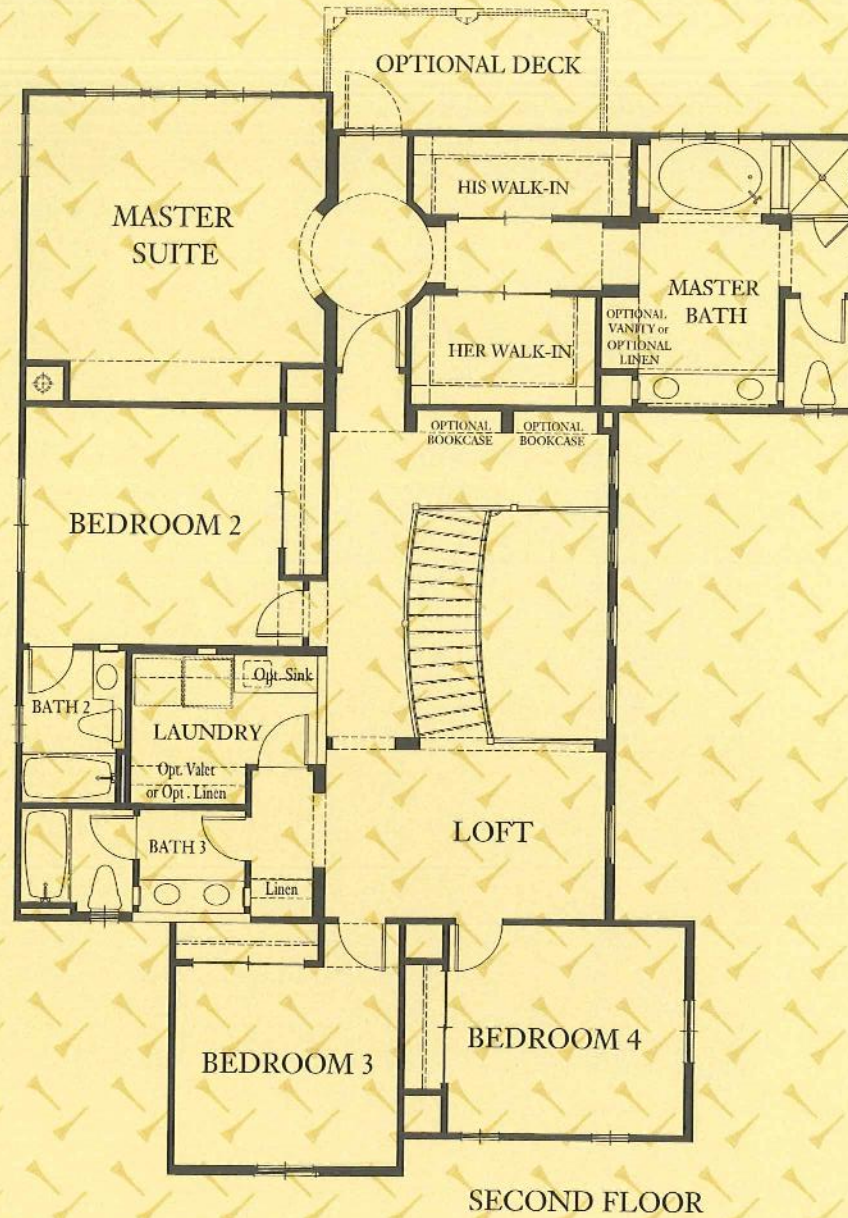
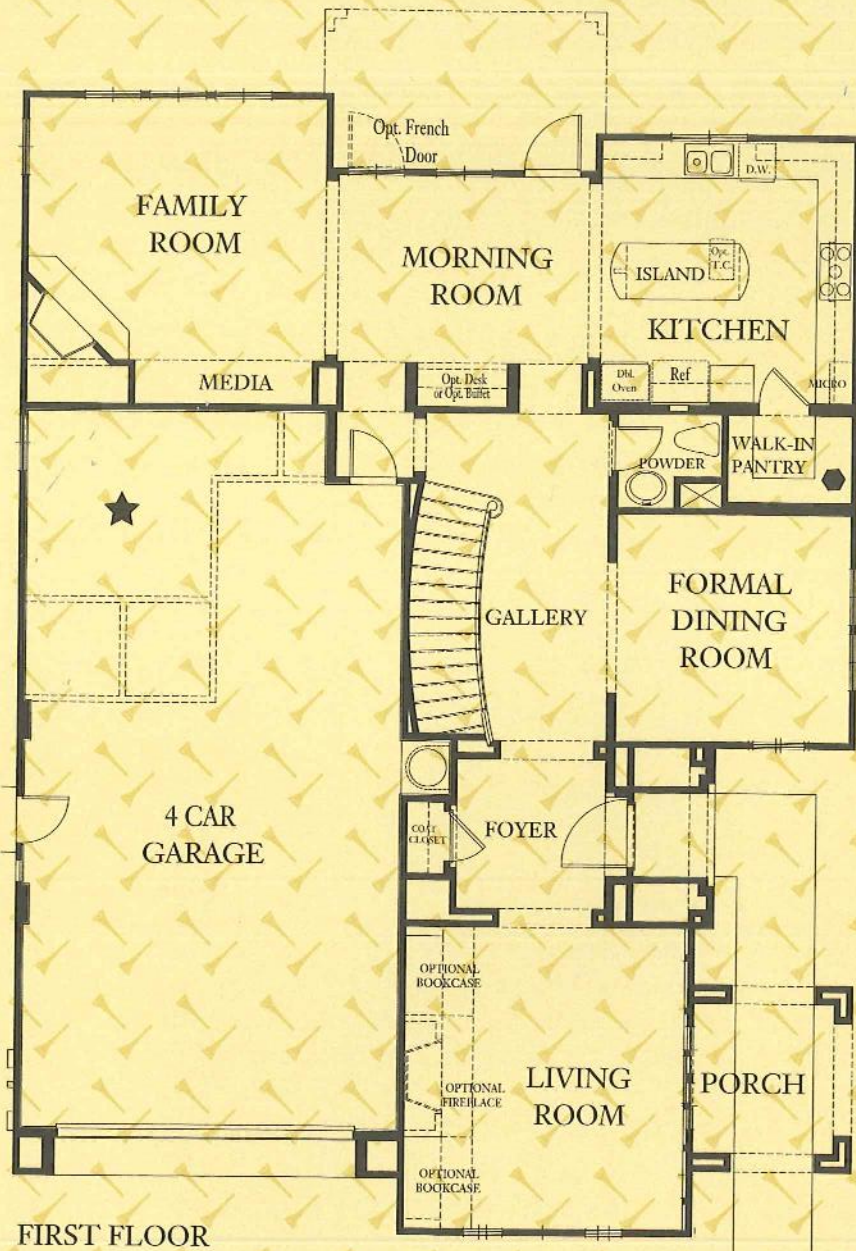
2A



2B



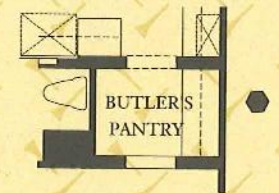
2C



OPTIONAL BEDROOM 5 IN LIEU OF GARAGE



OPTIONAL BUTLER'S PANTRY IN LIEU OF WALK-IN PANTRY





Residence Three

Approximately 3,450 Square Feet

Four Bedrooms

Three and one-half Baths

Formal Living Room

Formal Dining Room

Family Room

Morning Room

Bonus Room

Four Car-garage

Optional Bedroom Five



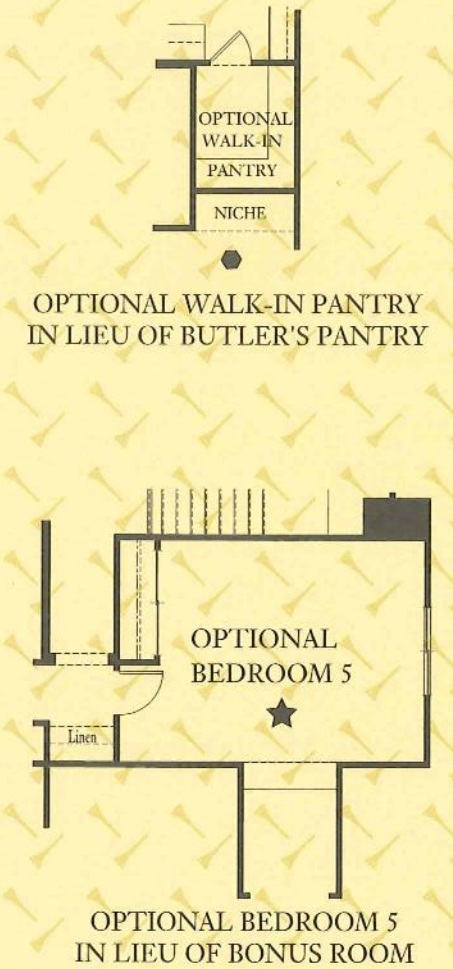
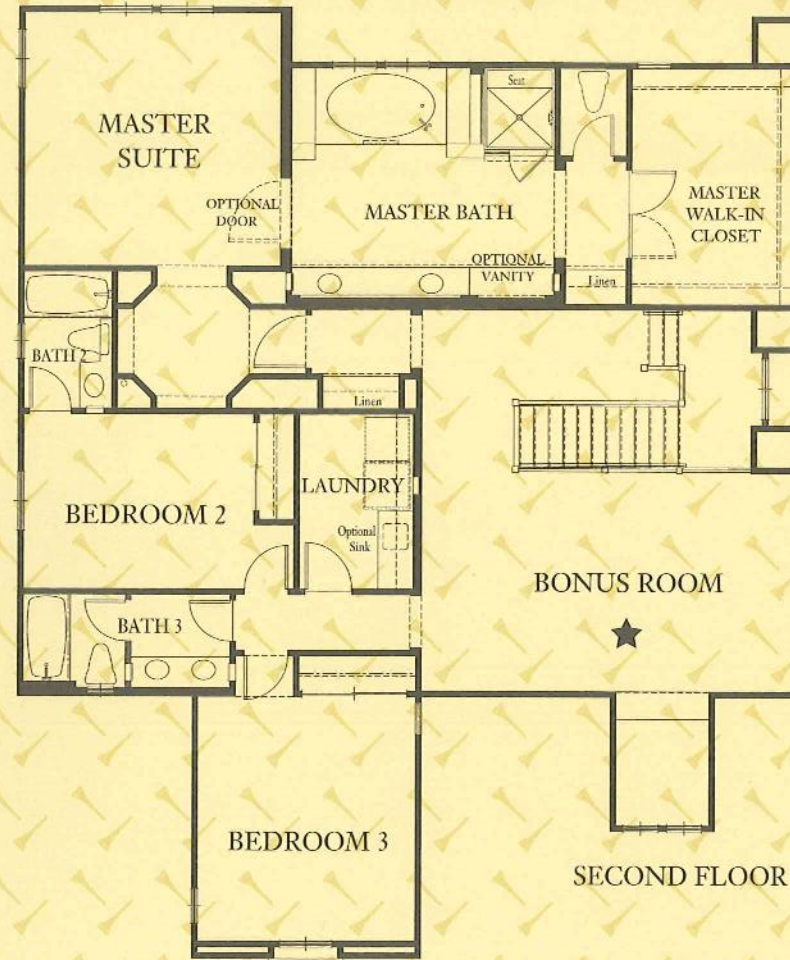
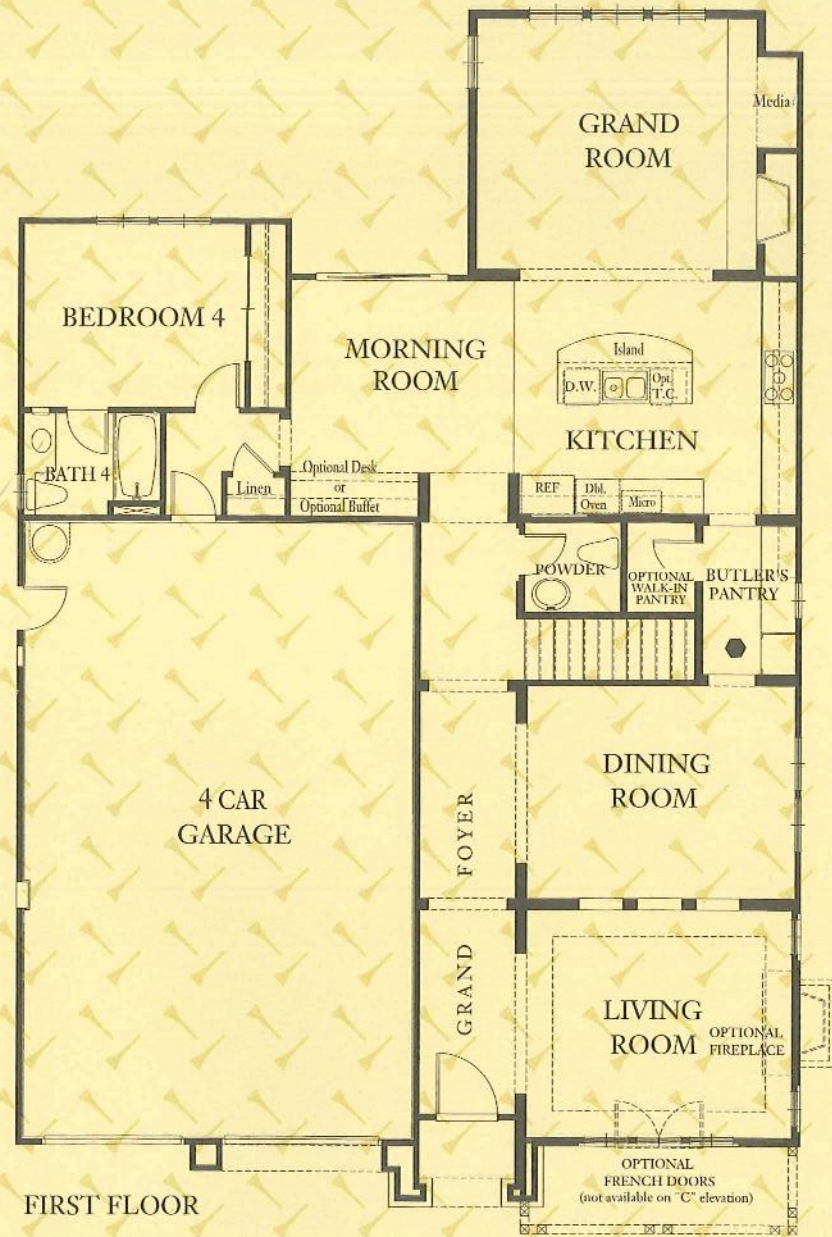
3A



3B



3C



Welcome to Bent Canyon at Westridge

Architecturally distinctive exteriors

- Professionally-selected exterior color schemes
- 3- and 4-car garages with roll-up sectional doors and automatic opener and two transmitters
- Drywalled garages
- Fire-resistant concrete tile roof
- Architecturally distinct 8' raised panel entry doors
- ComfortWise Energy Advantage program
- Additional 10 year limited warranty

Distinctive Features

- 12" x 12" Ceramic tile entry
- Enameled staircase featuring turned balusters, turned newels, tread ends, skirts, kickboards and continuous handrail
- 42" wood burning gas fireplace with decorative precast surround
- 8' Raised panel Colonist doors throughout the first floor
- Window wood stool and apron
- Spacious linen closets/cabinets
- Indoor laundry room
- Enameled baseboards throughout
- Andersen French doors
- Prewired for cable TV in master bedroom, secondary bedrooms and family room - High Speed RG6 Quad Shielded
- Prewired for telephone in master bedroom, secondary bedrooms and Kitchen - High Speed CAT 5 E
- Dual Heat and Air-conditioning System
- Designer selected lighting fixtures
- Gas Stub for BBQ

With the Cook in Mind

- Maple cabinetry with adjustable shelves and dual glide drawers
- Upgraded 6"x 6" hand-set ceramic tile counter tops and 6" back splash

- Full Whirlpool® appliance package which includes 30" built-in convection and self-cleaning double oven, built-in 36" 5-burner gas cooktop with 36" hood, built-in microwave oven and a dishwasher in your choice of black or white
- Kitchen island and breakfast bar
- Recessed lighting
- Undercounter task lighting

Elegant Master Suites

- Oversized tub and separate 6"x 6" hand-set ceramic tile shower with custom clear glass shower door with floating hinges and handle
- Chrome finished hardware
- Maple cabinetry
- Spacious walk-in closets

Secondary Baths

- 4 ¼" x 4 ¼" ceramic tile counter tops
- 4 ¼" x 4 ¼" ceramic tiles shower and tub surround
- Recessed lights
- Chrome finished hardware
- Maple cabinetry

Optional Opportunities

- Additional fireplaces
- Rear Deck (Plan 2)
- Handcrafted Built-ins
- Custom staircase packages
- Finish carpentry upgrades
- Surround Sound systems
- Closet systems
- Granite countertops
- Trash compactor
- Refrigerator
- Washer/Dryer
- Whirlpool Dryclean Valet
- Laundry sink

- Jetted tub
- Intercom
- Central Vac
- Shutters
- Area Rugs
- Appliance upgrades
- Cabinet upgrades
- Faucet finish upgrades
- French doors
- Water softener (Osmosis system)

Andersen windows and patio doors bring a new level of quality and distinction to your home. Andersen features the high quality craftsmanship and materials that make their product so efficient - and so popular. The glass, the construction, the exterior protection and the warranty are all part of a long-standing commitment to building the best doors and windows you can buy.



Centex Homes reserves the right to change floor plans, specifications, and prices without prior notice. Such changes may not always be reflected in our models.

Each home has been designed with a selection of advanced materials that have been carefully integrated with the highest consideration for energy efficiency.

The exterior color scheme of each home has been professionally pre-selected and coordinated and is not subject to change.

All renderings, floor plans and maps are artist's conception and are not intended to be an actual depiction of the building, fencing, walks, walls, driveways or landscaping.

All square footages are approximate.

Window and deck locations or sizes may vary. Garage locations/parking may vary by plan/elevation.

Please see our Sales Representative should you have any questions.

We are pledged to the letter and spirit of U.S. policy for the achievement of equal housing opportunity throughout the nation. We encourage and support an affirmative advertising and marketing program in which there are no barriers to obtaining housing of race, color, religion, sex, handicap, familial status, or national origin.



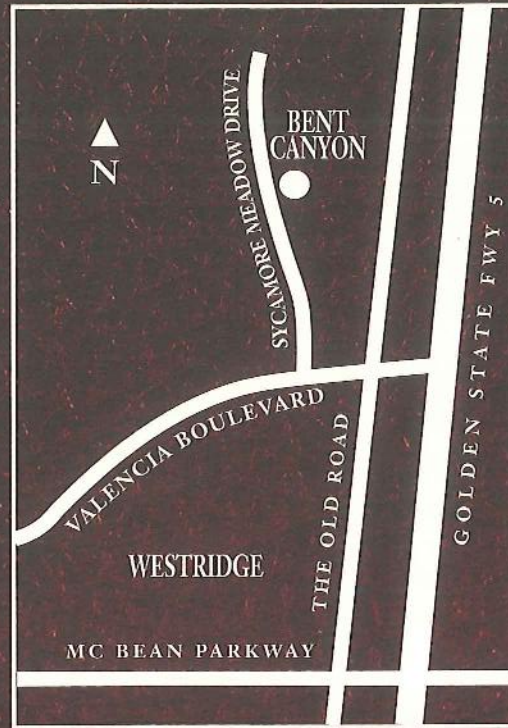
CENTEX HOMES

A Passion for Living Since 1950

Centex Homes is America's Home Builder. We don't just build homes...we build neighborhoods.

Centex Homes is as solid as the Centex home you are about to buy. Centex has the highest rating among public homebuilders from both Moody's and Standard and Poors and also has the largest capital base in the nation's home building industry. As a publicly-traded company on the New York Stock Exchange since 1969, Centex currently builds in more than 85 markets in 25 states and Washington D.C. Since 1950, Centex Homes has built over 350,000 homes nationwide and expects to deliver an additional 25,000 homes, or more, this year.

Centex Homes was founded in Dallas, Texas ("CENTral TEXas") in 1950. Today Centex Homes proudly maintains the same national reputation for consistently high quality, value and customer satisfaction that started nearly half a century ago. Our mission is to build quality homes and neighborhoods that exceed the expectations we have established with our customers.



26940 Redwood Bluff Lane, Valencia, California 91381 661 259.2643 Fax 661 259.9452

Architecture: William Hezmalhalch Architects; Interior Design: Interior Lifestyles Inc.;
Sales Office Design: Outdoor Dimensions; Landscape Design: L.A. Group; Advertising and Marketing: Gaudette Design, Inc.

Valencia
BUILT AS PROMISED
by
NEWHALL LAND.

CENTEX HOMES
A Passion for Living Since 1950