



# ACACIA II

*A Western Pacific Housing Community*

## Residence One

- 1,690 square feet • 2 bedrooms • Loft (Optional bedroom 3) • 2½ baths  
• Formal living room • Formal dining room • Family room • Gourmet kitchen  
• Breakfast nook • Attached 2-car garage

\$ 224,990

## Residence Two

- 1,725 square feet • 3 bedrooms • 2½ baths  
• Formal living room • Formal dining room • Family room • Gourmet kitchen with island  
• Breakfast nook • Attached 2-car garage

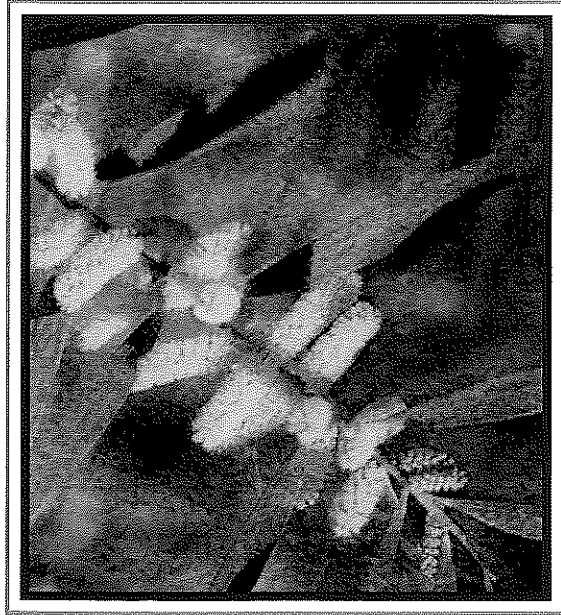
\$ 235,990

## Residence Three

- 1,888 square feet • 3 bedrooms • Loft (Optional bedroom 4) • 2½ baths  
• Formal living room • Formal dining room • Family room • Gourmet kitchen with island  
• Breakfast nook • Attached 2-car garage

\$ 239,990

28415 Silverking Trail, Santa Clarita, CA 91350 • 661.263.9289 • Fax: 661.263.7319  
[westernpacifichousing.com](http://westernpacifichousing.com)



# ACACIA II

Travel back to Classic Los Angeles, a time of intrigue and romance. The entire city sparkled with novelty, the streets were friendly, and a person's home was the source of great pride.

Offering the same blend of art and craftsmanship as its predecessor, Acacia II captures the essence of this special era, offering charming homes reminiscent of the neighborhoods that were the toast of Bel Air and Westwood in the 1920s and 1930s. Add to that a location nestled amid the rolling hills of Santa Clarita in the coveted Haskell Canyon Ranch masterplanned community.

Gracious floorplans offer up to 1,888 square feet and a vast array of customizing options, along with the quality construction which has made Western Pacific Housing so renowned. This community also offers a private pool and spa area. And with close proximity to award-winning schools, shopping, parks, and nature trails, Acacia II is the ideal community for today's growing family.

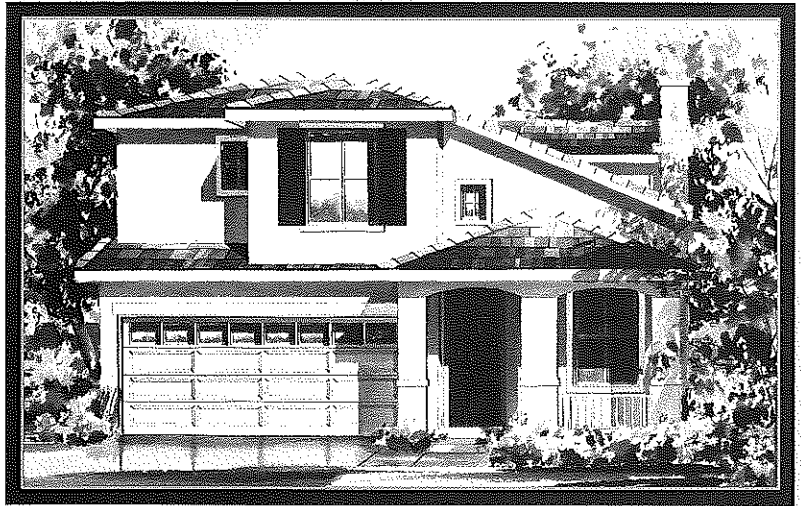
Welcome to Acacia II,  
where your way back when  
is here and now.

# Residence One

1A



1B



Model Elevation

1C

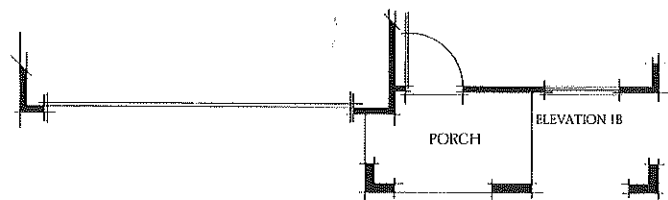
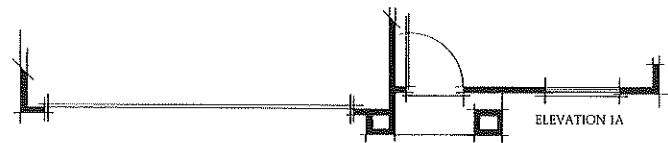
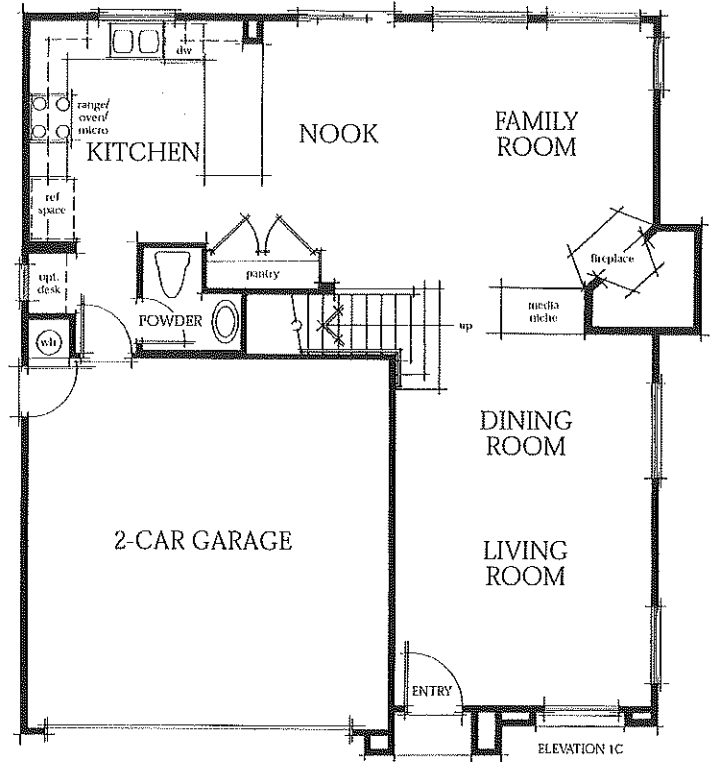
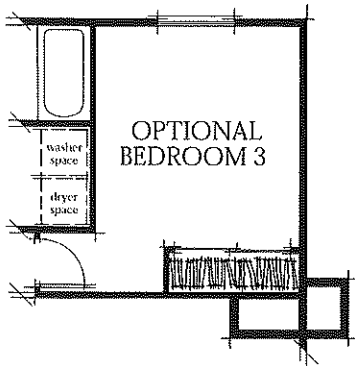
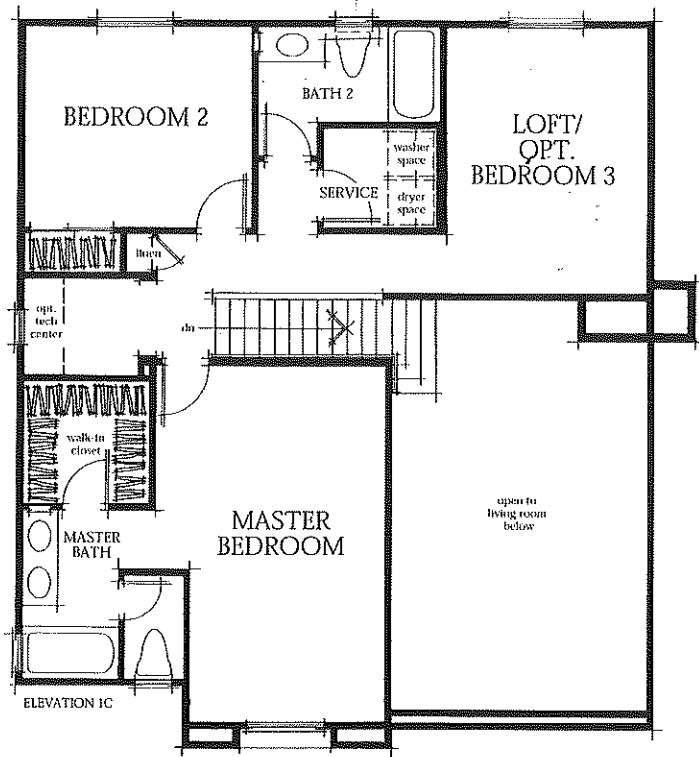


28415 Silverking Trail, Santa Clarita, CA 91350 • 661.263.9289 • Fax: 661.263.73 9  
westernpacifichousing.com

Western Pacific Housing reserves the right to make changes to plans and specifications without prior notice. Please see your Sales Representative for details. 1/4/00



# 2nd Floor



1,690 square feet

2 bedrooms • Loft • 2½ baths

Formal living room • Formal dining room • Family room

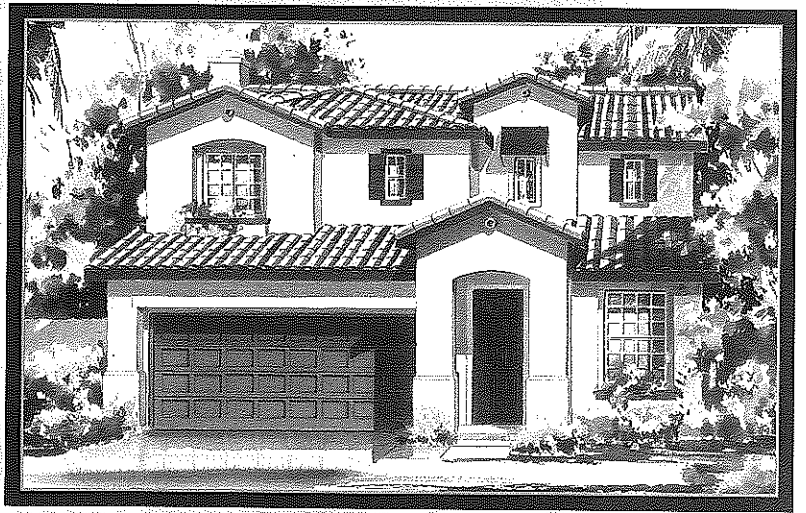
Gourmet kitchen • Breakfast nook

Optional bedroom 3 • Attached 2-car garage

# 1st Floor

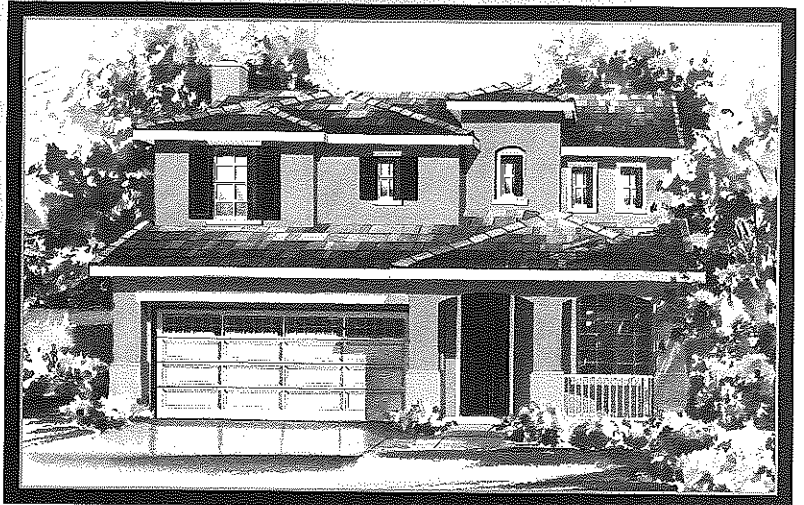
# Residence Two

2A

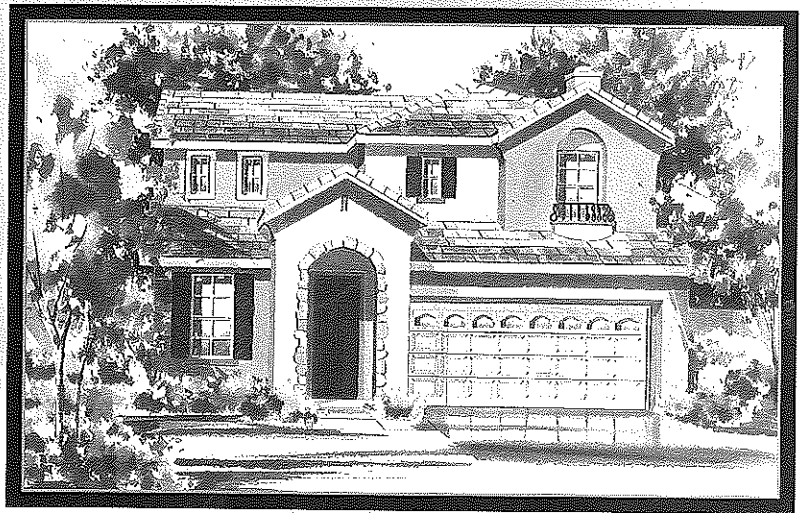


Model Elevation

2B

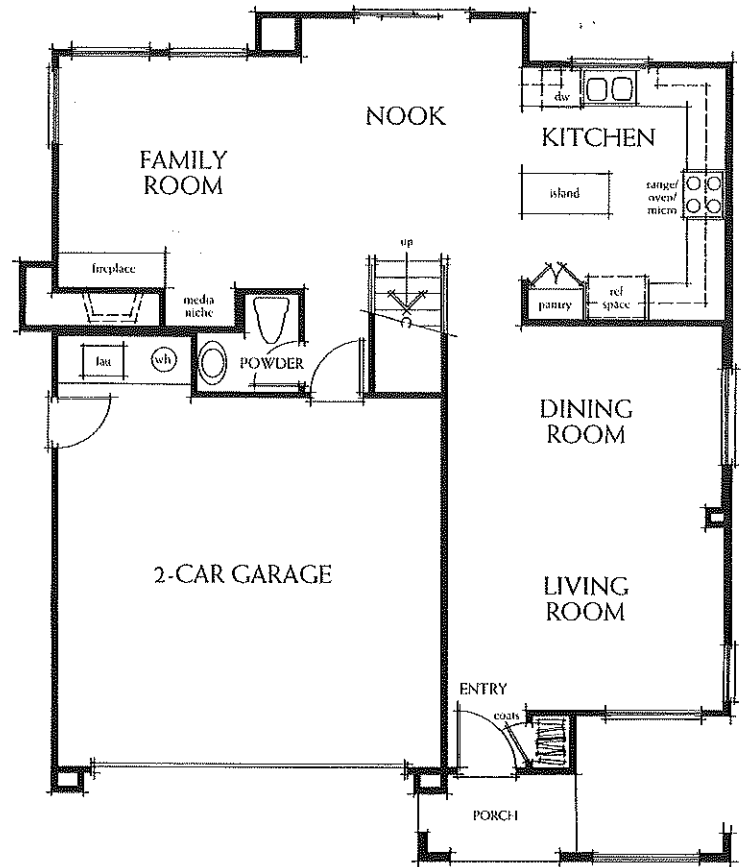
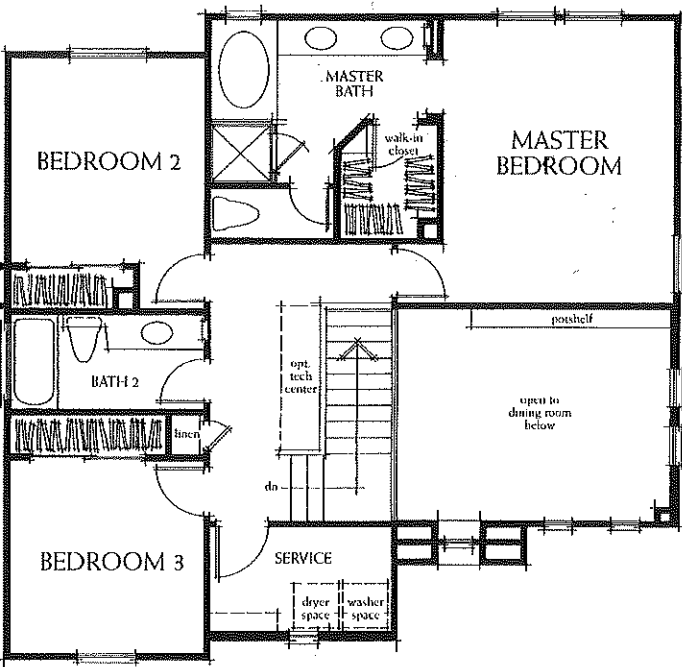


2CR

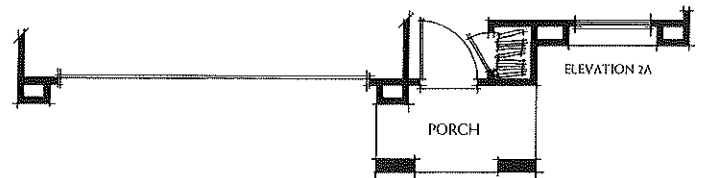




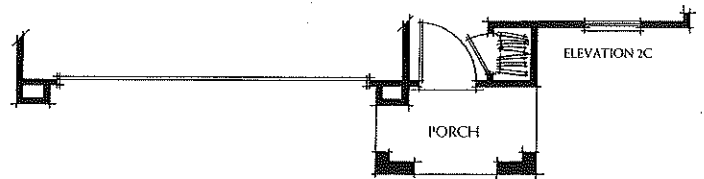
# 2nd Floor



ELEVATION 2B



ELEVATION 2A



ELEVATION 2C

1,725 square feet

3 bedrooms • 2½ baths

Formal living room • Formal dining room

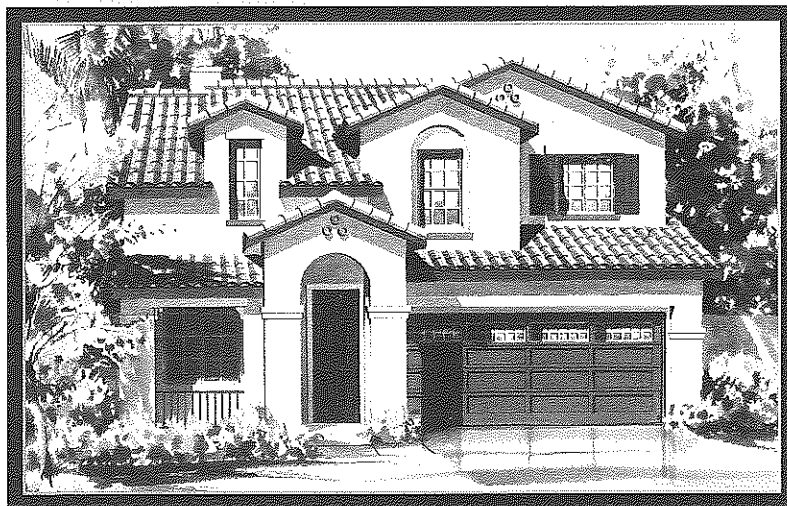
Family room • Gourmet kitchen with island

Breakfast nook • Attached 2-car garage

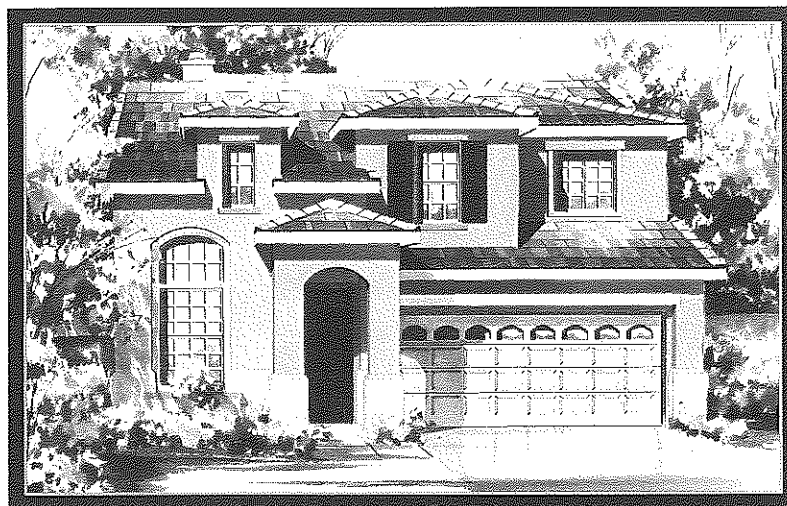
# 1st Floor

# Residence Three

3AR



3BR



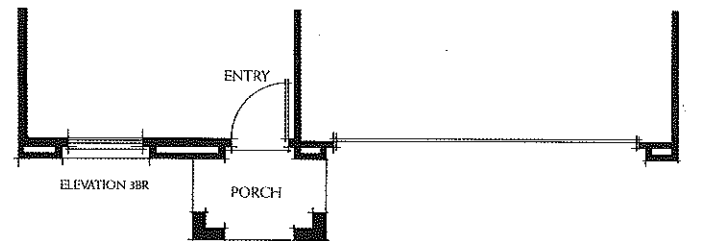
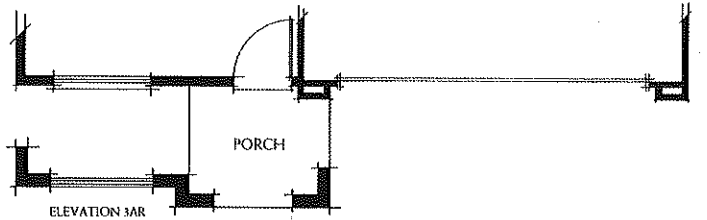
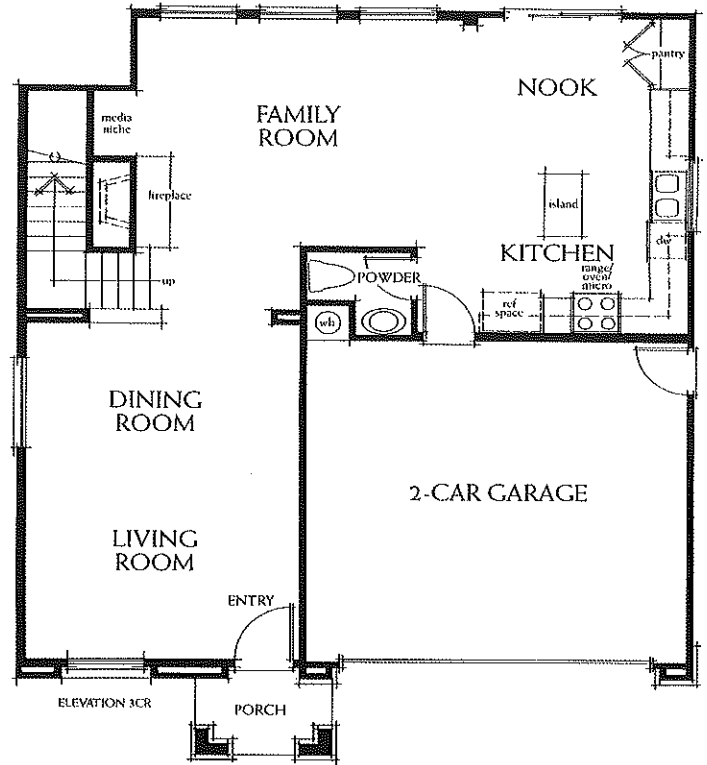
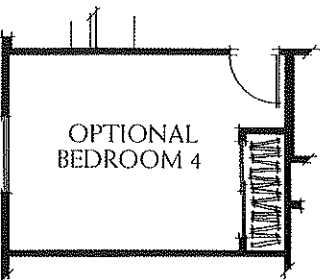
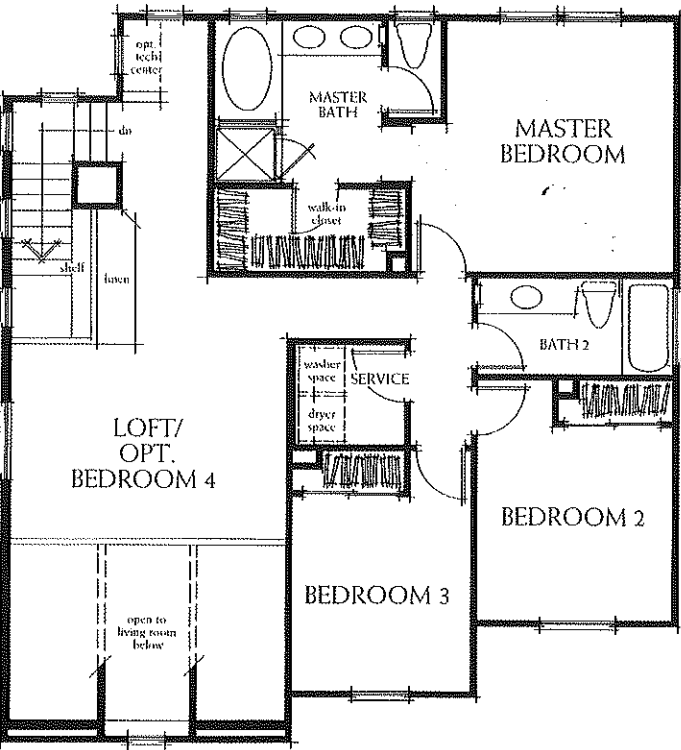
Model Elevation

3CR





# 2nd Floor



1,888 square feet

3 bedrooms • Loft • 2½ baths

Formal living room • Formal dining room • Family room

Gourmet kitchen with island • Breakfast nook

Optional bedroom 4 • Attached 2-car garage

# 1st Floor

# Elegant Features

## Distinguished Exteriors

- Private community pool and spa
- Spanish Traditional, Italian Country, and French Country architectural styles with designer-selected color palettes
- Stone masonry accents with shutters and wrought iron details (per plan)
- Fire-retardant, concrete tile roofs
- Raised-panel entry doors with polished-brass hardware
- Attached two-car garage with sectional, roll-up garage door
- Automatic garage door opener with two transmitters
- Designer garage door windows (per plan)
- Rear and side-yard wood and/or wrought iron fencing with a gate (per lot)
- Concrete driveways and walkways
- Weatherproof electrical outlet at front and rear of home
- Plumbed at rear yard for gas barbecue
- Front-yard landscaping with automatic irrigation systems

## Gracious Interiors

- Spacious family rooms with media niche
- Family room gas fireplace with ceramic tile surrounds
- Raised-panel Colonist® interior doors with polished-brass hardware
- Architecturally designed radius corners on outside walls
- Decora® light switches
- Architecturally designed, recessed lighting
- Interior laundry
- Wired with Category 5 high-speed data transmission wiring creating Local Area Networking (LAN) capabilities in kitchen, den, loft, and all bedrooms
- Pre-wired for cable television in family room, den, loft, and all bedrooms
- Cultured marble countertops in secondary bathrooms and laundries
- Polished-chrome fixtures in guest bathrooms
- Central air conditioning
- Gas, forced-air heating system with programmable, night set-back

## Gourmet Kitchens

- Hand-set, 6" x 6" ceramic tile countertops
- Convenient center islands (per plan)
- GE® appliance package including:
  - Five-cycle dishwasher
  - 30" standard clean oven
  - Microwave hood combination
- Custom oak cabinets featuring self-closing, semi-concealed hinges, white interiors, and adjustable shelving in the pantries
- Under-cabinet fluorescent lighting
- Deluxe, dual-compartment sinks
- White-on-chrome pull-out sprays
- Refrigerator area pre-plumbed for icemaker

## The Master Suites

- Hand-set, ceramic tile countertops
- Dual vanity areas with oversized mirrors
- Polished-chrome faucets with levers
- Clear-glass-enclosed showers with polished-chrome frames
- Oval soaking tubs
- Private water closets with elongated bowls
- Spacious walk-in closets

## Special Features and Energy-Savers

- Dual-glazed aluminum windows
- Post-tension foundation systems
- Gas laundry connections
- Energy-efficient hot water heaters
- Energy-efficient exterior door weather-stripping
- Energy-saving, fiberglass insulation in ceiling and walls

## Custom Design Options

- A full array of design opportunities and upgraded specifications are available to help you customize your Acacia II home to suit your every need. Please consult your Sales Representative for additional information.

In an effort to improve our product to meet consumer needs, Western Pacific Housing reserves the right to modify features, specifications, plans, and pricing without notice and/or obligation. All square footage is approximate. Not all features are available in all plans. Entry, ceiling, window, and wall configurations vary per plan and elevation. All renderings are artists' illustrations. See Sales Representatives for details.  
©2001 Western Pacific Housing, Inc.

# Western Pacific Housing. We Make It Happen.

Being the homebuilder you want us to be isn't easy. It takes hard work, dedication, and experience. But none of these things alone makes a builder great.

*It is caring.*

Caring about you, your future, your total satisfaction as a Western Pacific Housing homeowner. Everything we do, from testing faucets to location scouting, is because we care.

*It is knowledge.*

Our principals come together with countless years of experience, forming a hub of homebuilding excellence that now stretches the width and breadth of California.

*It is strength.*

We believe that if you stop pushing yourself to be better, you stop growing. We have earned a reputation throughout California for quality and unbeatable value for everyone from first-time buyers to luxury homeseekers — but we'll never rest on those accomplishments alone.

*It is teamwork.*

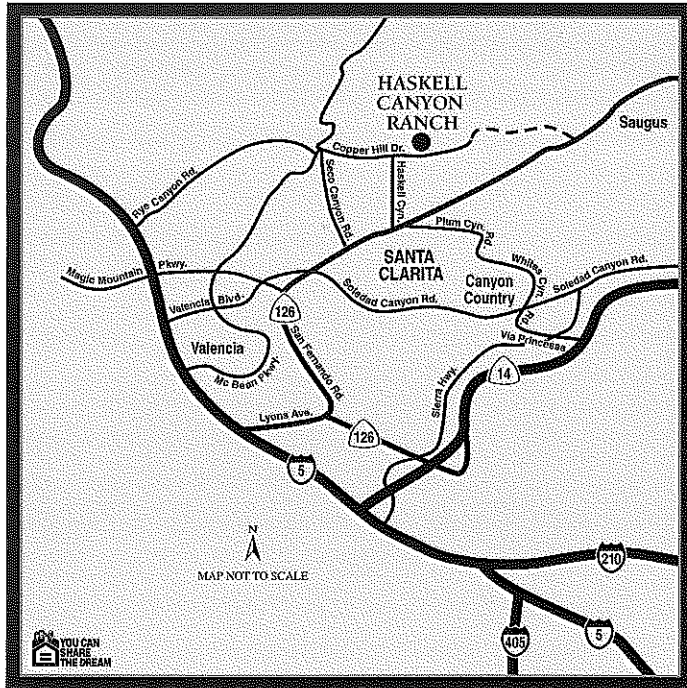
At Western Pacific, we don't just work for you, we work with you. You tell us what you want, and we really hear you. Our commitment to you is the backbone of our mission, and, we believe, the No. 1 indicator of our continued growth and success. Because your continued happiness is the truest measure of our success.

Western Pacific Housing. We make it happen.



(310) 665-3700

VISIT US ON THE WEB  
[westernpacifichousing.com](http://westernpacifichousing.com)



ACACIA II at Haskell Canyon Ranch  
28415 Silverking Trail, Santa Clarita, CA 91350

661.263.9289

VISIT US ON THE WEB  
[westernpacifichousing.com](http://westernpacifichousing.com)

